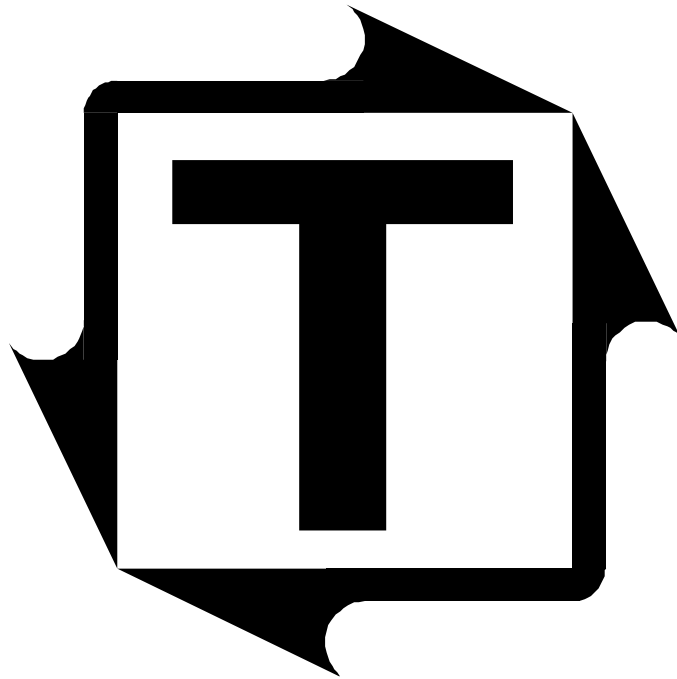


ZT-SLIM



Tonnage Load Monitor By Toledo Integrated Systems User's Manual



ZT-SLIM

User's Manual

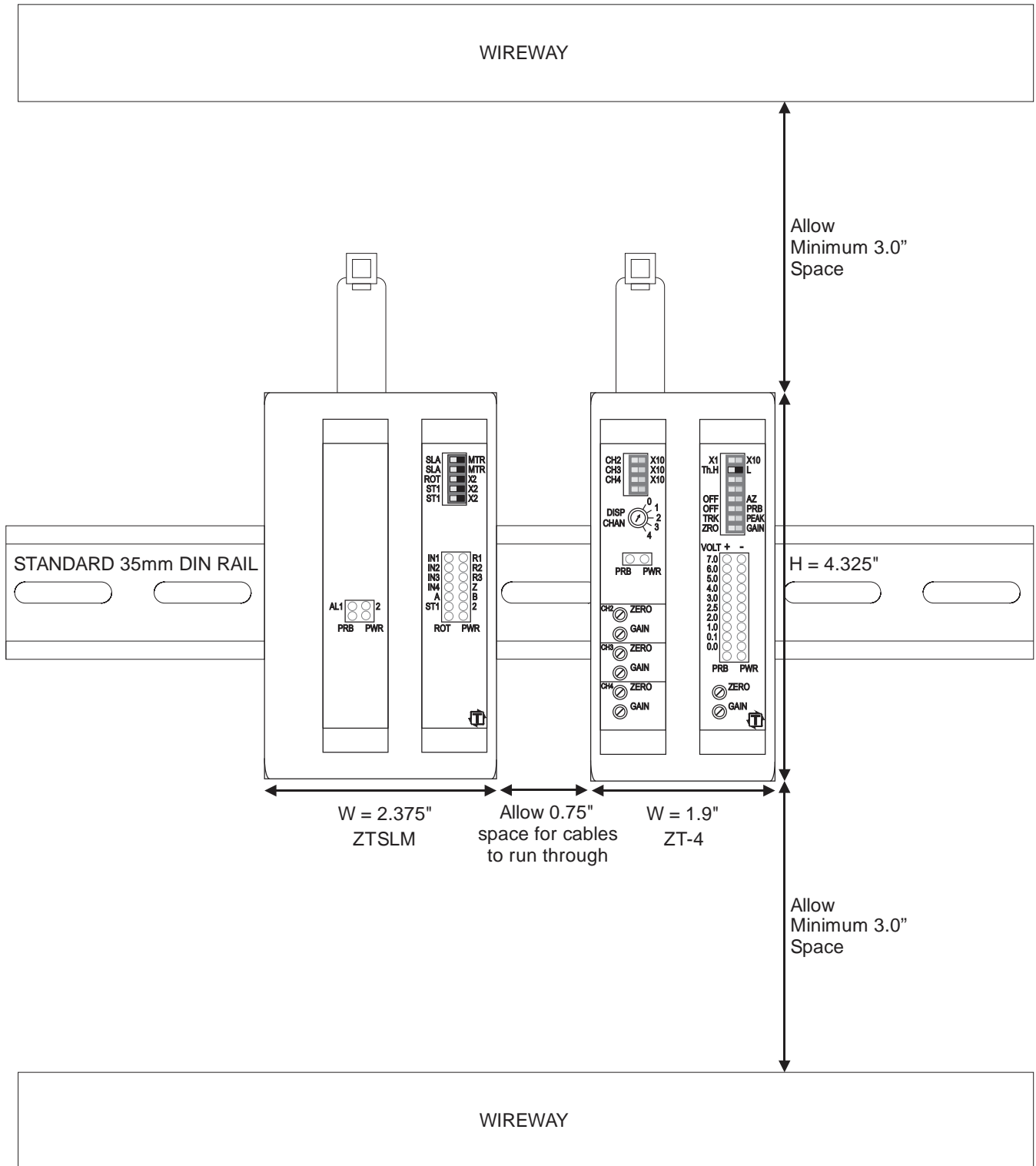
2-14-2019



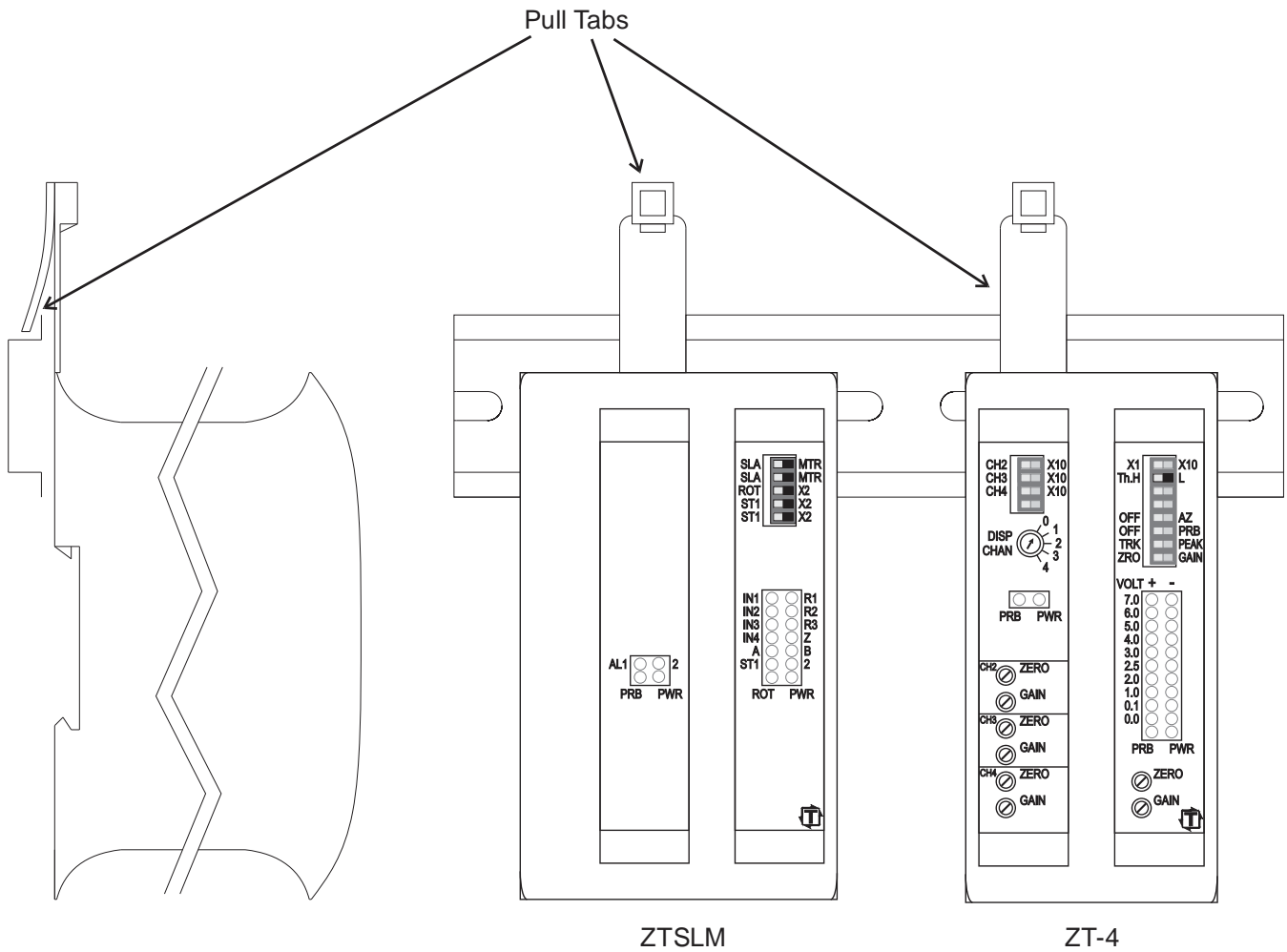
Scan to visit us
on the web

**THIS PAGE
INTENTIONALLY
LEFT BLANK**

1) Mounting the ZT-SLIM UNITS



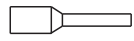
2) Working with the ZT-SLIM Units



The ZT-SLIM are compact units with a lot of connections on the top and bottom. Use the Pull Tabs to hang the units on the Din Rail as shown while you move the units around to make connections or measurements.

3) Wire Termination

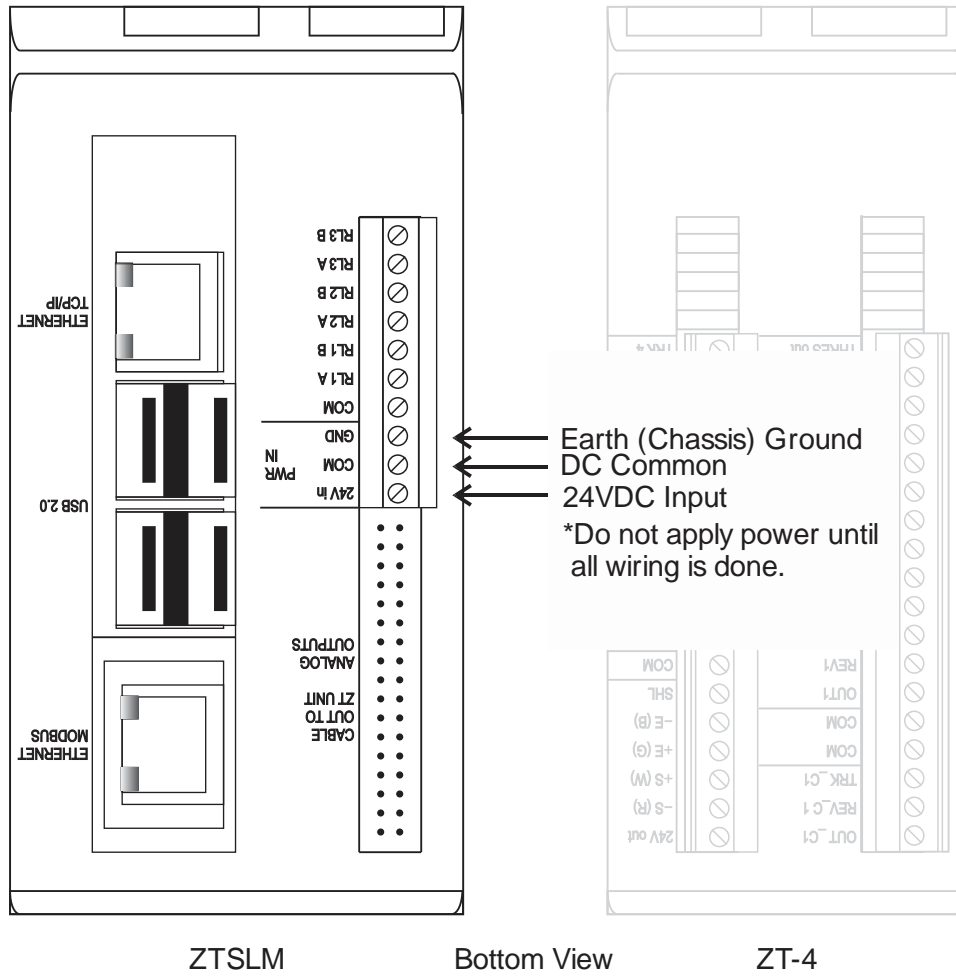
 14AWG Yellow

 22AWG White

 26AWG Grey

The ZT-SLIM package comes with wire ferrules of different sizes. Use them to terminate all wires. They provide strain relief which make the wires connect better.

4) DC Power Connection

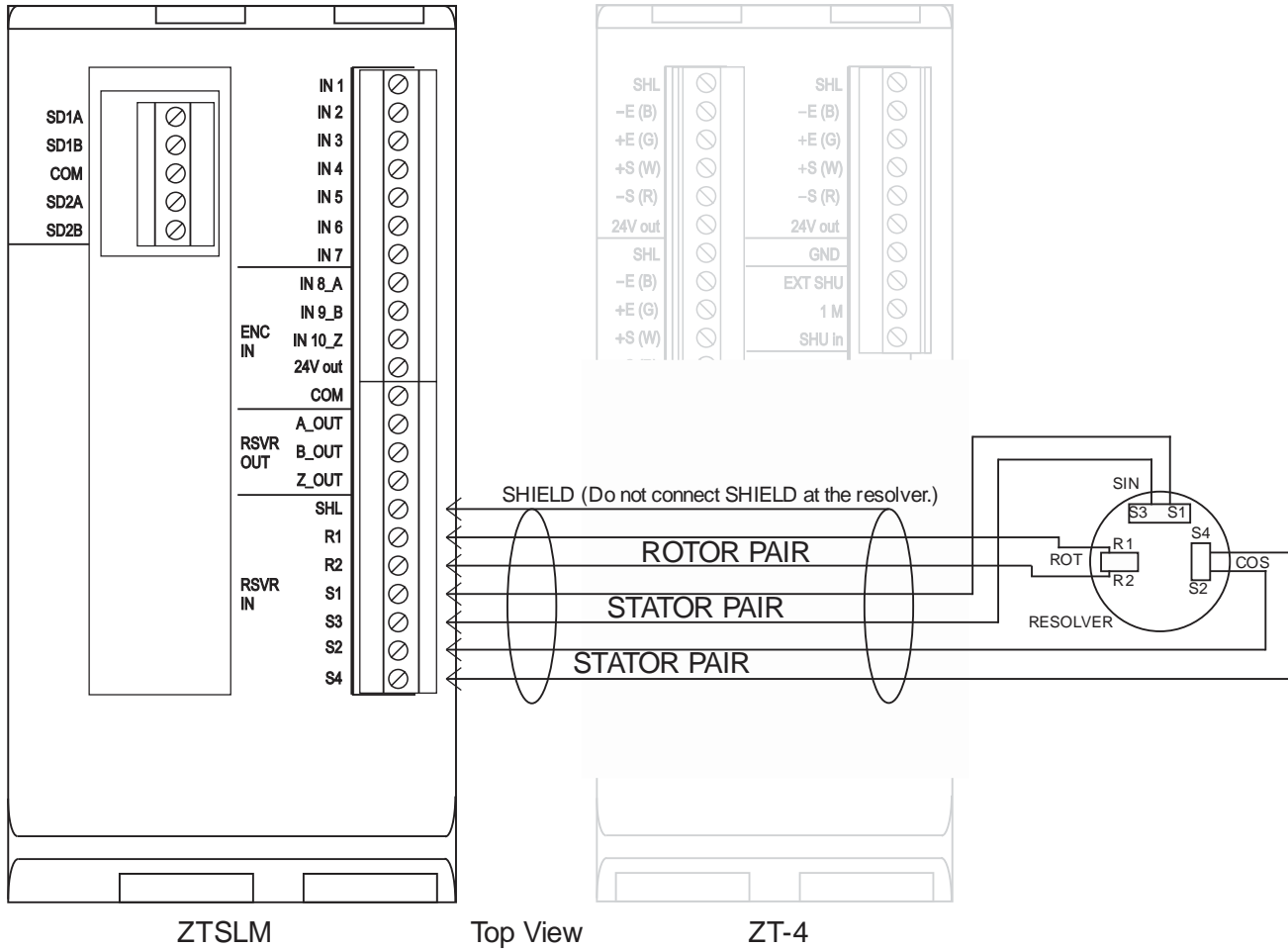


ZTSLM

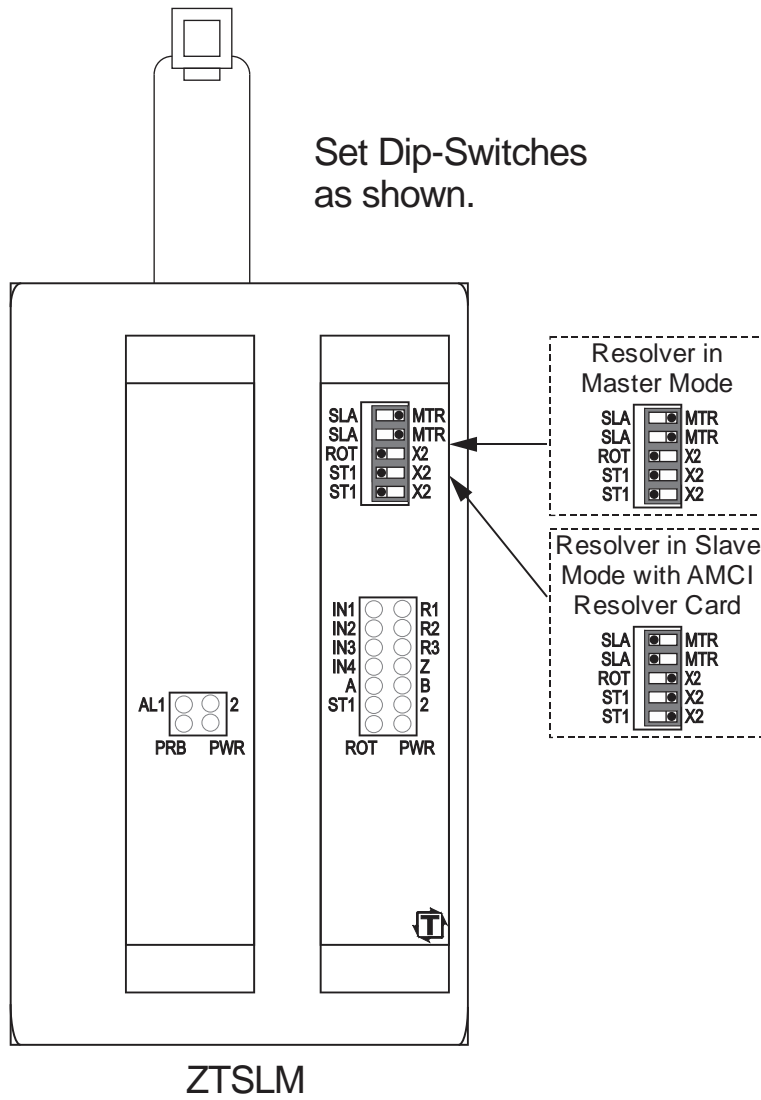
Bottom View

ZT-4

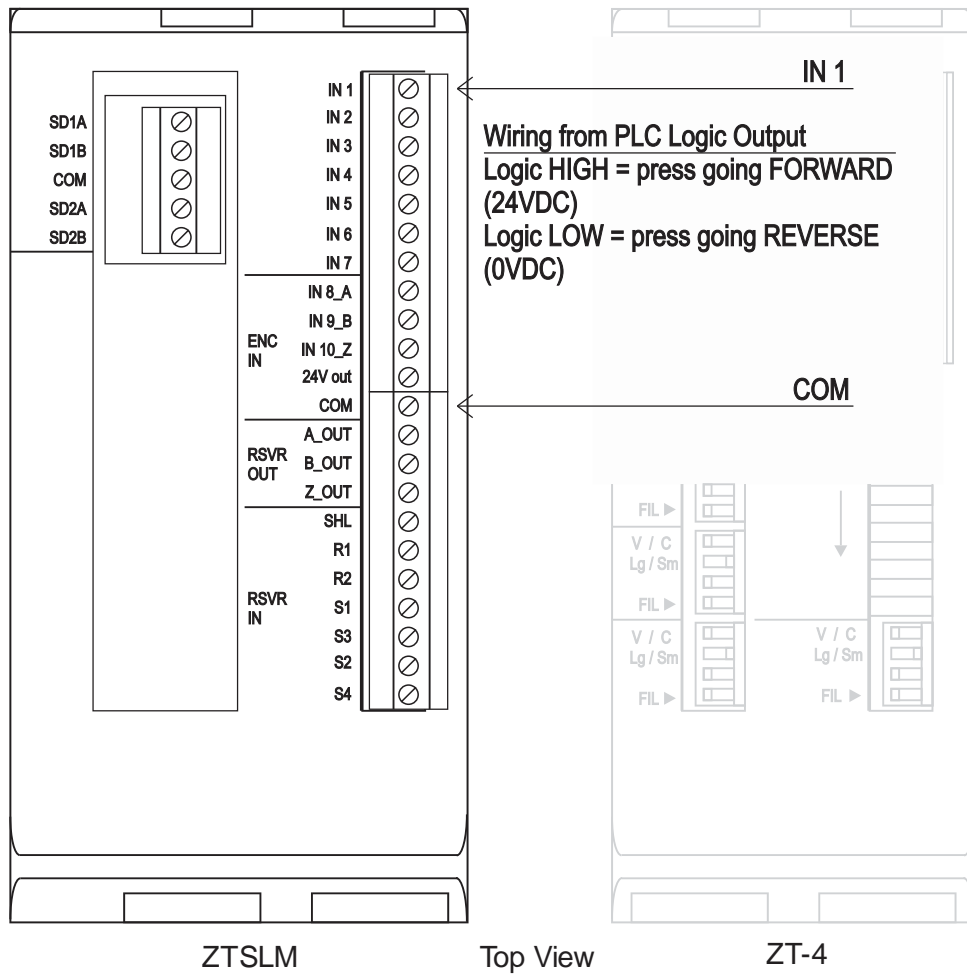
6) Resolver Connection



7) Resolver Dip Switch Settings

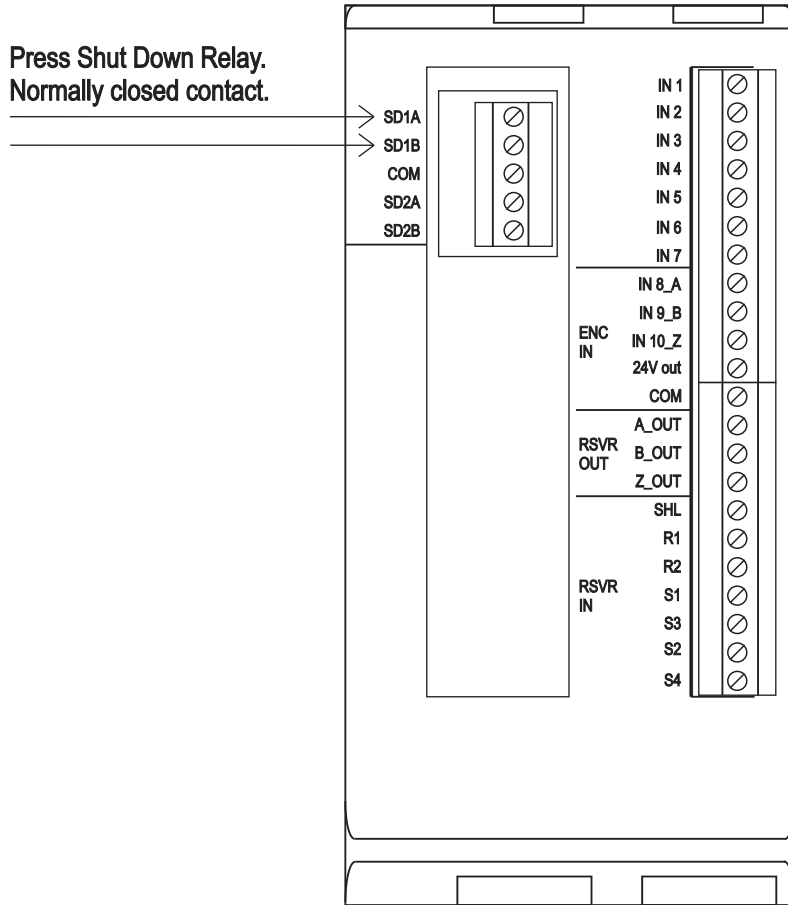


8) Servo Press Direction Signal



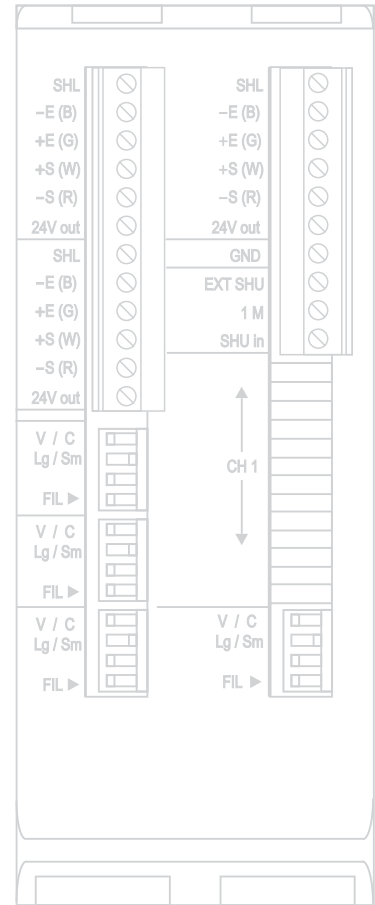
9) Shutdown Relay Connection

Press Shut Down Relay.
Normally closed contact.



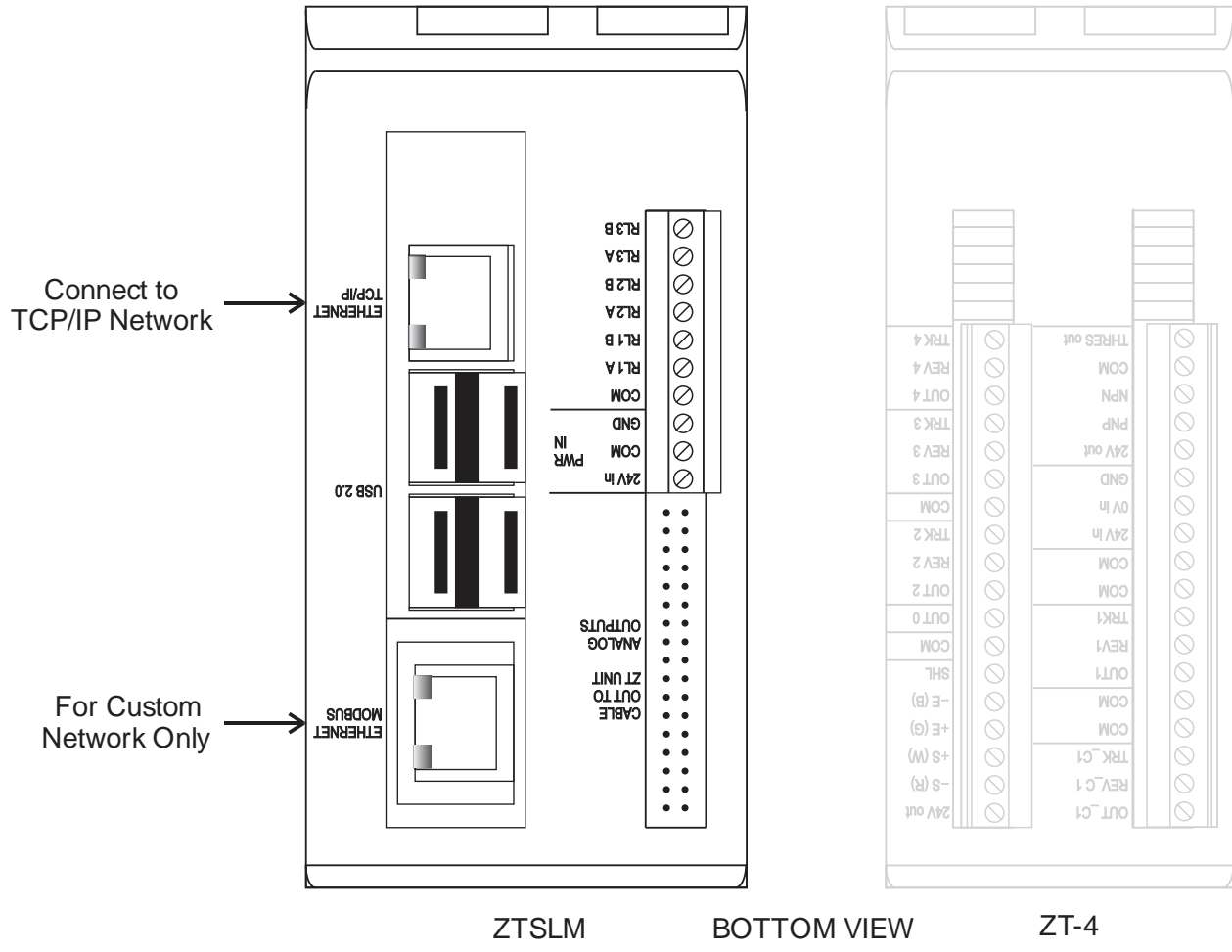
ZTSLM

TOP VIEW

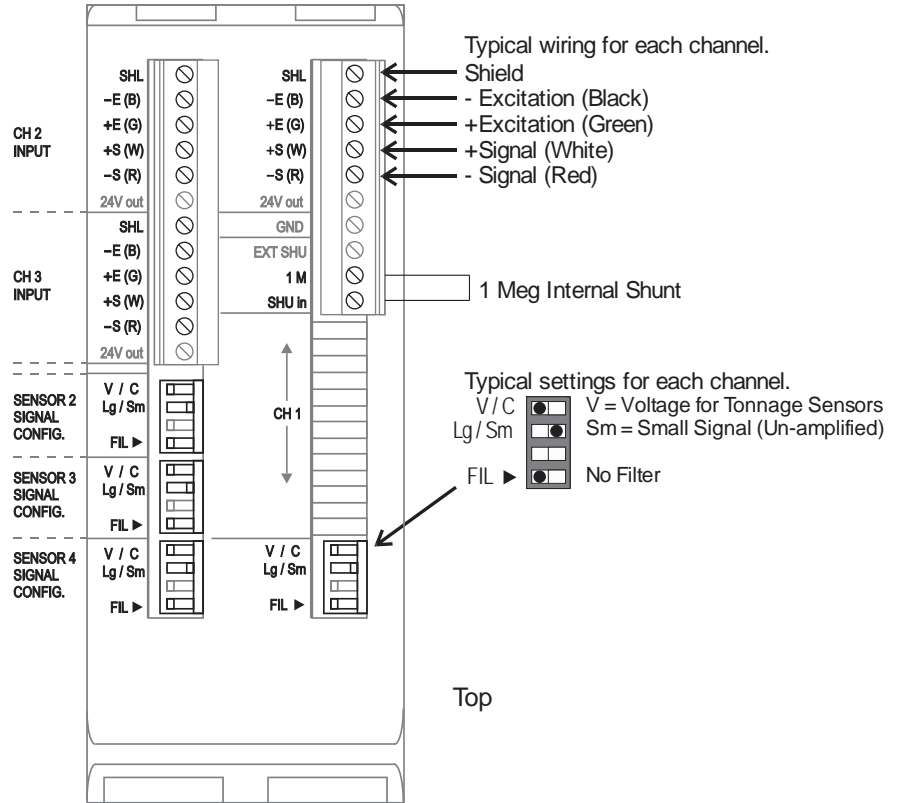
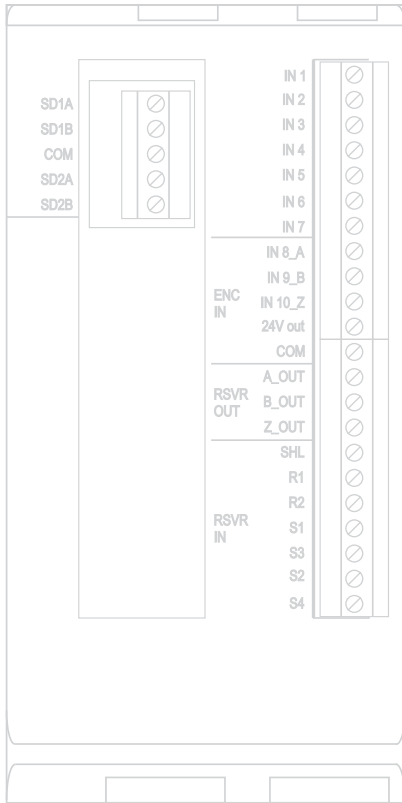


ZT-4

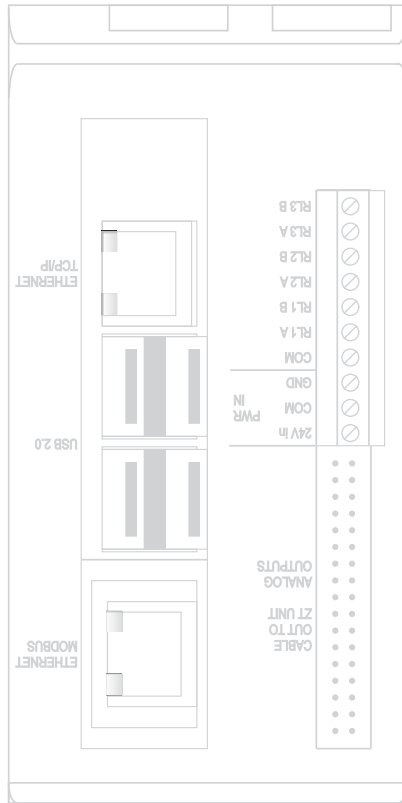
10) Network Connection



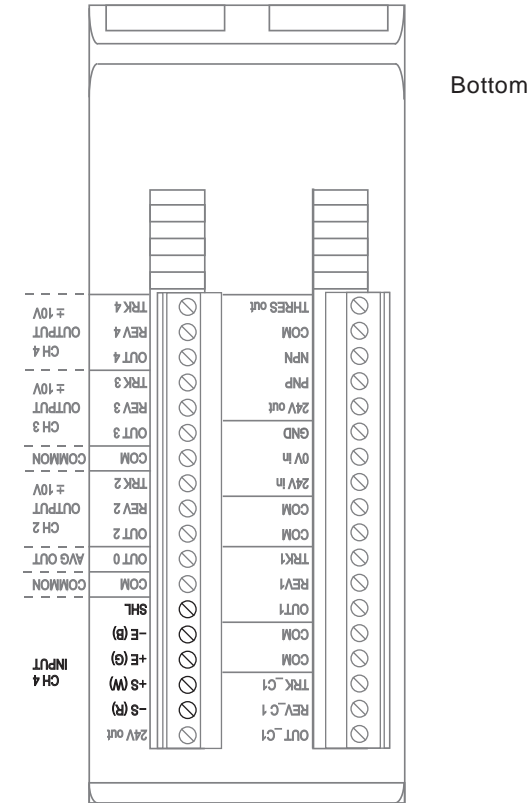
11) T400 Sensor Connections/Configurations



Top



ZTSLM

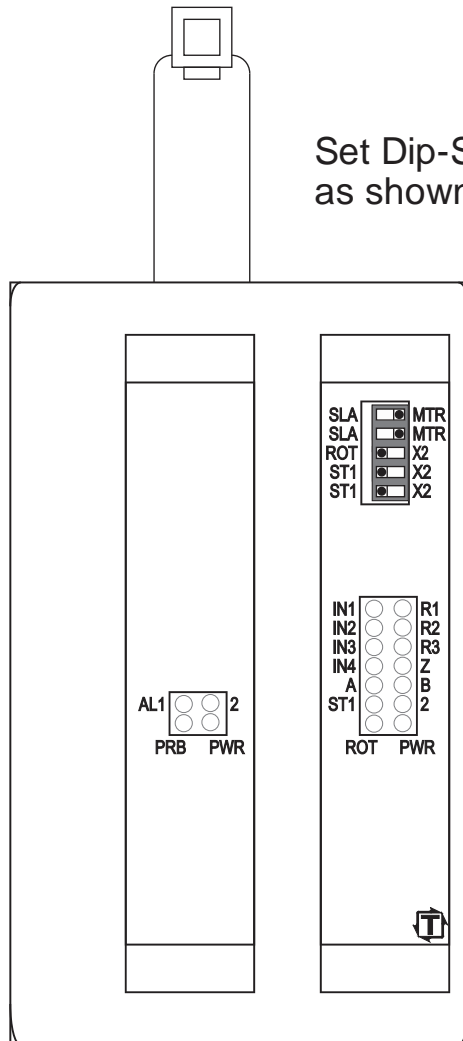


Bottom

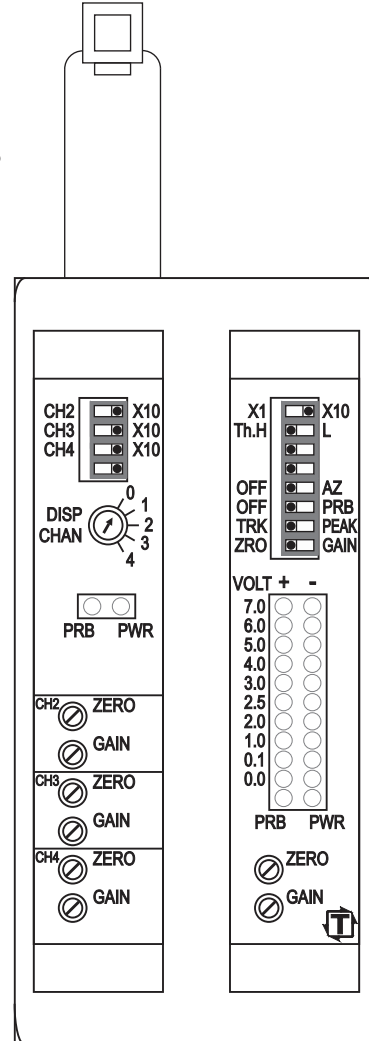
ZT-4

12) Typical Switch Settings

Set Dip-Switches as shown.



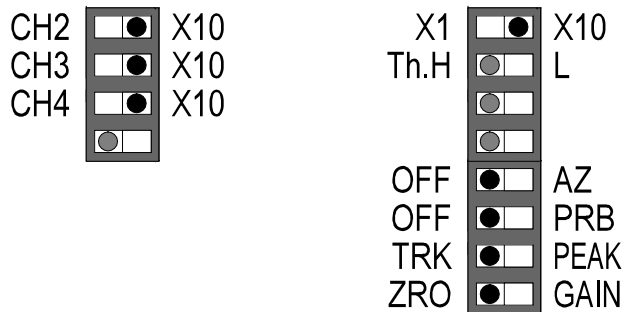
ZTSLM



ZT-4

13) Calibration Procedures

- 1) Before calibrating the unit, verify each piece of hardware is connected and set up properly.
- 2) With the sensors placed in the best possible location, (see appendix), torque the sensors down to 150 in-lbs on the sensor bolts. Do not put the sensor enclosure covers on yet. You will need to test each sensor location.
- 3) Find the shut height of the press.
 - Jog the press until the ram is at bottom dead center (BDC) or 180° without the load cells or die in the press.
 - Determine the amount of spacers needed with your load cell. Cycle the press without load cells to insure correct height.
- 4) Place the load cells in the correct position in the press.
 - All load cells should be equal distance from the sides and front and rear. For example, 12" from the sides, 10" from front and rear. Load cells are typically placed at each corner of the press's bed.
 - Cycle the press without hitting the load cells first.
 - Place cardboard on the top and bottom of the load cells.
- 5) Set ZT-4 dip-switches as shown. set all gain pots to fully clockwise, then dial each gain pot about 12 turns counter-clockwise to start.



6) Balance the tonnage sensors.

- Go to the Calibration page in SlimWare and select “Display Balance”.
- Adjust the ZERO pots until the Balance reads zero in each channel.

7) Cycle the press.

- Select “Capture Tonnage” in SlimWare.
- Further adjust the shut height so that the press impacts the load cells and generates a load at 100% of press capacity. See warning below.

WARNING

Depending on the press capacity and the size of the load cells being used, loading the press at capacity with load cells could indent the ram or bolster. If this is a concern, you may choose to calibrate the press only up to 80% of capacity.

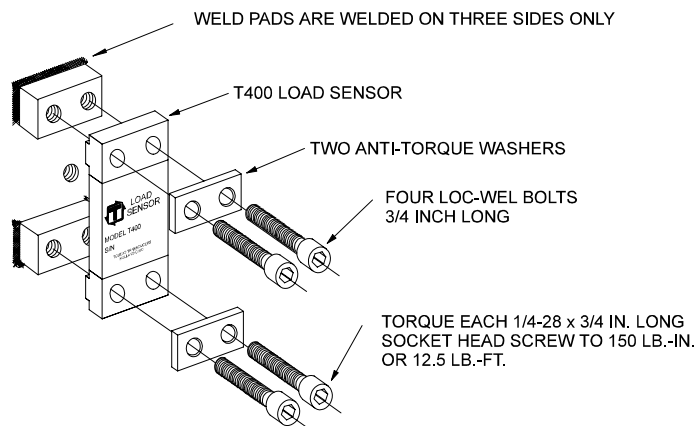
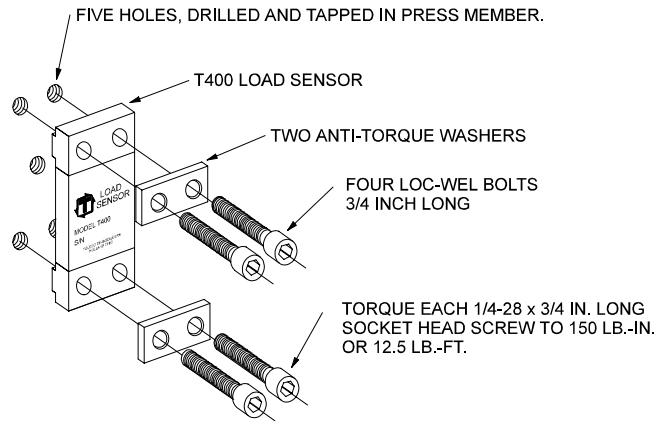
8) Adjust the gain.

- Run the press for 2 cycles at capacity.
- Compare the tonnage readings in SlimWare with the load cell readings.
- Adjust the GAIN pots.
- Repeat until the SlimWare readings match the load cell readings.
- If less gain is needed, change the Gain switch to X1.

Appendix

**THIS PAGE
INTENTIONALLY
LEFT BLANK**

INSTALLING T400 LOAD SENSORS



The above illustrations represent the proper arrangement of Model T400 Load Sensor kit parts using either the Drill and Tap method or the Weld method.

A proper installation is necessary to produce good results.

Before installing the sensors, please read the appropriate instructions listed below.

Sensor Placement	Page 2
Press Frame	Page 3
Pitman Mount	Page 4
Drill and Tap Method of Installing Sensors	Page 5
Weld Method of Installing Sensors	Page 6
T400 Enclosure Mounting Details	Page 7

NOTES:

- 1) (2) SENSORS REQUIRED
- 2) (2) SENSOR ENCLOSURES ARE INCLUDED. THESE HELP PROTECT THE T400 SENSOR GAUGES. THESE ENCLOSURES INCLUDE 1/2" KNOCK-OUT HOLES. IF CONDUIT IS USED, WE SUGGEST USING 1/2" STRAIN RELIEFS IN THE KNOCK-OUT HOLES.

SENSOR PLACEMENT

Sensor location must be determined. You have two locations. The front or the rear of the press. (Shown in the shaded area.)

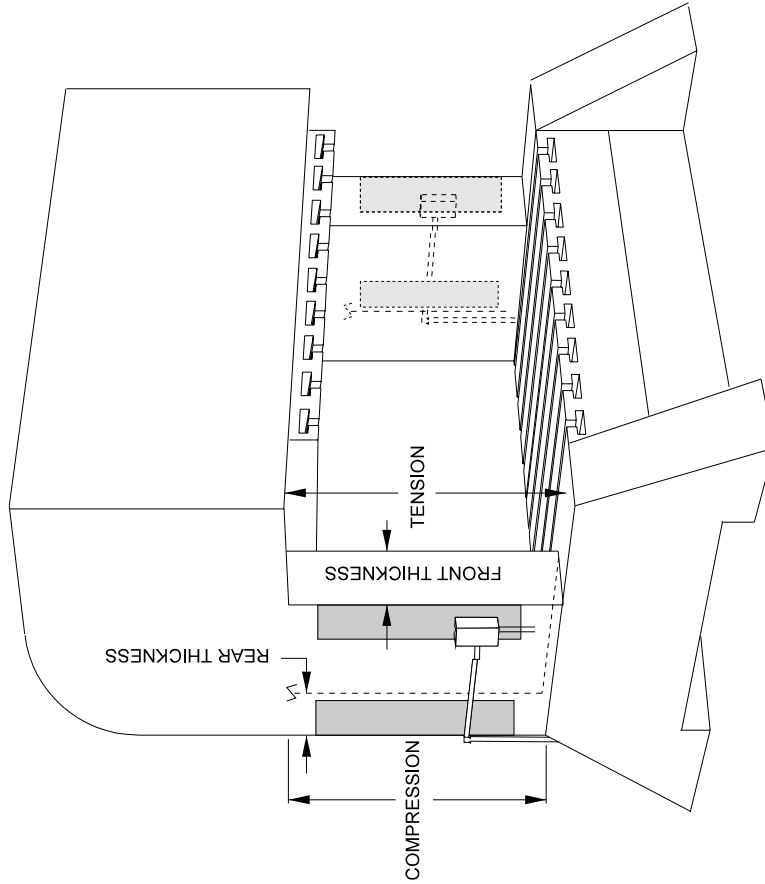
HOW TO DETERMINE THE BEST LOCATION

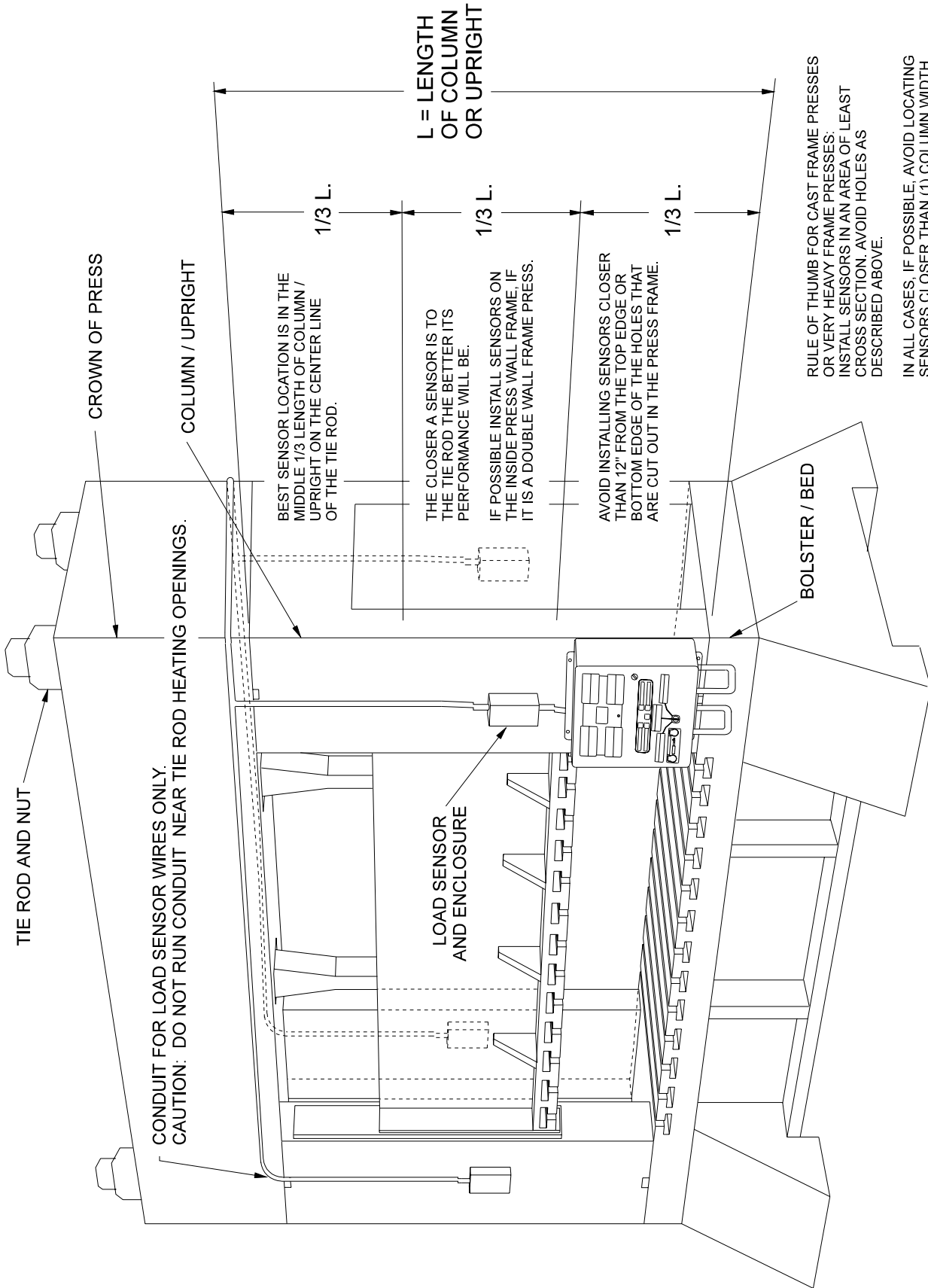
* MEASURE THE REAR THICKNESS _____ REAR

* MULTIPLY BY THREE X 3 =

* MEASURE THE FRONT THICKNESS _____ FRONT

If the front thickness is smaller than value in , then mount sensors in the front. (This is the most common.)
If the front thickness is larger, then place the sensor in the rear. Adjust the input connection for compression readings instead of tension.





CONDUIT FOR LOAD SENSOR WIRES ONLY.
CAUTION: DO NOT RUN CONDUIT NEAR TIE ROD HEATING OPENINGS.

BEST SENSOR LOCATION IS IN THE MIDDLE 1/3 LENGTH OF COLUMN / UPRIGHT ON THE CENTER LINE OF THE TIE ROD.

THE CLOSER A SENSOR IS TO THE TIE ROD THE BETTER ITS PERFORMANCE WILL BE.

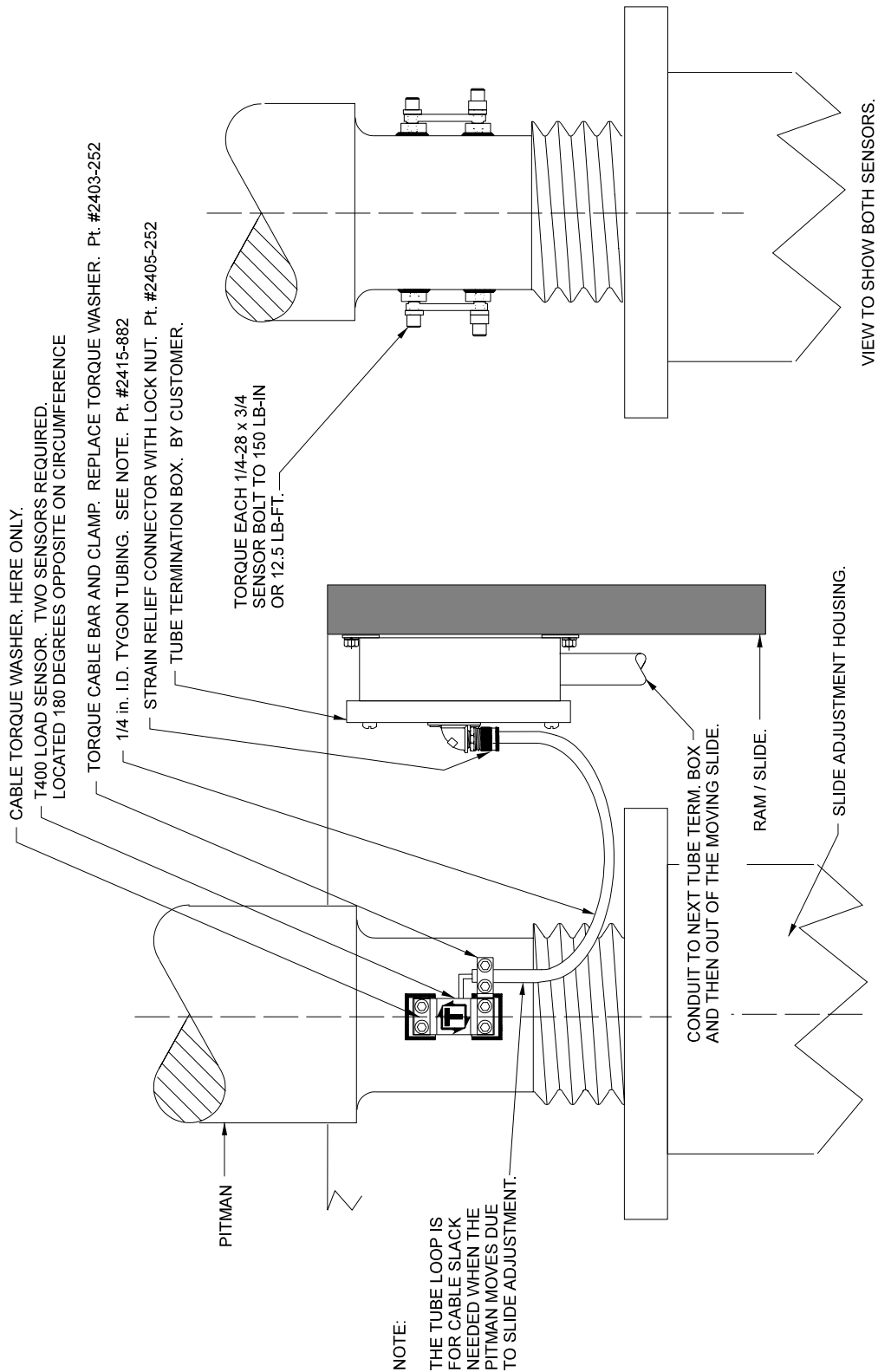
IF POSSIBLE INSTALL SENSORS ON THE INSIDE PRESS WALL FRAME, IF IT IS A DOUBLE WALL FRAME PRESS.

AVOID INSTALLING SENSORS CLOSER THAN 12" FROM THE TOP EDGE OR BOTTOM EDGE OF THE HOLES THAT ARE CUT OUT IN THE PRESS FRAME.

L = LENGTH OF COLUMN OR UPRIGHT

RULE OF THUMB FOR CAST FRAME PRESSES OR VERY HEAVY FRAME PRESSES:
INSTALL SENSORS IN AN AREA OF LEAST CROSS SECTION. AVOID HOLES AS DESCRIBED ABOVE.

IN ALL CASES, IF POSSIBLE, AVOID LOCATING SENSORS CLOSER THAN (1) COLUMN WIDTH FROM THE CROWN OR BOLSTER.

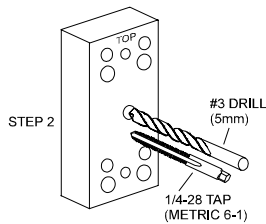


USING THE T400 SENSOR INSTALLATION FIXTURE KIT No. 1977-749

(METRIC INSTALLATION FIXTURE KIT No. 1974-749)

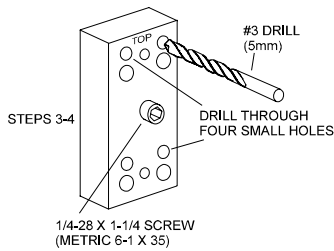
DRILL AND TAP METHOD FOR MOUNTING SENSORS

BE SURE THE SENSOR LOCATION FOLLOWS THE BEST LOCATION DESCRIBED ON THE PREVIOUS PAGES.



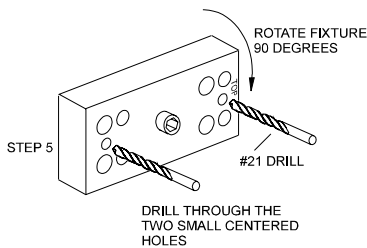
STEP 1 Remove all paint and grease from sensor mount area. If the machine surface is flat (total indicated reading of .002”) and smooth (125 μ in.) the load sensor can be bolted directly to the surface.

STEP 2 Drill and tap the center hole for mounting the fixture to the press member. This hole should be ½ inch (13mm) deep.

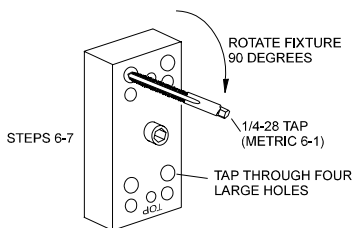


STEP 3 Bolt the fixture to the press member using the ¼-28 by 1-¼ inch (M6-1 x 35) long socket head cap screw in the center of the fixture.

STEP 4 Insert the number 3 drill (5mm) into the smaller corner hole and drill out all four holes to a depth of ¾ of an inch (19mm.)



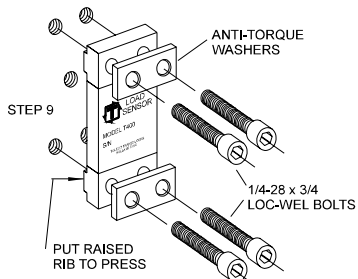
STEP 5 Loosen the fixture. Rotate the fixture 90 degrees clockwise. Tighten the center screw of the fixture. Insert the number 21 drill into the small centered hole and drill out both holes to a depth of 3/8 of an inch. These holes are for mounting the sensor enclosure. The fixture does not allow for tapping these holes. They are tapped without the fixture. Enclosure mounting is not done in metric.



STEP 6 Loosen the fixture. Rotate the fixture another 90 degrees clockwise such that the larger corner holes line up with the holes drilled in Step 4. Insert a tap to be sure the holes line up. Lock the fixture in place by tightening the center screw.

STEP 7 Insert the tap into the larger tap guide holes and tap each hole.

BE SURE TO USE PLENTY OF TAPPING FLUID.



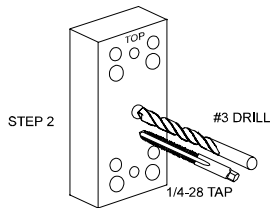
STEP 8 Remove the fixture and repeat Steps 1-7 for each additional sensor mounting position.

STEP 9 Mount the sensor with the raised rib to the press. The anti-torque washers should go between the screw and the sensor body. Torque each ¼-28 x ¾ in. long socket head cap screw to 150 LB.-IN or 12.5 LB.-FT.

USING THE T400 SENSOR INSTALLATION FIXTURE KIT No. 1977-749

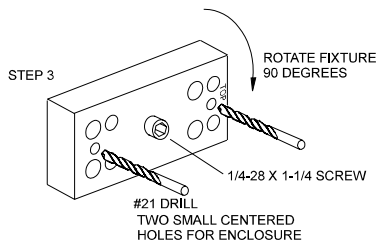
WELD PAD METHOD FOR MOUNTING SENSORS

BE SURE THE SENSOR LOCATION FOLLOWS THE BEST LOCATION DESCRIBED ON THE PREVIOUS PAGES.

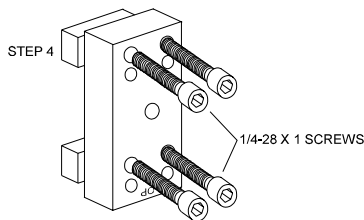


STEP 1 Remove all paint, grease, and or rust from surface to be welded. (Surface should be flat T.I.R. 1/32 of an inch.)

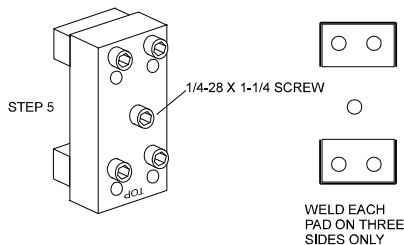
STEP 2 Drill and tap the center hole for mounting the fixture to the press member. This hole should be 1/2 inch deep. (Optional)



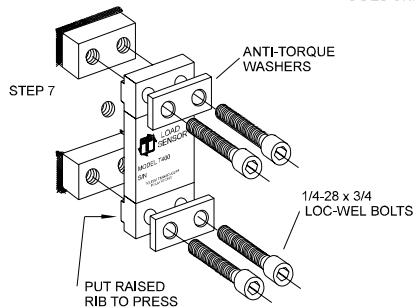
STEP 3 Bolt the fixture to the press member using the 1/4-28 by 1-1/4 inch long socket head cap screw in the center of the fixture. Orient the fixture as shown and drill out the #21 holes to a depth of 3/8 of an inch for the enclosure mounting. The fixture is not used for tapping these holes. (Optional)



STEP 4 Remove the fixture from the press member. Bolt the weld pads to the fixture with 1/4-28 by 1 inch long socket head cap screws provided. Reattach the fixture with the weld pads bolted on using the center hole as in Step 3. Orient the fixture as shown.



STEP 5 Weld the weld pads to the press member. (BE SURE TO ONLY WELD THE WELD PADS ON THREE SIDES AS SHOWN.) A single pass is sufficient. Do not remove the fixture until slag is removed and or assembly has cooled. When welding cast iron, use a dry nickel rod such as: Lincoln Electric "Soft Weld", Hobart "NI Cast 99", or MB Weld Prod. "MG 210. Strike arc on steel then puddle into the cast iron.



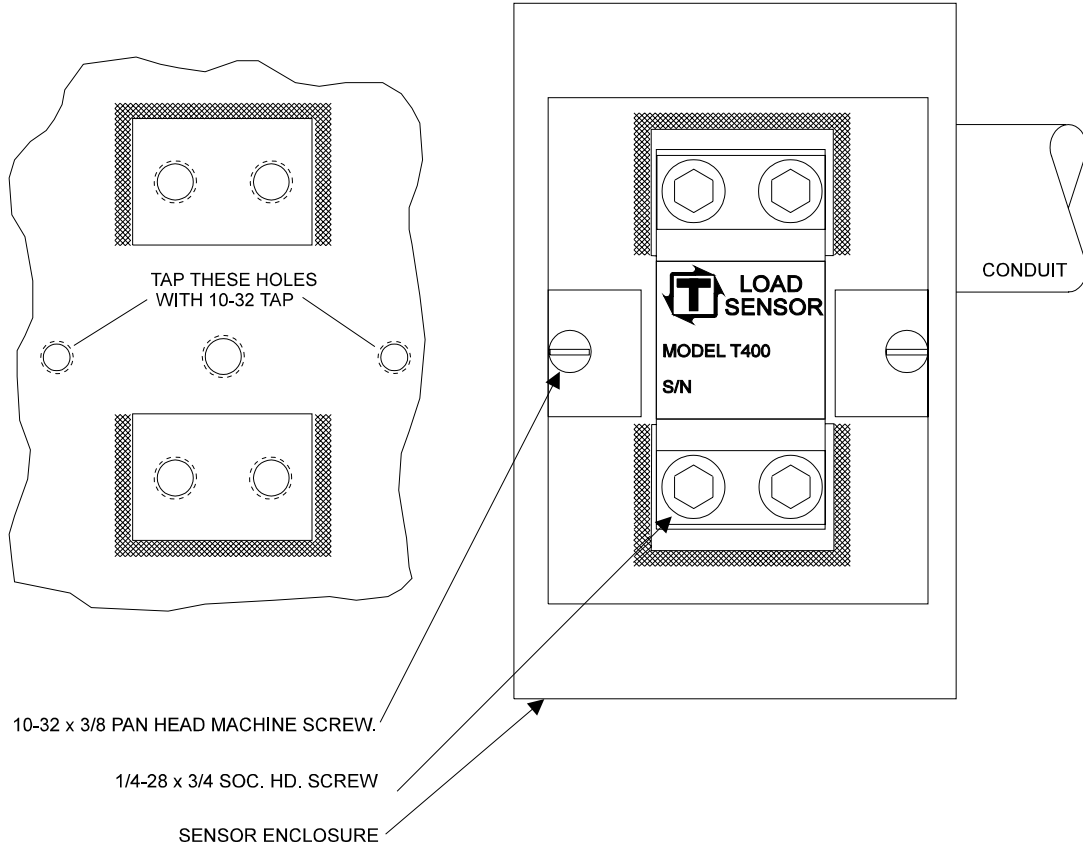
STEP 6 Remove the weld fixture. DO NOT WELD AFTER FIXTURE IS REMOVED. The 4 screws holding the pads to the fixture and the 1 center screw may be discarded. DO NOT USE THE FOUR 1 INCH LONG SCREWS TO ASSEMBLE SENSOR. The sensor kit contains four 3/4 inch long screws for assembling the sensor to the press member. Weld pad surface must be clean – no weld bumps, scratches, etc. Be sure the weld pad tapped holes are clean and bottom of holes are free of weld flash.

STEP 7 Mount the sensor with the raised rib to the press. The anti-torque washers should go between the screw and the sensor body. Torque each 1/4-28 x 3/4 in. long socket head screw to 150 LB.-IN or 12.5 LB.-FT.

SENSOR ENCLOSURE MOUNTING

USE 10-32 TAP IN THE TWO 3/8" DEEP HOLES THAT WERE DRILLED WITH THE FIXTURE IN THE PREVIOUS INSTRUCTIONS. MOUNT THE ENCLOSURE TO THE PRESS MEMBER AND RUN 1/2" INCH CONDUIT TO THE LOAD MONITOR ENCLOSURE.

RUN SENSOR CABLE THROUGH CONDUIT. PLACE SENSOR ON MOUNTING HOLES. PLACE ANTI-TORQUE WASHERS OVER SENSOR HOLES. SCREW IN SENSORS BOLTS, (4) EACH, FINGER TIGHT. USE ONLY THE 1/4-28 x 3/4" "LOC-WEL" BOLTS THAT ARE IN THE SENSOR PACKAGE. TORQUE EACH 1/4-28 x 3/4" SCREW TO 150 LB.-IN. OR 12.5 LB.-FT. ASSEMBLE BOX COVER.



COMPANY: _____

DATE: _____

PRESS SERIAL No: _____

PRESS (Type and & No.): _____

CONTACT: _____

PRESS CAPACITY: _____

PHONE: (____) _____

LOAD MONITOR MODEL: _____

SERVICE ORDER #: _____

MONITOR SERIAL No. _____

SLIDE-ADJUST INDICATOR

TONNAGE APPLIED TO **LOAD CELLS** ON PRESS

TONNAGE DISPLAYED ON **LOAD MONITOR**

LR	<input type="text"/>	TOTAL	<input type="text"/>	RR
LF	<input type="text"/>	<input type="text"/>	<input type="text"/>	RF

LR	<input type="text"/>	TOTAL	<input type="text"/>	RR
LF	<input type="text"/>	<input type="text"/>	<input type="text"/>	RF

LR	<input type="text"/>	TOTAL	<input type="text"/>	RR
LF	<input type="text"/>	<input type="text"/>	<input type="text"/>	RF

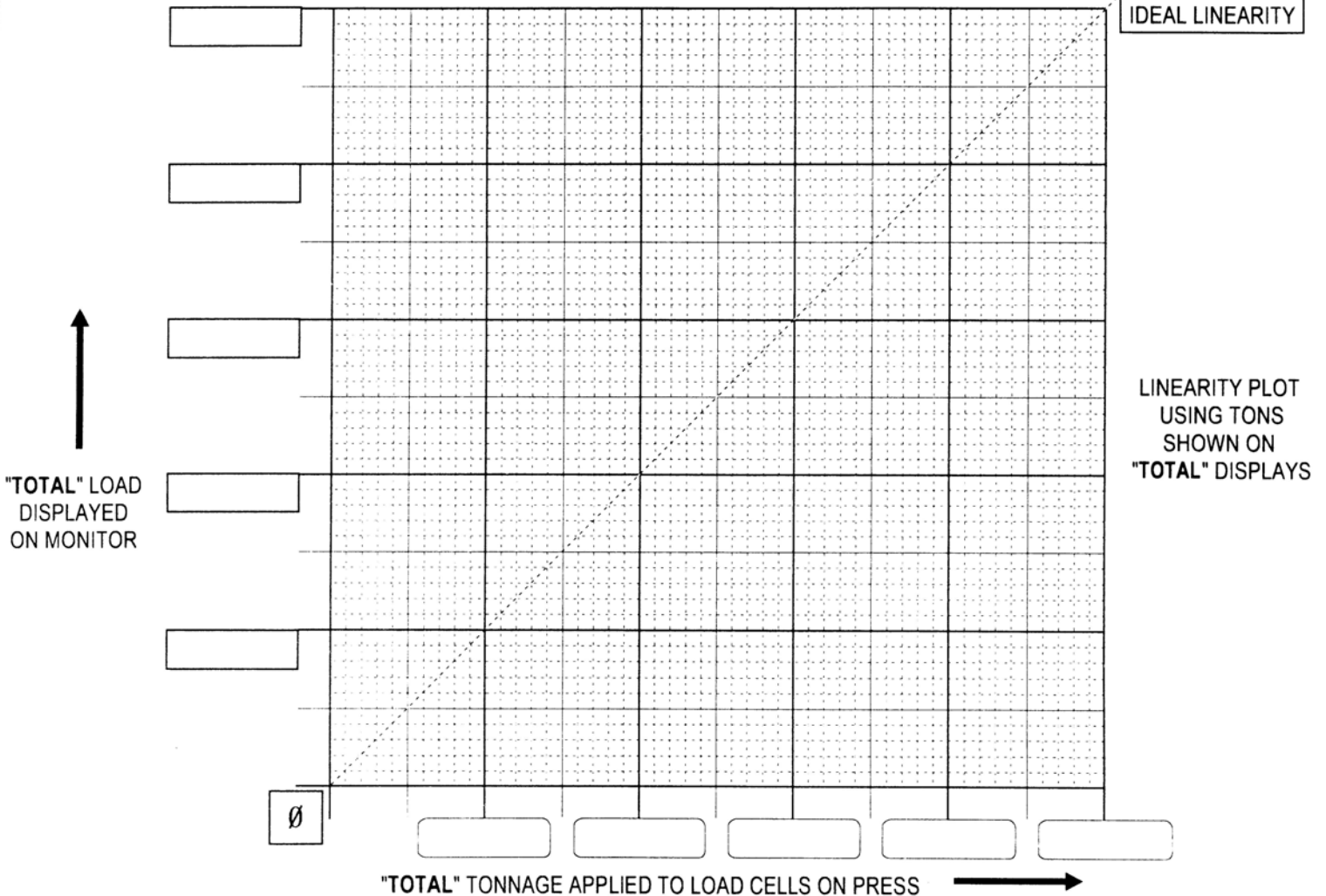
LR	<input type="text"/>	TOTAL	<input type="text"/>	RR
LF	<input type="text"/>	<input type="text"/>	<input type="text"/>	RF

LR	<input type="text"/>	TOTAL	<input type="text"/>	RR
LF	<input type="text"/>	<input type="text"/>	<input type="text"/>	RF

LR	<input type="text"/>	TOTAL	<input type="text"/>	RR
LF	<input type="text"/>	<input type="text"/>	<input type="text"/>	RF

LR	<input type="text"/>	TOTAL	<input type="text"/>	RR
LF	<input type="text"/>	<input type="text"/>	<input type="text"/>	RF

LR	<input type="text"/>	TOTAL	<input type="text"/>	RR
LF	<input type="text"/>	<input type="text"/>	<input type="text"/>	RF



- DRAW IN :** _____
- CHANNEL NUMBER
 - SENSOR LOCATION
 - MONITOR LOCATION
 - LOAD CELL LOCATION
 - DIRECTION OF MATL. FLOW

SHUNT RESISTORS:
ONE MEG ? YES ___ NO ___

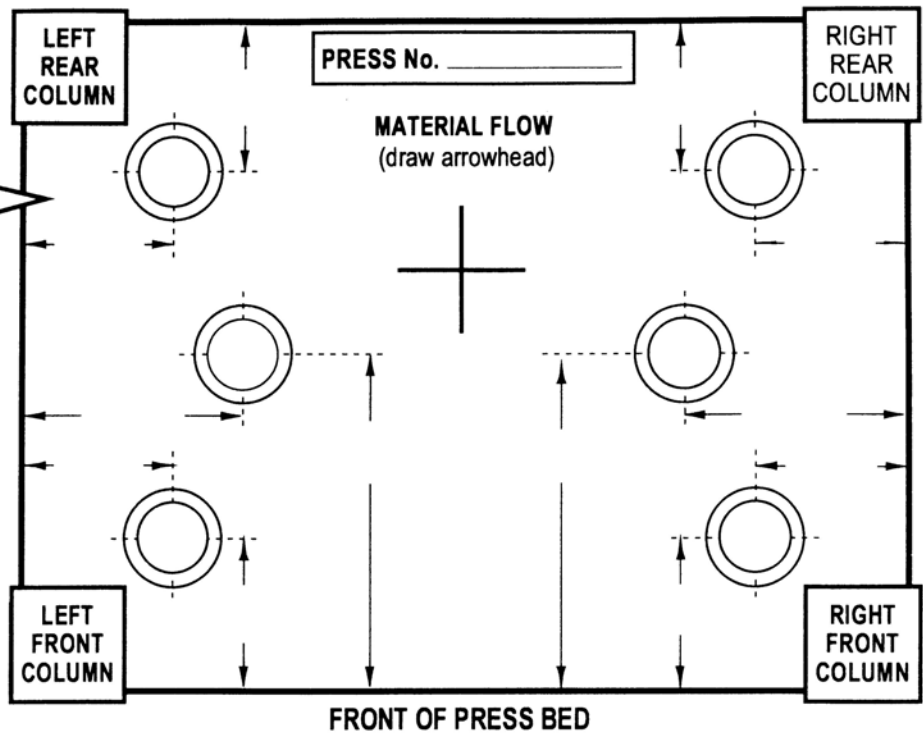
OTHER RESISTORS:

CHAN. 1 _____

CHAN. 2 _____

CHAN. 3 _____

CHAN. 4 _____



TYPE OF LOAD CELLS: _____ TYPE OF LOAD CELL READOUT: _____

TONNAGE SENSORS

CALIBRATION LOAD CELLS

SENSOR NUMBER	SERIAL NO.	CAL. NO.	X 10	LOCATION (LF, RF, LR, RR)
1				
2				
3				
4				

CELL NUMBER	CAPACITY TONS	SERIAL NO.	CAL. NO.
1			
2			
3			
4			

CCM TYPE: _____ CCM OFFSET: _____ STI REFERENCE NUMBER: LOW: _____ HIGH: _____

STI DEGREES IN CHANNEL No. 1: _____

TRIGGERED FROM PROBE ? YES ___ NO ___ (Show threshold value if not triggered from probe): _____

TRIPPED ALARM RELAY STOPS PRESS ? YES ___ NO ___ EXPLAIN: _____

ALL STICKERS AND DOCUMENTS FILLED OUT ? YES ___ NO ___ IF NOT, EXPLAIN WHY: _____

TFP No.: HIGH 2 _____ LOW 2 _____ HIGH 4 _____ LOW 4 _____ HIGH 6 _____ LOW 6 _____ HIGH 8 _____ LOW 8 _____

COMMENTS: _____

TESTS MADE BY: _____ TESTS ACCEPTED BY: _____ DATE: _____

MAIL ADDRESS:
TOLEDO TRANSDUCERS, INC.
P.O. BOX 10
HOLLAND, OHIO 43528

SHIPPING ADDRESS:
TOLEDO TRANSDUCERS, INC.
6834 SPRING VALLEY DR.
HOLLAND, OHIO 43528

PHONE: 1 (419) 867-4170
FAX: 1 (419) 867-4180

COMPANY: _____

DATE: _____

PRESS SERIAL No: _____

PRESS (Type and & No.): _____

CONTACT: _____

PRESS CAPACITY: _____

PHONE: (____) _____

LOAD MONITOR MODEL: _____

SERVICE ORDER #: _____

MONITOR SERIAL No. _____

SLIDE-ADJUST
INDICATOR

TONNAGE APPLIED TO **LOAD CELLS** ON PRESS

TONNAGE DISPLAYED ON **LOAD MONITOR**

LR	<input type="text"/>	TOTAL	<input type="text"/>	RR
LF	<input type="text"/>	<input type="text"/>	<input type="text"/>	RF

LR	<input type="text"/>	TOTAL	<input type="text"/>	RR
LF	<input type="text"/>	<input type="text"/>	<input type="text"/>	RF

LR	<input type="text"/>	TOTAL	<input type="text"/>	RR
LF	<input type="text"/>	<input type="text"/>	<input type="text"/>	RF

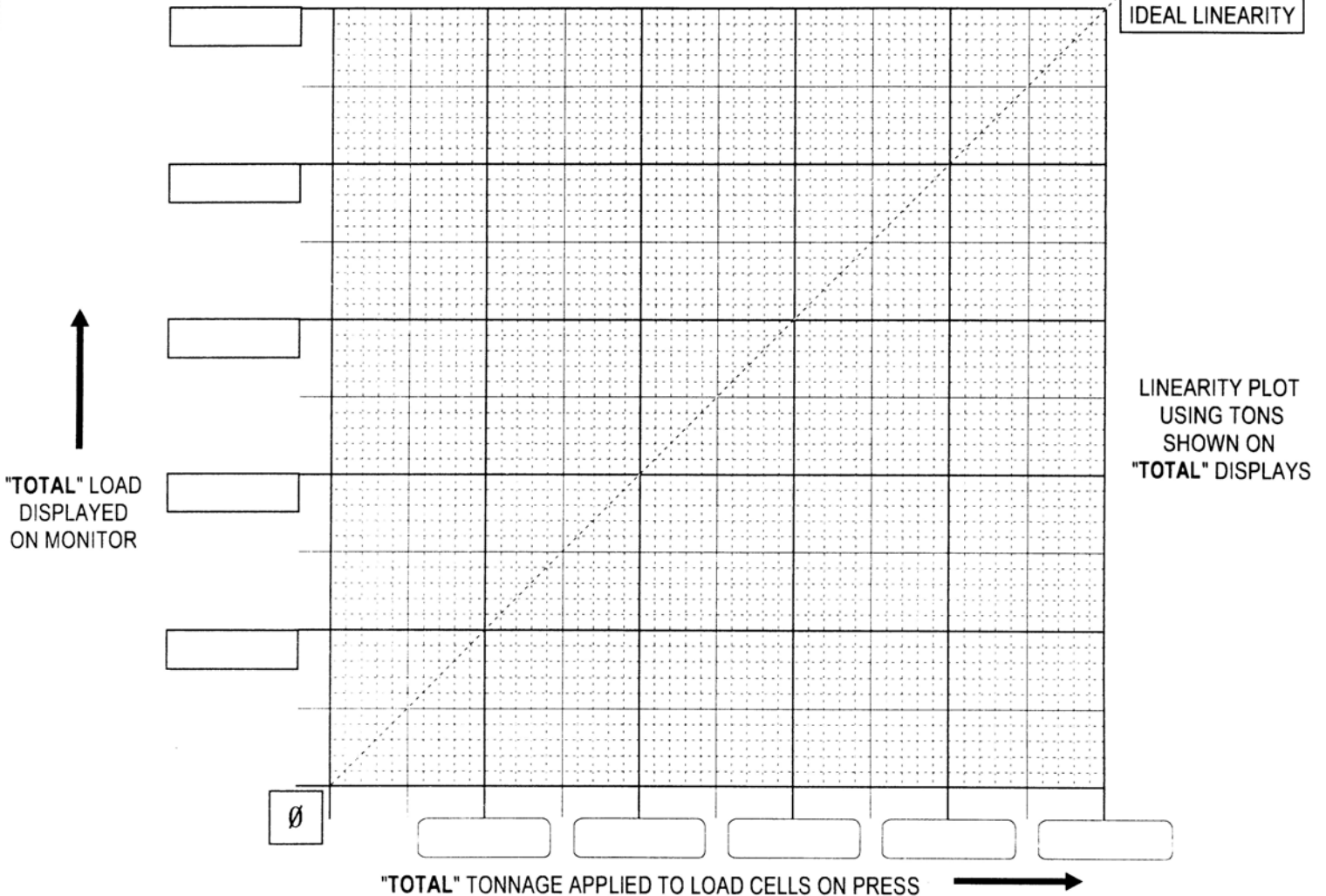
LR	<input type="text"/>	TOTAL	<input type="text"/>	RR
LF	<input type="text"/>	<input type="text"/>	<input type="text"/>	RF

LR	<input type="text"/>	TOTAL	<input type="text"/>	RR
LF	<input type="text"/>	<input type="text"/>	<input type="text"/>	RF

LR	<input type="text"/>	TOTAL	<input type="text"/>	RR
LF	<input type="text"/>	<input type="text"/>	<input type="text"/>	RF

LR	<input type="text"/>	TOTAL	<input type="text"/>	RR
LF	<input type="text"/>	<input type="text"/>	<input type="text"/>	RF

LR	<input type="text"/>	TOTAL	<input type="text"/>	RR
LF	<input type="text"/>	<input type="text"/>	<input type="text"/>	RF



IDEAL LINEARITY

LINEARITY PLOT
USING TONS
SHOWN ON
"TOTAL" DISPLAYS

- DRAW IN :** _____
- CHANNEL NUMBER
 - SENSOR LOCATION
 - MONITOR LOCATION
 - LOAD CELL LOCATION
 - DIRECTION OF MATL. FLOW

SHUNT RESISTORS:
ONE MEG ? YES ___ NO ___

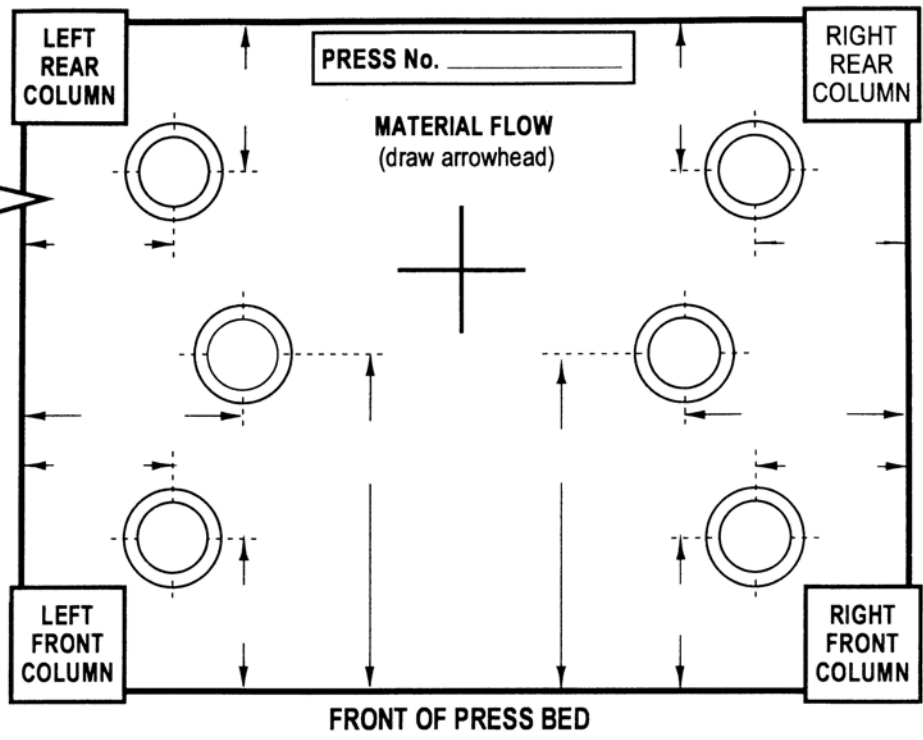
OTHER RESISTORS:

CHAN. 1 _____

CHAN. 2 _____

CHAN. 3 _____

CHAN. 4 _____



TYPE OF LOAD CELLS: _____ TYPE OF LOAD CELL READOUT: _____

TONNAGE SENSORS

CALIBRATION LOAD CELLS

SENSOR NUMBER	SERIAL NO.	CAL. NO.	X 10	LOCATION (LF, RF, LR, RR)
1				
2				
3				
4				

CELL NUMBER	CAPACITY TONS	SERIAL NO.	CAL. NO.
1			
2			
3			
4			

CCM TYPE: _____ CCM OFFSET: _____ STI REFERENCE NUMBER: LOW: _____ HIGH: _____

STI DEGREES IN CHANNEL No. 1: _____

TRIGGERED FROM PROBE ? YES ___ NO ___ (Show threshold value if not triggered from probe): _____

TRIPPED ALARM RELAY STOPS PRESS ? YES ___ NO ___ EXPLAIN: _____

ALL STICKERS AND DOCUMENTS FILLED OUT ? YES ___ NO ___ IF NOT, EXPLAIN WHY: _____

TFP No.: HIGH 2 _____ LOW 2 _____ HIGH 4 _____ LOW 4 _____ HIGH 6 _____ LOW 6 _____ HIGH 8 _____ LOW 8 _____

COMMENTS: _____

TESTS MADE BY: _____ TESTS ACCEPTED BY: _____ DATE: _____

MAIL ADDRESS:
TOLEDO TRANSDUCERS, INC.
P.O. BOX 10
HOLLAND, OHIO 43528

SHIPPING ADDRESS:
TOLEDO TRANSDUCERS, INC.
6834 SPRING VALLEY DR.
HOLLAND, OHIO 43528

PHONE: 1 (419) 867-4170
FAX: 1 (419) 867-4180