

PNmail User's Manual

Revision: B

**THIS PAGE
INTENTIONALLY
LEFT BLANK**



Table of Contents

1: Overview	5
2: Installation	6
3: Configuration	9
Configure Mail Settings	10
Mail Recipient List	11
Configure Alerts	12
Configure Database	13
Testing the Mail Configuration	14
Starting PNmail Automatically	15
4: Operation	16
Alert Message Details	16
Other Notes.....	17

**THIS PAGE
INTENTIONALLY
LEFT BLANK**



1: Overview

PNmail is an add-on product to the Toledo Integrated Systems' PressNet Networking Suite. PNmail works along with PressNet to provide instant notification when an alarm occurs so that action can be taken immediately at the time of the incident.

PNmail works by monitoring PressNet's HardHit database. Any new incoming alarms are analyzed and sent to an email recipient list that can include management, maintenance personnel, or anyone else that needs to know. And because some incidents are more critical than others, the incoming events can be filtered so that only certain types of alarms will trigger an instant notification.



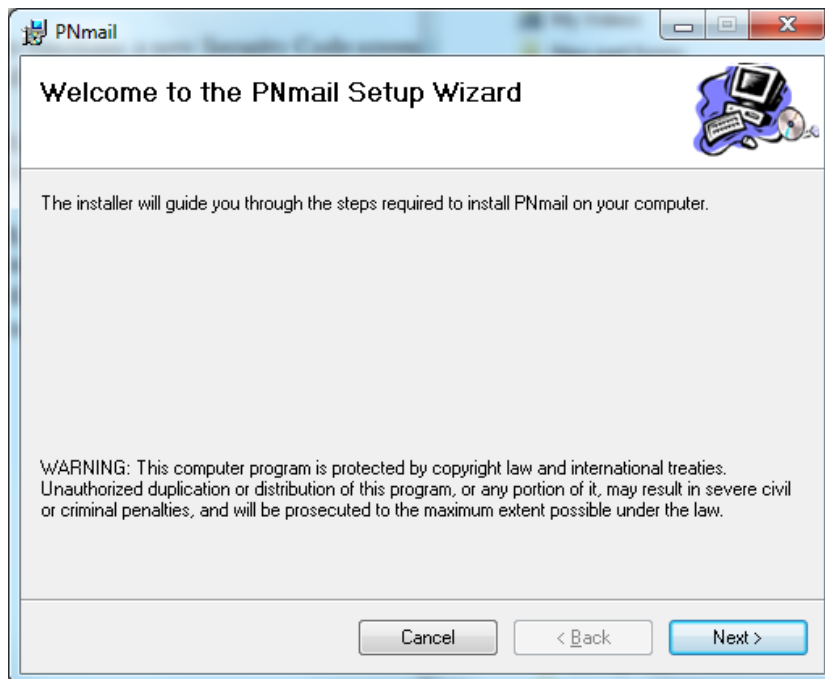
2: Installation

PNmail is typically installed on the same machine that hosts the PressNet Networking Suite. The installation computer must meet the following requirements:

- Microsoft Windows XP operating system or later
- Microsoft .Net Framework 3.5
- Toledo Integrated Systems' PressNet 5 Networking Suite or later, including a properly configured PN5 Communication Driver and MySQL database
- A valid email account from which to send the notifications

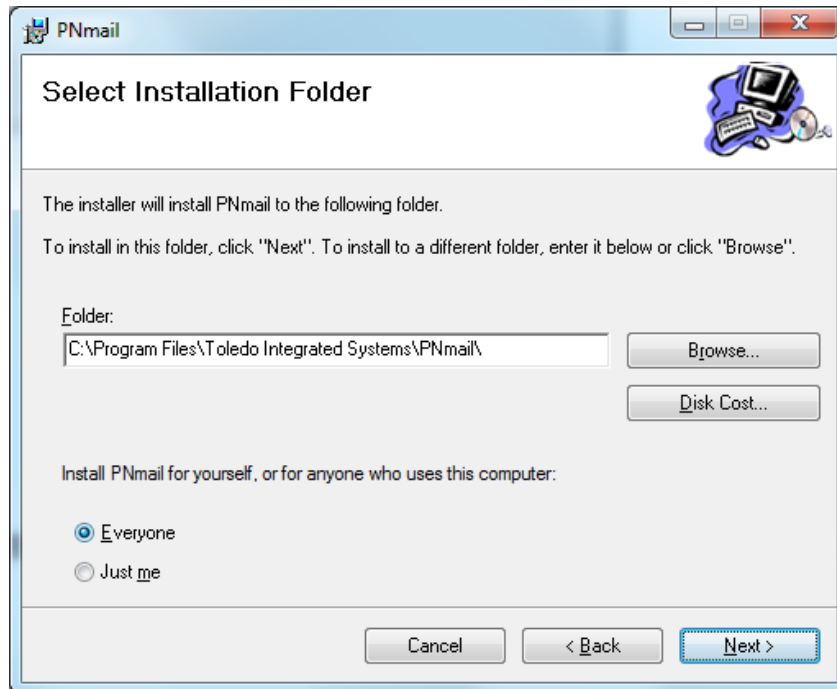
In addition, you must be logged into Windows using an account with sufficient administrative privileges in order to install PNmail.

To begin installation, double-click PNmail's **setup.exe** installation file from the PressNet PC. If the proper .Net Framework has not yet been installed, you will be prompted to download and install it prior to installing PNmail. The PNmail Setup Wizard will then start.

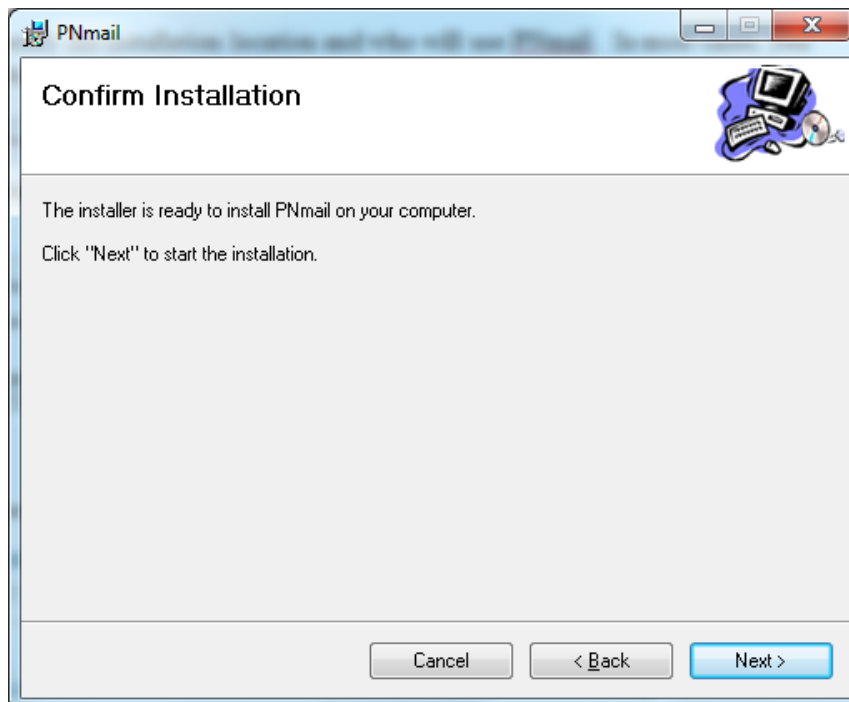


Click **Next>**.

On the next screen, specify the installation location and who will use PNmail.

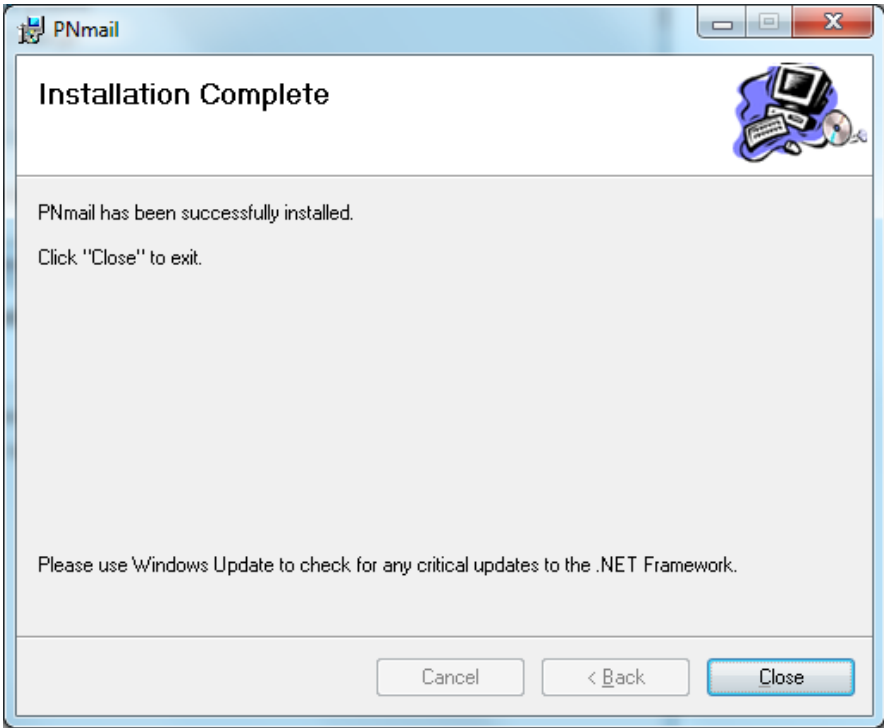


In most cases, you should accept the defaults and click **Next>**.



Finally, confirm the installation by clicking **Next>**.

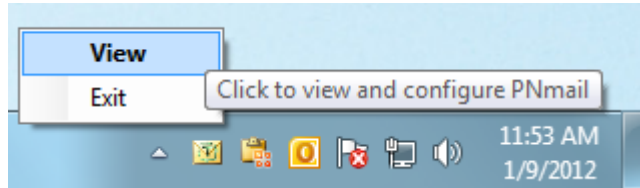
When the installation completes, click **Close** to exit the wizard.



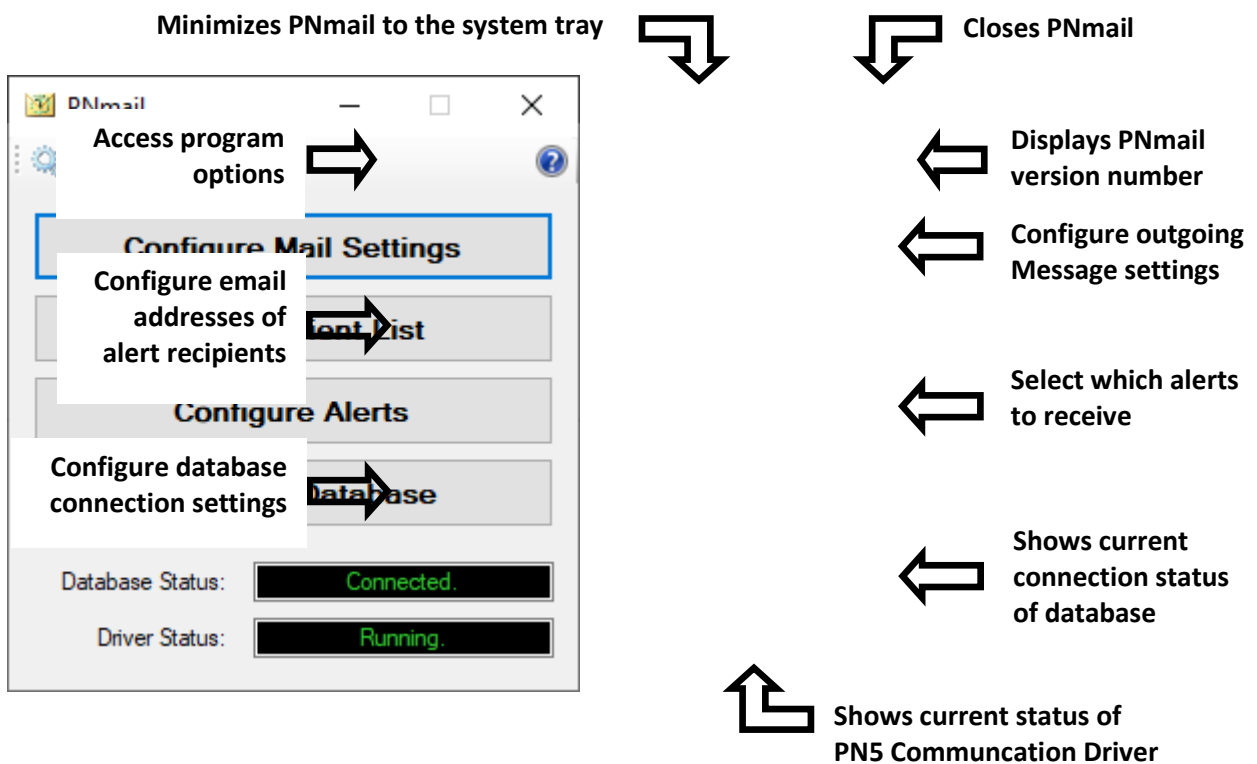
3: Configuration

After installing PNmail, start the program by clicking **Start→All Programs→Toledo Integrated Systems→PNmail→PNmail**, or by double-clicking the PNmail desktop shortcut. PNmail starts minimized to the system tray.

To open the PNmail user interface, double-click the system tray icon or right-click and choose **View**.

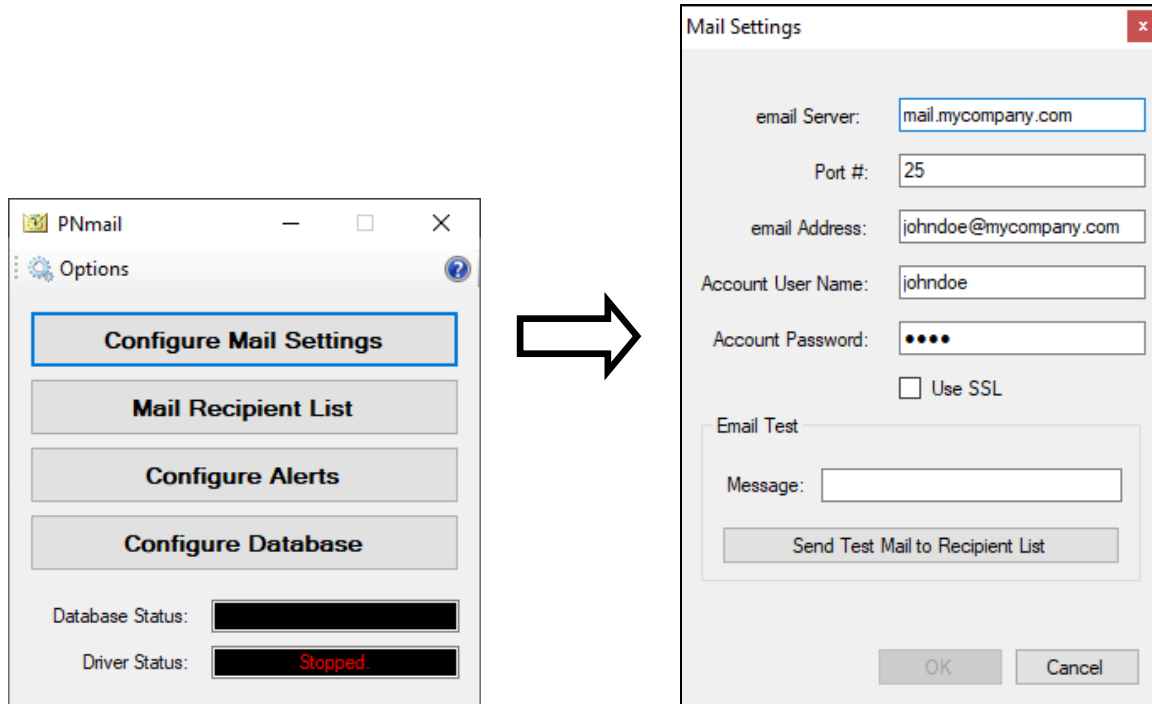


The user interface will appear. Below is an overview of the user interface.



Configure Mail Settings:

In order for PNmail to send out alerts, you must enter the settings for your mail server, as well as an email account from which to send alerts. To get started, click the **Configure Mail Settings** button.



The following information is required:

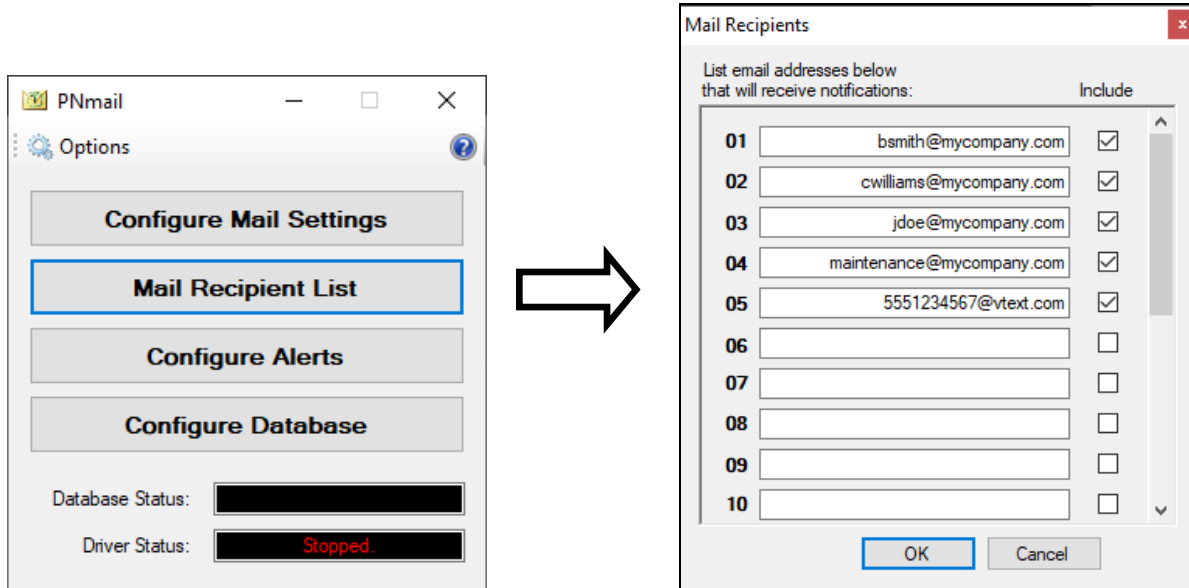
- **email Server**
The name of the email server through which the mail will be sent.
- **Port #**
The port number used by the mail server.
- **email Address**
A valid email address configured to send mail on the network. This is the address from which the alerts will be sent, so you may choose to set up a new dedicated email account to use for PNmail (i.e. pnmail@mycompany.com).
- **Account User Name**
The email account user name, typically the part of the address before the “@”.
- **Account Password**
The password for the email account.
- **Use SSL**
Check this box if the mail server requires a secure connection.

Contact your IT department if you are unsure of any of these settings.

When you are finished entering the settings, click the **OK** button to save or click the **Cancel** button to close the Mail Settings dialog without saving.

Mail Recipient List:

When a new alarm is detected, PNmail can send an alert message to up to ten email recipients. To open the Mail Recipients dialog, click the **Mail Recipient List** button.



In the text boxes, enter up to 20 email addresses. When an alarm occurs, PNmail will send an alert to each address in the list. Each address has a corresponding **Include** checkbox. If you wish to temporarily exclude an address from receiving the alerts, simply uncheck the **Include** box.

Besides sending to email addresses, you can also send the alert as a text message to most mobile phones. The method varies from one wireless carrier to another, but some of the major carriers are listed below. Remember to check with your wireless carrier for applicable text message rates and fees.

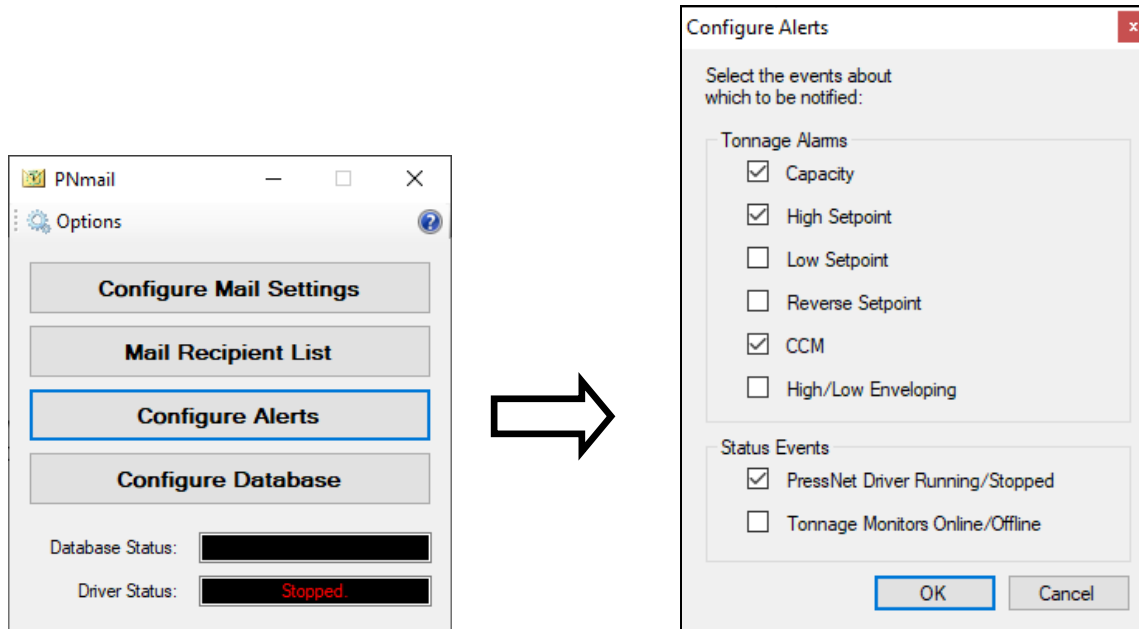
- **Verizon:** [10-digit phone number]@vtext.com
- **AT&T:** [10-digit phone number]@txt.att.net
- **Sprint:** [10-digit phone number]@messaging.sprintpcs.com
- **Cricket:** [10-digit phone number]@mms.cricketwireless.net
- **Boost:** [10-digit phone number]@sms.myboostmobile.com
- **T-Mobile:** [10-digit phone number]@tmomail.net
- **Virgin:** [10-digit phone number]@vmpix.com

When you are finished, click the **OK** button to save or click the **Cancel** button to close the Mail Recipients dialog without saving.



Configure Alerts:

Because needs vary from one manufacturer to another, PNmail allows you to customize your alerts so that you receive notifications about only the type of alarms you consider to be critical. To begin customizing the alerts, click the **Configure Alerts** button.



You may choose from among the following tonnage alarm types:

- **Capacity:** Press tonnage exceeded the press manufacturer's rated maximum tonnage.
- **High Setpoint:** Press tonnage exceeded the tonnage monitor's high setpoint value.
- **Low Setpoint:** Press tonnage failed to reach the tonnage monitor's low setpoint value.
- **Reverse Setpoint:** Press's reverse (snap-through) tonnage exceeded the tonnage monitor's reverse setpoint value. Available only on certain tonnage monitors.
- **CCM (Critical Curve Monitoring):** Press tonnage exceeded the press manufacturer's critical curve. Available only on certain resolver-triggered tonnage monitors that have been updated with the press manufacturer's critical curve.
- **High/Low Enveloping:** Press tonnage violated the tonnage monitor's high or low enveloping curve. Available only on certain resolver-triggered tonnage monitors.

In addition to tonnage alarms, you may choose to also receive alerts for status events:

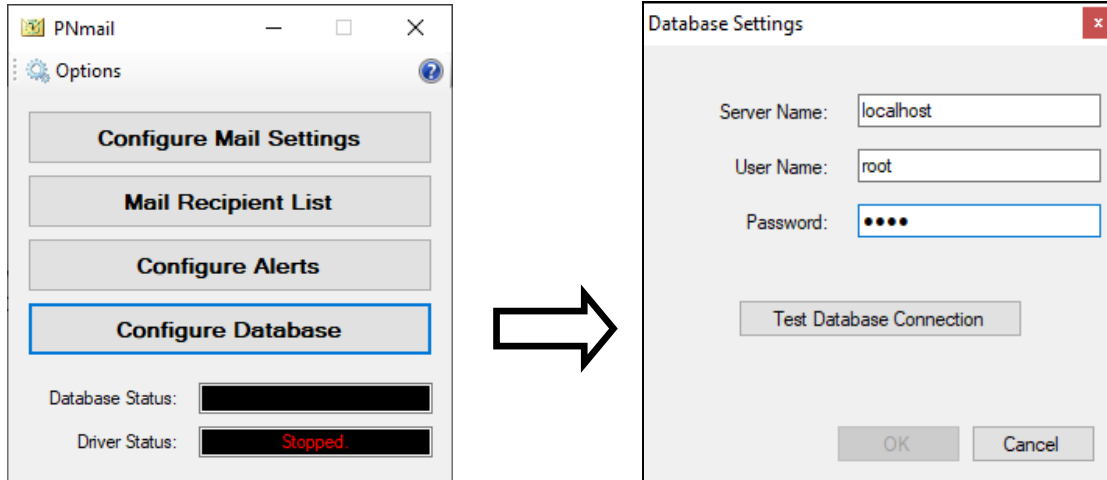
- **PressNet Driver Running/Stopped:** The PressNet Comm Driver began actively polling the tonnage monitors, or the Driver stopped its polling.
- **Tonnage Monitors Online/Offline:** A tonnage monitor that was offline is now online, or a tonnage monitor that was online is now offline.

Check the box next to the event type about which you wish to receive notifications. Uncheck the event types about which you do not wish to be notified.

When you are finished, click the **OK** button to save or click the **Cancel** button to close the Configure Alerts dialog without saving.

Configure Database:

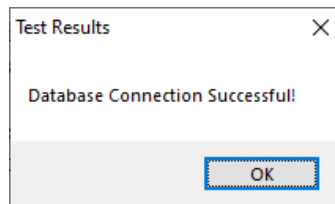
PNmail monitors PressNet's HardHit database to detect new incoming alarms. To configure PNmail with the proper logon information for the database, click the **Configure Database** button to bring up the Database Settings dialog.



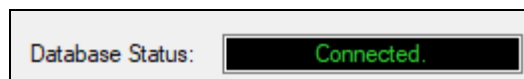
The following information is required:

- **Server Name**
The name of the computer that hosts the MySQL 'toledo.hardhit' database. In a typical PressNet installation, this will be 'localhost'.
- **User Name**
The MySQL user name. Default is 'root'. If the MySQL user name has been changed from its default, this must be updated to match.
- **Password**
The password for the above MySQL user name. Default is '1234'. If the MySQL password has been changed from its default, this must be updated to match.

Once the database settings have been entered, click the **Test Database Connection** button. The test results will indicate if the connection was successful or if it failed.

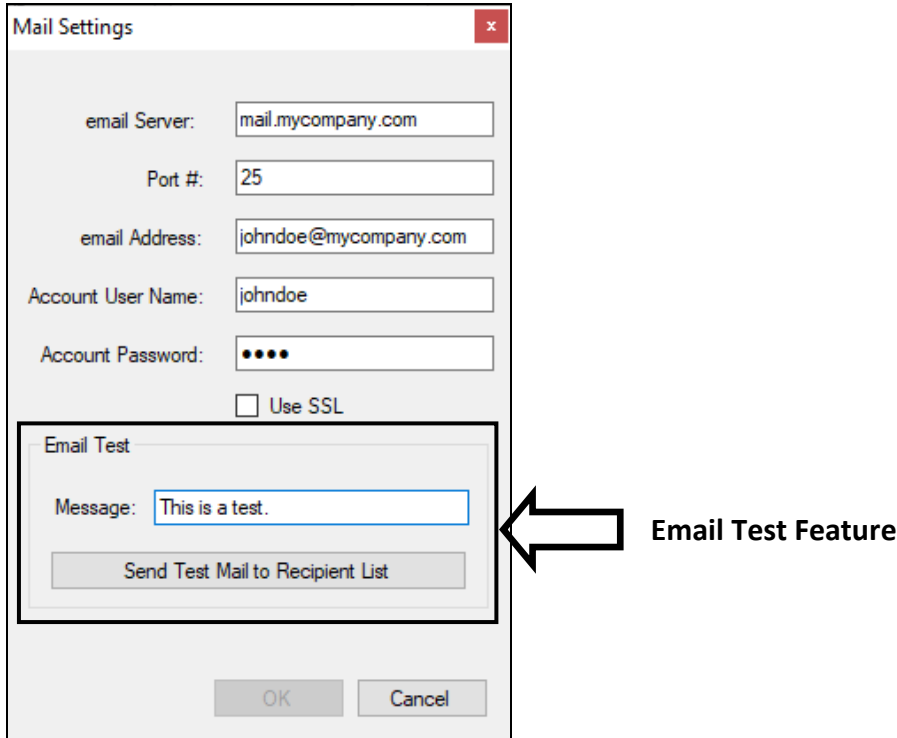


When you are finished entering the settings, click the **OK** button to save or click the **Cancel** button to close the Database Settings dialog without saving. Once the database settings are saved, the **Database Status** on the main user interface will update to reflect the connection status.



Testing the Mail Configuration:

Once the mail settings have been configured and the mail recipient list has been updated, you should test your setup to ensure that PNmail will be able to properly send its alerts when an event occurs. This can be easily accomplished with the **Email Test** feature in the Mail Settings configuration.

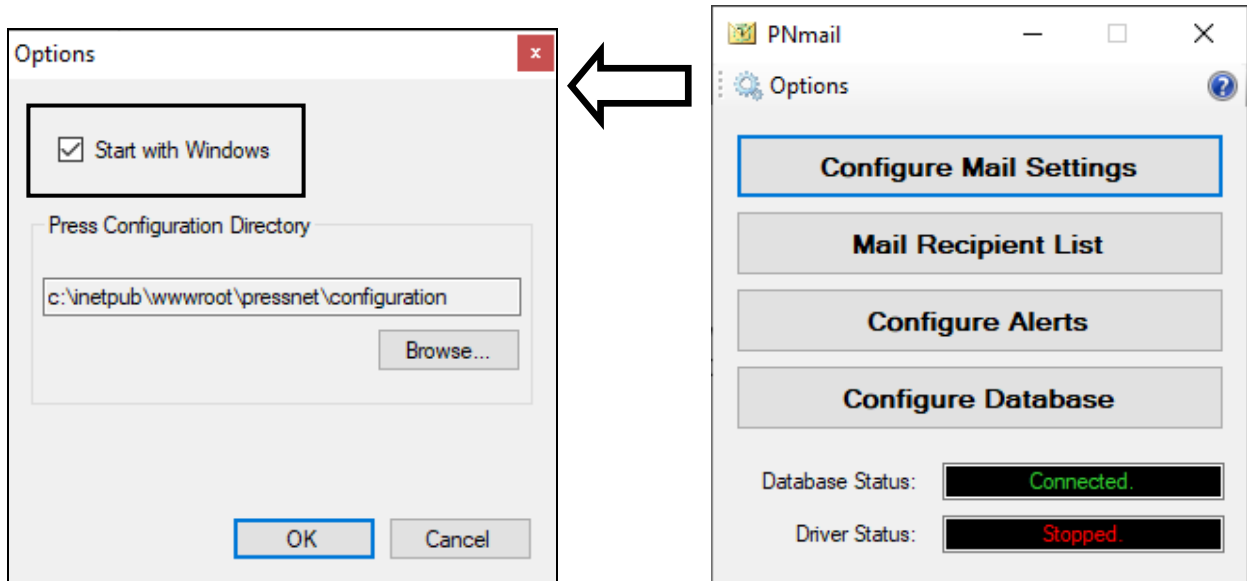


Simply type a brief message in the **Message** text box and click the **Send Test Mail to Recipient List** button. If the mail settings were configured correctly, each enabled email address in the mail recipient list should receive the test message with the subject "Test Message from PNmail." If there is a problem with the mail settings, you will receive an error dialog with further details.

Note: It may be necessary to adjust the Junk mail filter in the recipients' email program to allow the alerts to be properly received.

Starting PNmail Automatically:

PNmail can be configured to start automatically with Windows login. Click **Options** at the top of the main user interface.



Check the **Start with Windows** box to update the Windows registry to start PNmail in the system tray when Windows starts. Uncheck the box if you do not wish to start PNmail automatically.

When you are finished, click the **OK** button to save or click the **Cancel** button to close the Options dialog without saving.

Note for Windows 7 users:

When you click **OK**, the Windows User Account Control (UAC) may ask your permission to allow the program to make changes to your computer. Answer **Yes** to allow PNmail to update the Windows registry.

4: Operation

Alert Message Details:

Once PNmail has properly been configured and tested, you are now ready to receive alerts. Below is an example of a typical alert message.

	From: PNmail@mycompany.com
	To: jdoe@mycompany.com
	Subject: Alert from PressNet
Type of alarm / corner →	[Capacity alarm on CH1]
Name of press →	on Press 1-A
Date / time of alarm →	at 1/4/2012 8:45:20 AM

Description of message body:

- **Type of alarm / corner**
Describes the type of alarm (Capacity, High, Low, Reverse, etc.) and the press corner (i.e. channel) on which it occurred.

The channel numbers follow the standard Toledo Integrated Systems naming format:

Outer Slide (if double-action press)

CH0 = Total
CH1 = Left-Rear corner
CH2 = Right-Rear corner
CH3 = Left-Front corner
CH4 = Right-Front corner

Inner Slide (if double-action press)

CH5 = Total
CH6 = Left-Rear corner
CH7 = Right-Rear corner
CH8 = Left-Front corner
CH9 = Right-Front corner

If multiple alarms happened on the same press stroke, each will be detailed within its own set of brackets [].

- **Name of press**
The name of the press on which the alarm occurred. This name is assigned in PressNet.
- **Date / time of alarm**
The date and time that the alarm occurred.



Other Notes:

- PNmail only sends alerts for new events that occur while the program is running. If an alarm happens while PNmail is closed, no alert will be sent for the alarm the next time PNmail starts.