

**PressWatch
Load Signature ZT Series
Load Monitor
User's Manual**

Revision: A

Table of Contents

Limited Warranty	4
Features Overview	5
Specifications.....	7
Installation	9
Mounting the LS-ZT	9
LS-ZT Components	10
Conduit Hole Selection	11
AC Power Requirement and Connection	12
Tonnage Sensor Connection	13
Resolver Connection	17
Resolver Input Setup.....	19
Shutdown (Stop) Relays	22
Serial Port Connection	23
Operation.....	25
Overview	25
Initial Startup	26
Main Window	27
Tonnage	29
Signatures.....	32
Statistics	35
Setpoints	36
Configure.....	40
Calibration	60
Job Settings.....	62
External Configuration Files	66
Live Data Output Feature	69
Calibration Procedure.....	71
Operator's Guide	81
Appendix.....	83
A) Sensor Installation (Doc# 11080).....	83
B) Calibration Sheets (2) (Form# 1224).....	83

Table of Figures

Figure 1-1: Mounting Dimensions.....	9
Figure 1-2: LS-ZT Components.....	10
Figure 1-3: Conduit Hole Selection.....	11
Figure 1-4: AC Power Wiring	12
Figure 1-5: Tonnage Sensor Input	14
Figure 1-6: Tonnage Sensor Cable Stripping.....	15



Figure 1-7: Tonnage Sensor Wiring..... 16

Figure 1-8: Resolver Input Descriptions 17

Figure 1-9: Resolver Wiring 18

Figure 1-10: Resolver Setup 19

Figure 1-11: Shutdown Relay Wiring 22

Figure 1-12: Serial Port Connection..... 23

Figure 1-13: Serial PressNet Connection 24

Figure 2-1: System Overview 25

Figure 2-2: Communication Error Alert 26

Figure 2-3: Communication Error (Historical Data Box)..... 26

Figure 2-4: SlimWare Main Window 27

Figure 2-5: Tonnage Screen (4-Channel) 29

Figure 2-6: Signature Screen (4-Channel) 32

Figure 2-7: Statistics Screen..... 35

Figure 2-8: Standard Setpoints Screen (4-Channel) 36

Figure 2-9: Envelope Setpoints Screen (4-Channel) 39

Figure 2-10: Configure Settings - Names Screen 40

Figure 2-11: Configure Settings - User Preferences Screen 41

Figure 2-12: Configure Settings - External App Screen..... 44

Figure 2-13: Configure Settings - Job Settings Screen 45

Figure 2-14: Configure Hardware/Trigger - Hardware Configuration Screen..... 46

Figure 2-15: Configure Hardware/Trigger - Capacity Screen 48

Figure 2-16: Configure Hardware/Trigger - Trigger Screen..... 49

Figure 2-17: Configure Alarm Settings Screen (4-Channel)..... 51

Figure 2-18: Configure Comms/Network - Common Screen..... 52

Figure 2-19: Configure Comms/Network - Ethernet Screen 54

Figure 2-20: Configure Comms/Network - Serial Screen 56

Figure 2-21: Configure Comms/Network - PLC Screen..... 58

Figure 2-22: Configure Calibration Screen..... 60

Figure 2-23: Load Existing Job Screen 62

Figure 2-24: Edit Existing Job Screen 63

Figure 2-25: Create New Job Screen..... 64

Figure 2-26: Delete Existing Job Screen 65

Figure 2-27: Ext_Job.ini File..... 66

Figure 2-28: Slimware_Stat.ini File 67

Figure 2-29: livedata.csv File 69

Limited Warranty

This unit is warranted by the manufacturer, Toledo Transducers, Inc., to be free of defects in workmanship and materials for one year from date of manufacturer's shipment. This warranty is limited to repairing or replacing products which manufacturer's investigation shows were defective at the time of shipment by the manufacturer.

All products subject to this warranty must be returned for examination, repair or replacement

F.O.B. to: Toledo Transducers, Inc.
6834 Spring Valley Drive
Holland, Ohio 43528

The express warranty set forth herein is in lieu of all other warranties, expressed or implied, including without limitation any warranties of merchant-ability or fitness for a particular purpose. All such warranties are hereby disclaimed and excluded by the manufacturer.

Repair or replacement of defective products as provided above is the sole and exclusive remedy provided thereunder. The manufacturer shall not be liable for any further loss, damages, or expenses, including incidental or consequential damages, directly or indirectly arising from the sale or use of this product.

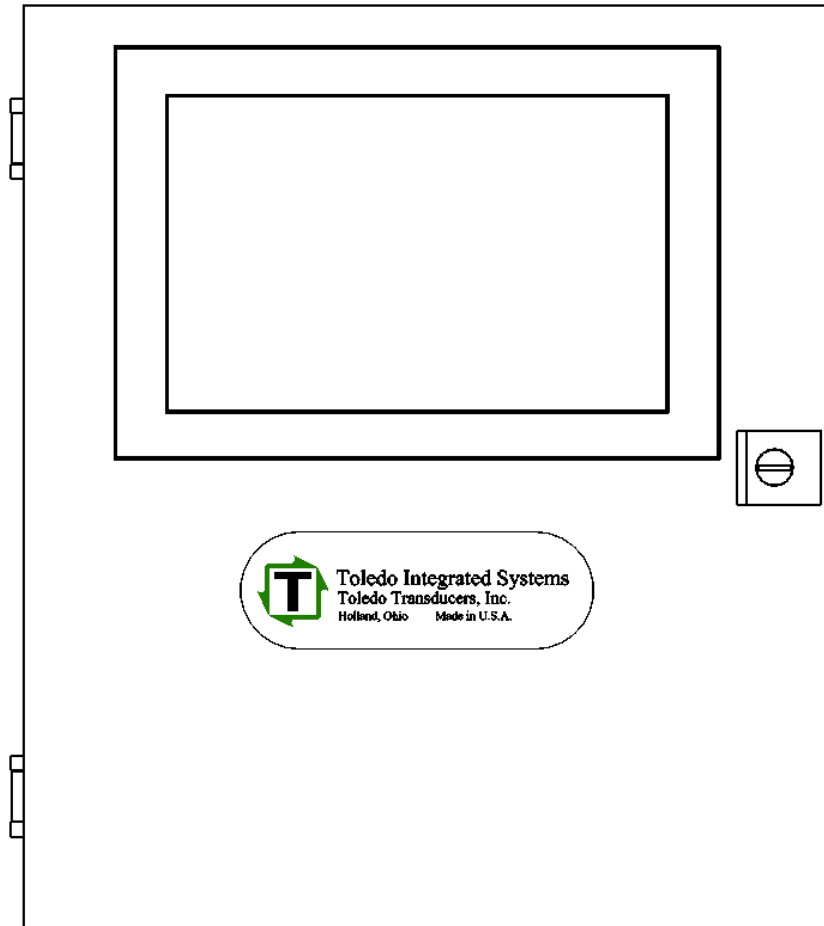
Any unauthorized repair voids this warranty.

There are no warranties that extend beyond those expressly set forth herein.



Features Overview

The PressWatch LS-ZT Series is a press tonnage monitor with signatures. It integrates tonnage monitoring and signatures with enveloping into ONE system. It features a large 10.1" touch screen interface, making the tonnage and signatures easy to read and access.



FEATURES

- 2 or 4 channel tonnage monitoring
- Reverse tonnage
- Signatures - each press corner and total
- 5 signature zones for enveloping
- Critical Curve Monitoring - CCM
- Hard Hit signature storage
- Job storage
- 3 password levels
- PressNet 5 compatibility

OPTIONS

- Additional 2 or 4 channels for tonnage monitoring or analog input
- TR-1 Resolver

THIS PAGE
INTENTIONALLY
LEFT BLANK

Specifications

Tonnage	No. of Channels	Two or Four (Six or Eight optional)
	Sensor Inputs	Full bridge strain gage sensors 120 to 1,000 ohms Up to (8) 350 ohm sensors
	Sensor Excitation	Built-in 10VDC @ 250mA max
	Sensor Input Connections	Terminal blocks
	Balance Range	+/- 1mV/V of sensor imbalance
	Gain Ranges	Low range = x50 to x550 adjustable High range = x500 to x5,500 adjustable
	Inaccuracy	+/- 1% of full scale max
	Non-linearity	+/- .02% of full scale max
	Frequency Response	DC to 5 KHz
	Resolution	Each channel provides a 4-digit load value in 1024 count resolution
	Calibration Shunts	Built-in 1 mega ohm (.1%). Accepts custom shunt.
Job Storage	Yes	Limited only by available PC storage capacity
Password	Master level	For supervisor
	Setup level	For die setter
	Operator level	For general operation
Speed Limit	Up to 1200 SPM	
Human Machine Interface (HMI) Unit	Display	10.1" diagonal TFT LCD display Full color SVGA graphics
	Input	Touch screen standard (4) USB 3.0 ports available
	Operating System	Windows 10
	Storage	64GB SSD for operating system and data storage
	Network	Integrated Ethernet NIC (x2)



Shutdown Relays		(2) solid state relays (N.O.) – Top and Immediate Stop 0.5 AMP @ 250V AC/DC
General	Resolver	Built-in excitation supports standard 5000Hz rotor excited positional resolver
	Computer Interface	Giga LAN Ethernet (x2)
	Power requirements	95 Watts max. 85-132VAC @ 50-60Hz or 170-264VAC @ 50-60Hz
	Operating temperature	0-50 degrees Celsius
	Enclosure Dimensions	13.8" W x 15.75" H x 6.3" D, or 350mm W x 400mm H x 161mm D



➤ Installation

1. Mounting the LS-ZT

The LS-ZT is an electronic instrument and must therefore be protected from physical stresses such as shock and vibration. Shock mounts are provided with every LS-ZT for this purpose. Failure to use these shock mounts may result in premature failure of the instrument and possibly void your warranty.

The LS-ZT may be mounted directly to the press or to an adjacent structure. It should be positioned so that the display is easily read, and the instrument is readily accessible. Figure 1-1 below provides the mounting dimensions and demonstrates the proper attachment of the provided shock mounts. A ground wire is also provided for proper instrument grounding and should be installed across one of the shock mounts.

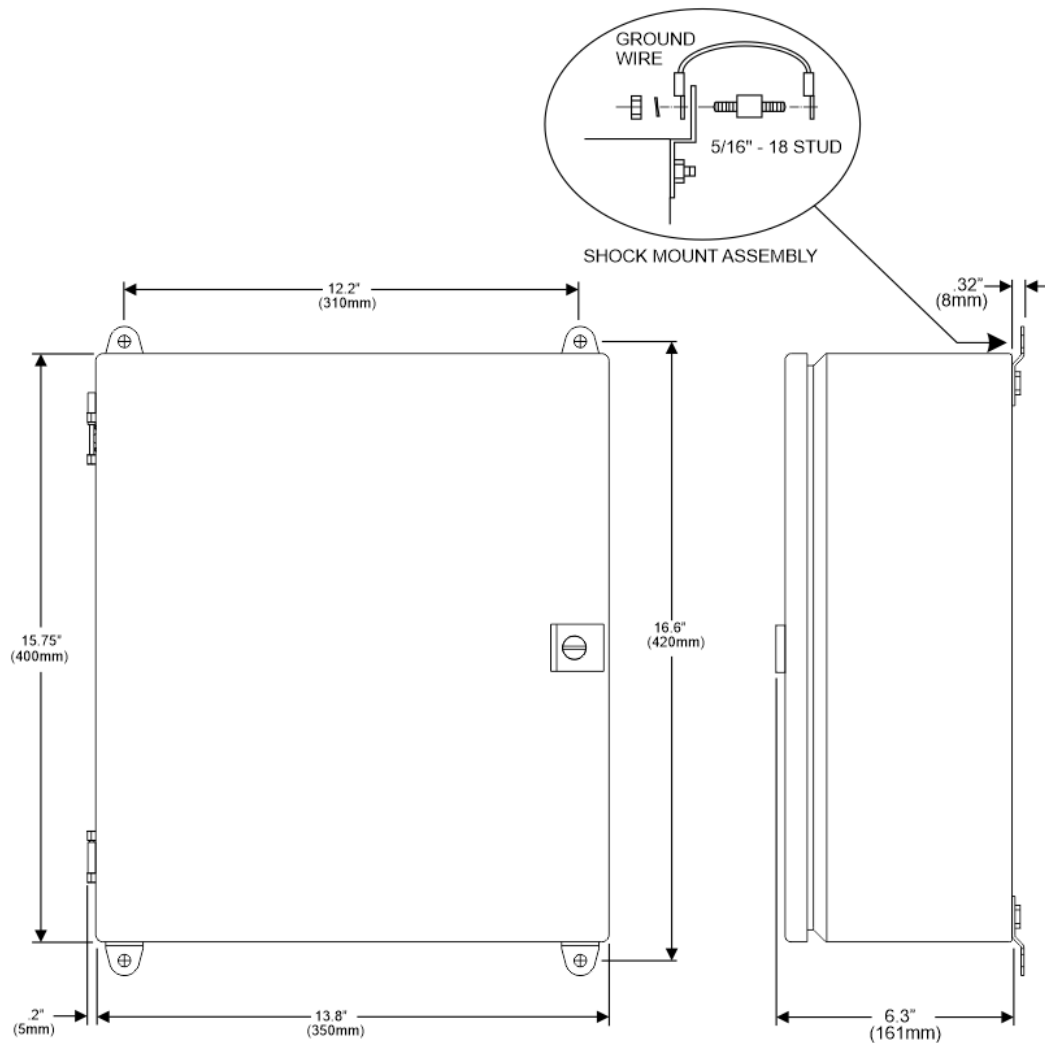


Figure 1-1: Mounting Dimensions

2. LS-ZT Components

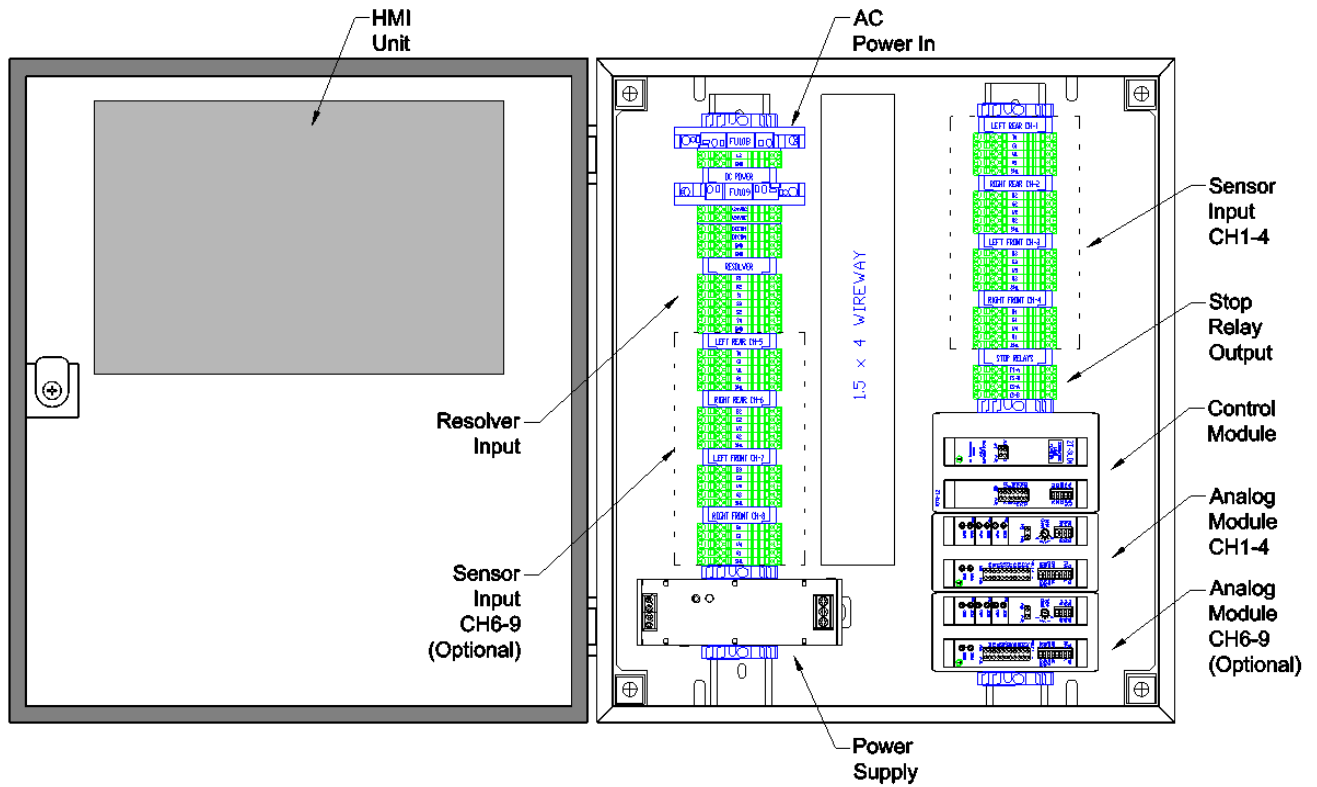


Figure 1-2: LS-ZT Components

Note: The above figure details the layout of a standard 8-Channel LS-ZT. The layout of a 4-Channel LS-ZT will vary slightly.

3. Conduit Hole Selection

Follow Figure 1-3 to select the proper conduit hole for cabling. The holes are for 3/4" conduit, but they can be enlarged in the field if a larger fitting is required.

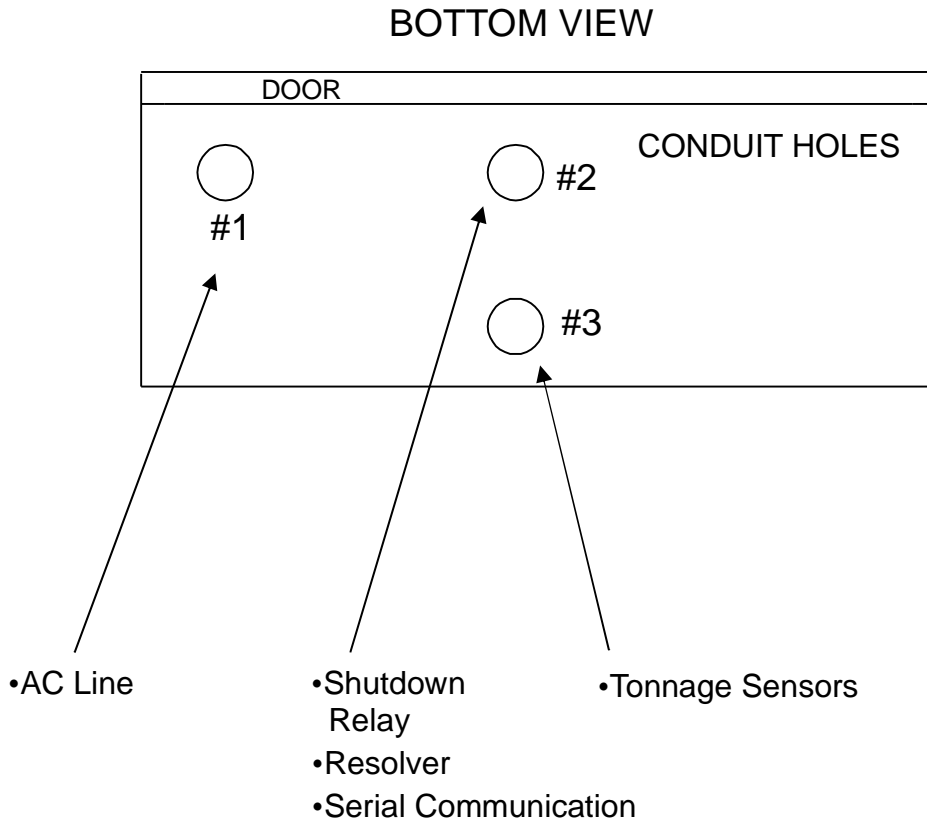


Figure 1-3: Conduit Hole Selection

4. AC Power Requirement and Connection

AC power is connected to the LS-ZT as shown in Figure 1-4. Use Conduit Hole #1 (see Figure 1-3) for the AC Power Wiring. Use the proper fuse as indicated.

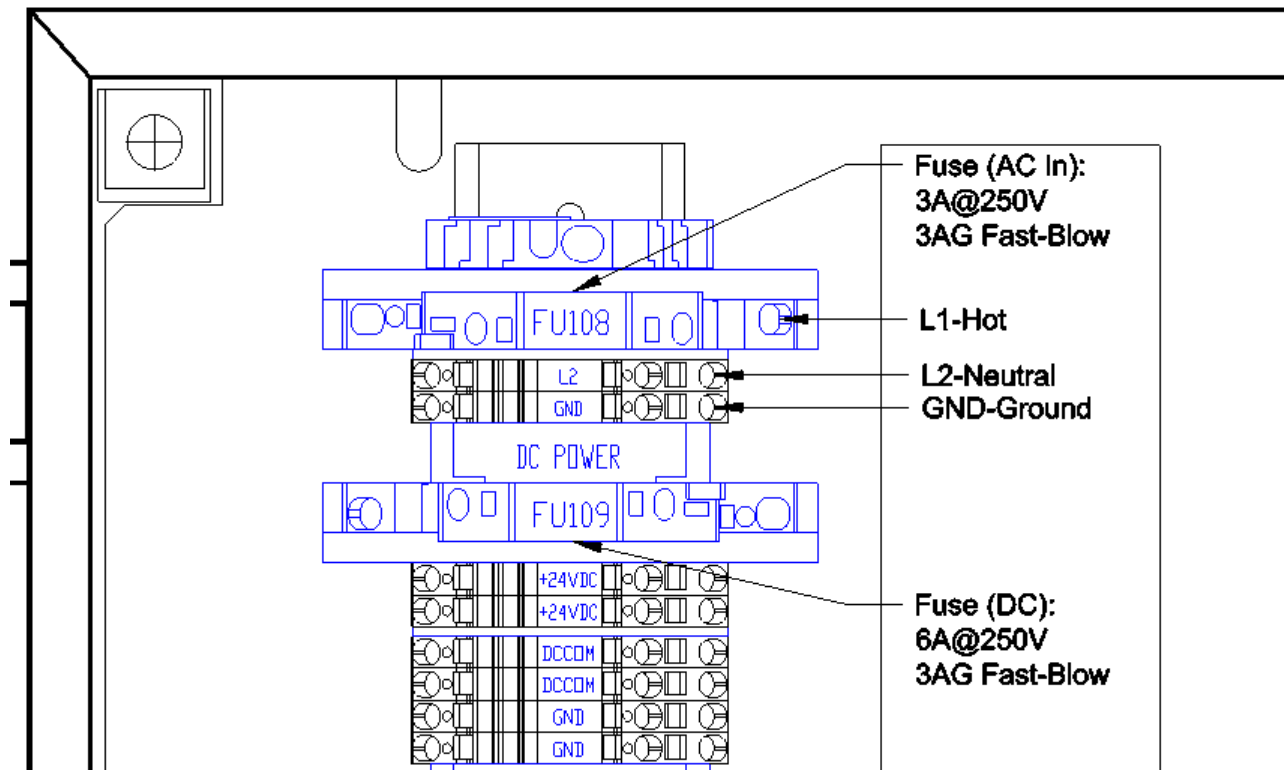


Figure 1-4: AC Power Wiring

5. Tonnage Sensor Connection

Refer to Figure 1-5 for the procedures below to connect tonnage sensors properly:

- 1) Power down the unit. Open the door of the LS-ZT enclosure.
- 2) Run Tonnage Sensor Cables through the Conduit Hole #3 (see Figure 1-3), and upward through the central wireway. For channels 1-4, route them to the right toward the CH1-4 terminal blocks. For channels 6-9, route them to the left toward the CH6-9 terminal blocks.
- 3) Prepare the sensor cable for termination as described in Illustration A on page 15.
- 4) Wire each sensor cable as described in Illustration B on page 16.
- 5) The tonnage sensor cable connections are now complete.



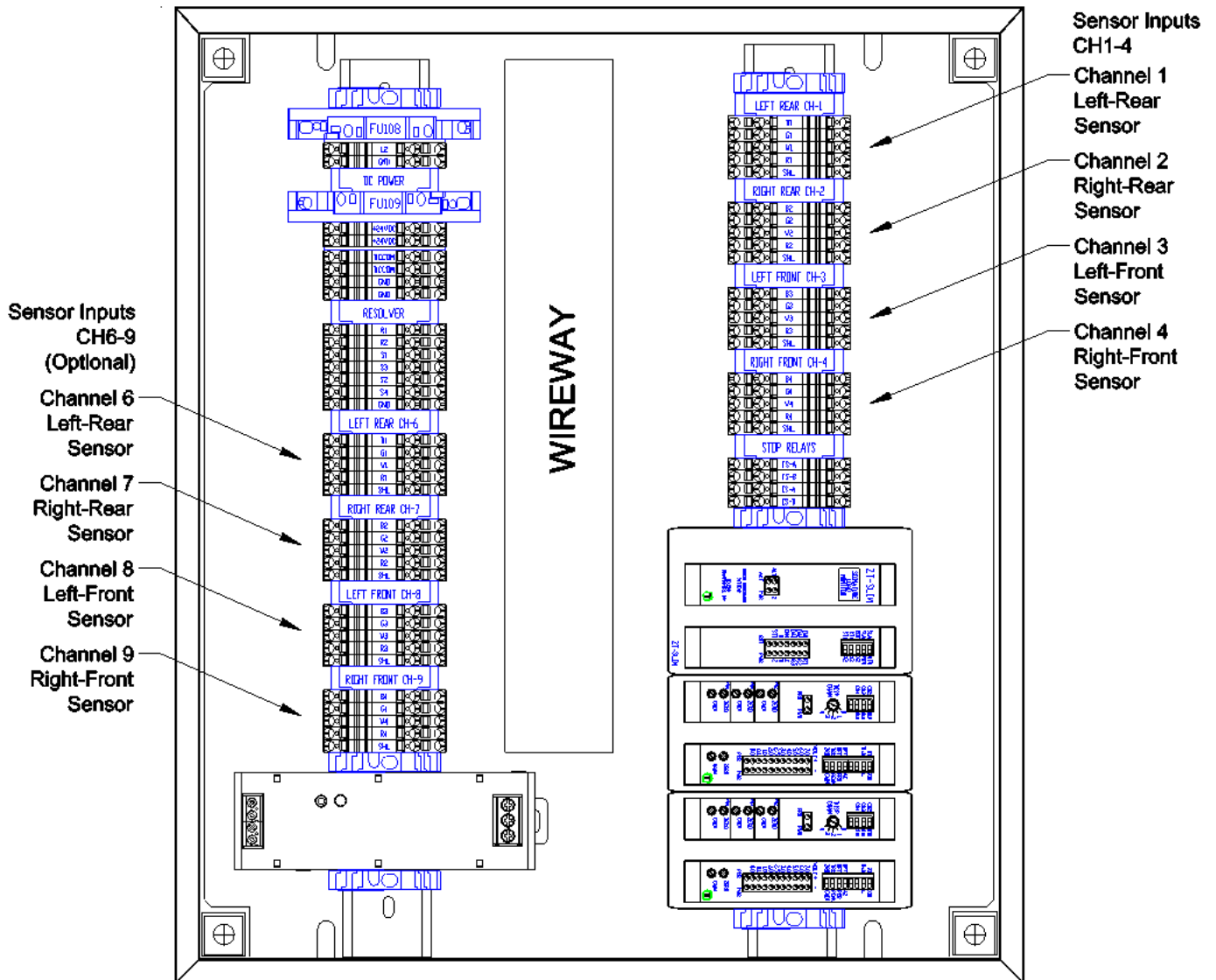


Figure 1-5: Tonnage Sensor Input

Illustration A - Sensor Cable Termination

- 1) Strip the sensor cable as shown in Figure 1-6 below. Be sure not to nick any of the signal conductors or cut the braid shield.

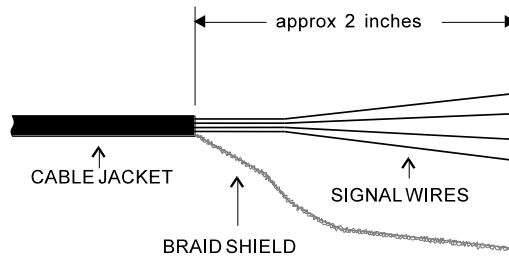


Figure 1-6: Tonnage Sensor Cable Stripping

- 2) Strip approximately $\frac{1}{4}$ " of insulation from each of the four signal conductors.

Note: If your sensor cable is not double shielded with both foil and a braid, electrical noise may affect your output readings.

Illustration B - Sensors Connection

The LS-ZT accepts the signals from Toledo Transducers T-400 sensors as well as other strain gage sensors. Figure 1-7 illustrates the sensor connections.

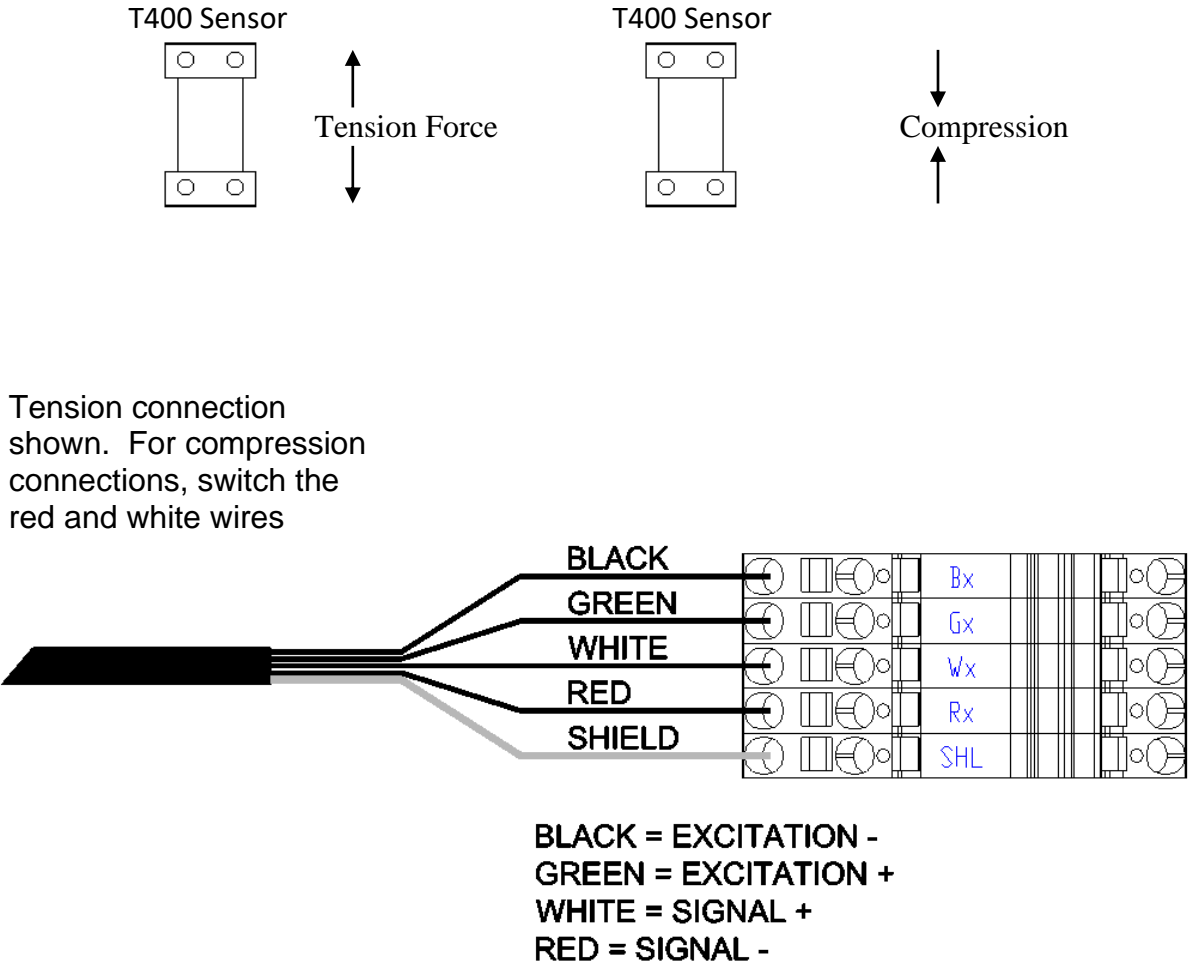


Figure 1-7: Tonnage Sensor Wiring

6. Resolver Connection

The LS-ZT resolver input has a built-in excitation which supports standard 5,000 Hz rotor-excited positional resolvers. The input can be configured in Master Mode or Slave Mode. In Master Mode, the LS-ZT supplies excitation voltage to the resolver and is wired directly to the resolver. In Slave Mode, the LS-ZT does not supply excitation voltage to the resolver and is wired to the resolver input terminal of a Master device, where the resolver signal is shared.

Use Conduit Hole #2 (see Figure 1-3) for the Resolver Cable. The resolver input consists of the following components:

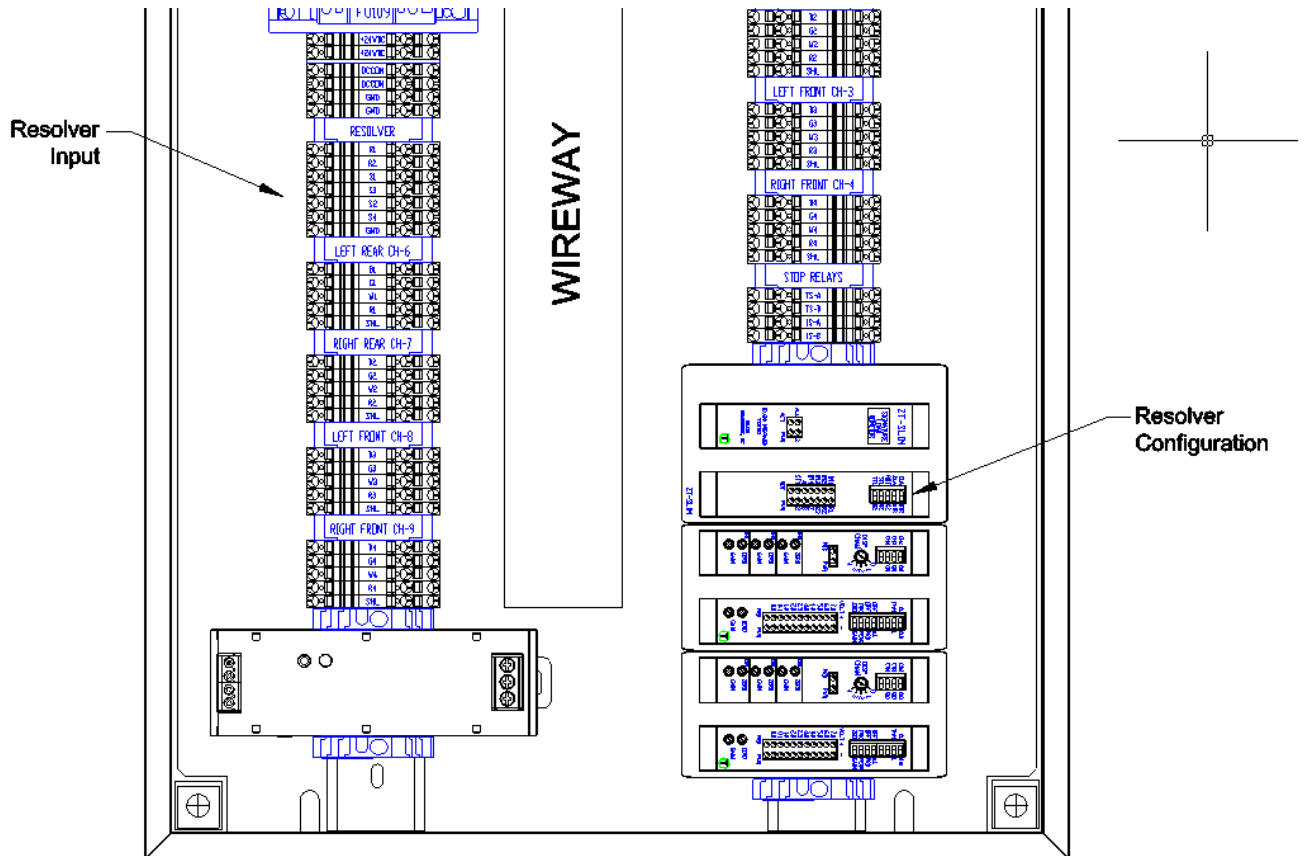
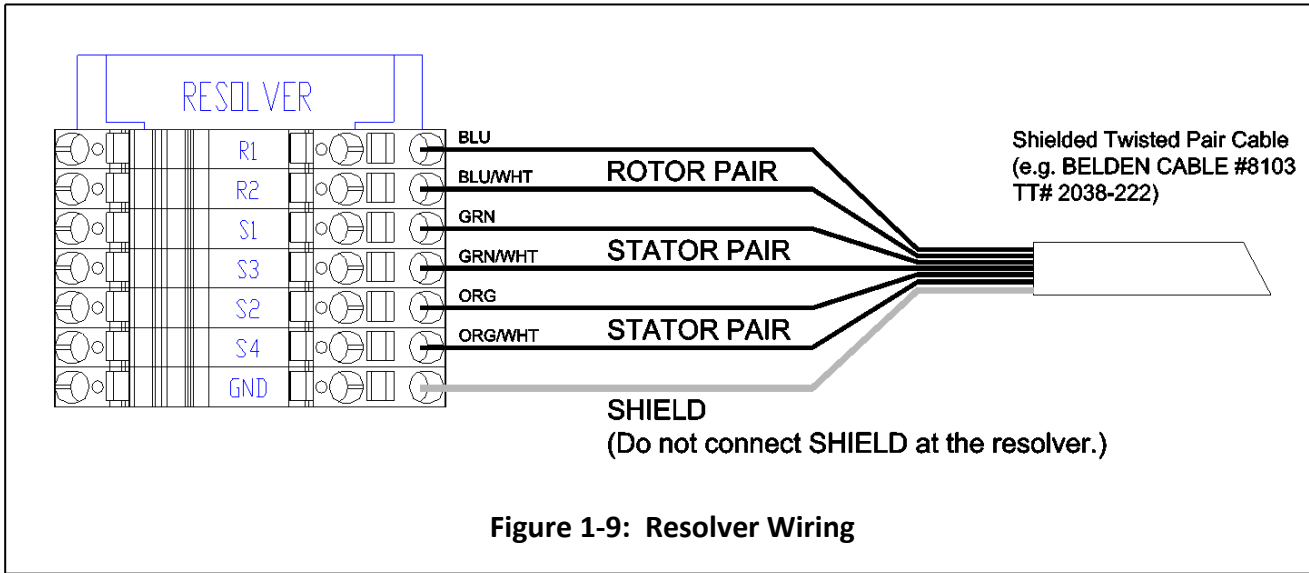


Figure 1-8: Resolver Input Descriptions

Resolver Wiring:



7. Resolver Input Setup

- 1) The resolver input is set up by configuring the resolver dip switches on the control module.

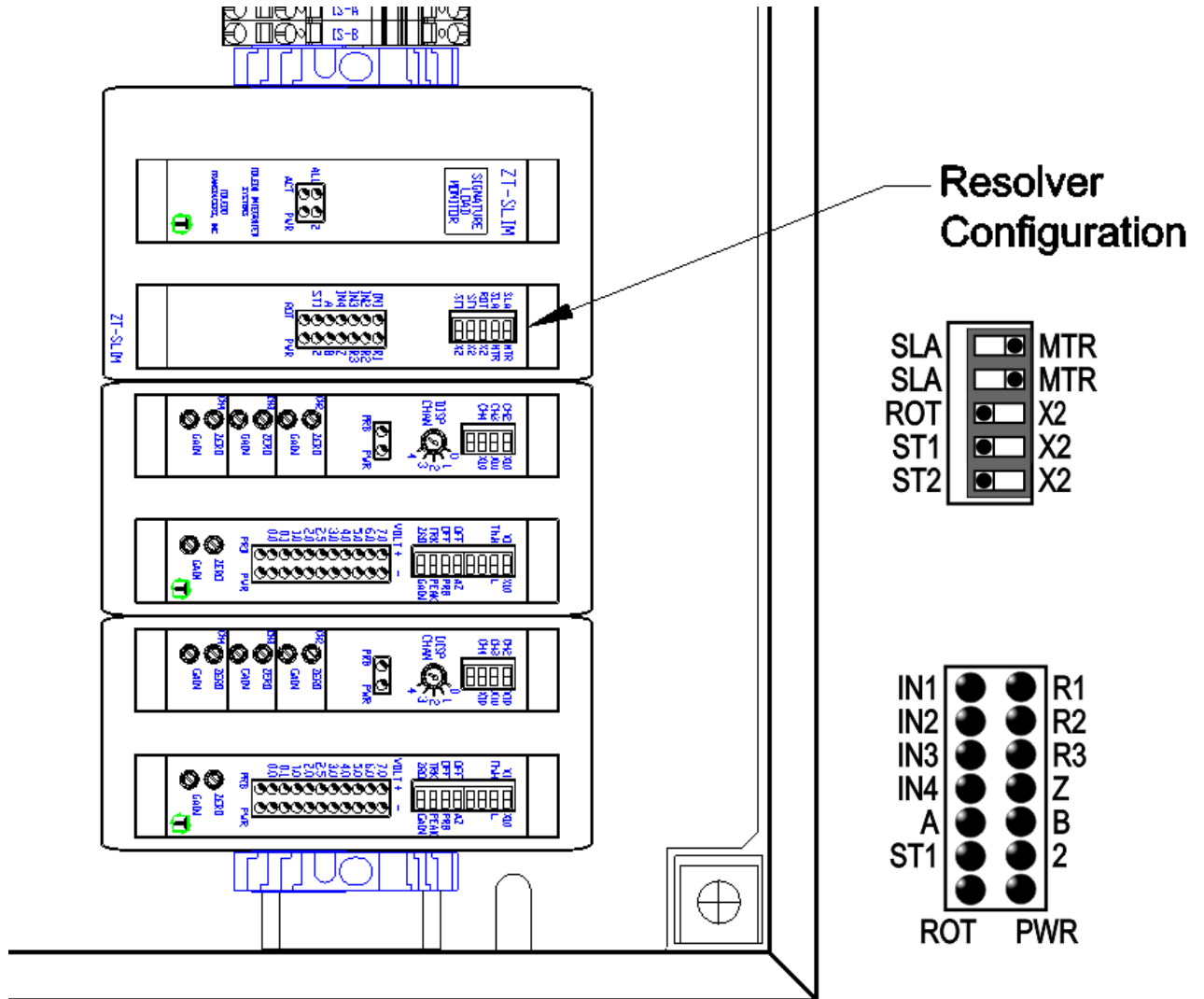
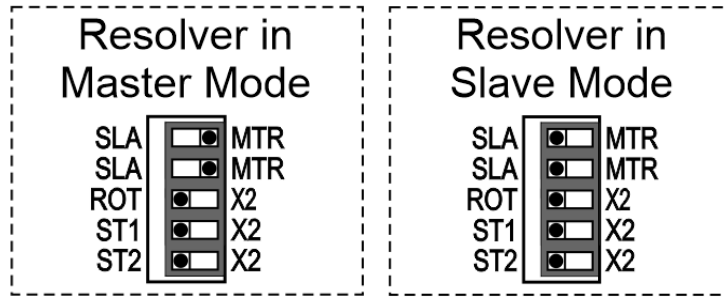


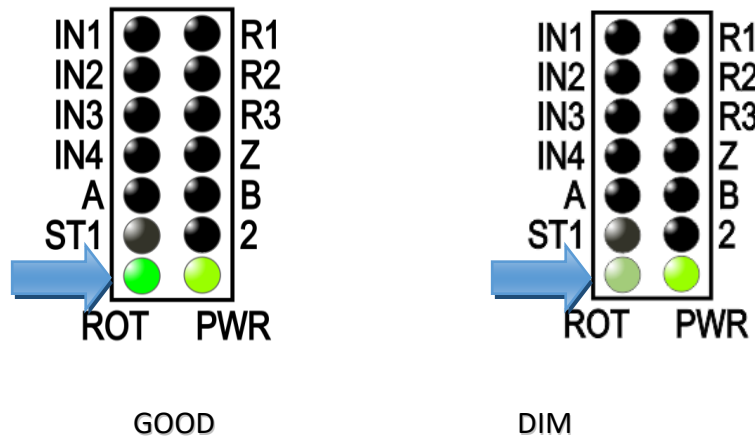
Figure 1-10: Resolver Setup

- If the LS-ZT is the only equipment to interface with the resolver, the control module's DIP switches should be set to MASTER mode. If the resolver also connects to an AMCI resolver card, or other similar equipment, the control module should be set to SLAVE mode.

Note: The top two DIP switches must **both** be set to MTR (Master) or SLA (Slave).

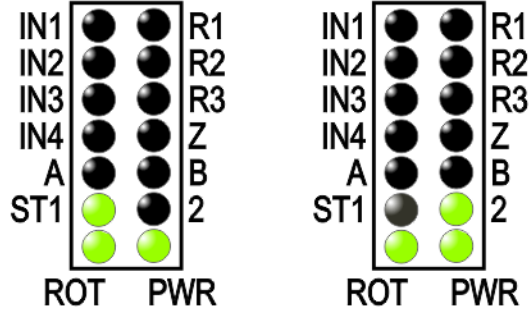


- Make resolver connection.
- With the system on (press can be either running or not running), check the brightness of the ROT LED on the control module.



- If the ROT LED appears to be dim, toggle the ROT, ST1, and ST2 DIP switches to X2.

- 6) With the press running, check to see if the ST1 and ST2 LEDs turn on. They should fade on and off, opposite to each other. When fully on, they should have a similar brightness to the ROT LED.



- 7) Record all DIP switch settings on the control module's calibration card.
- 8) Setup is basically completed. Refer to the Operation section of this manual for resolver offset adjustment.

8. Shutdown (Stop) Relays

Two internal relays are provided for press shutdown, one for top-stop operation and one for immediate-stop operation. Relay rating is 0.5 Amp, 240V AC/DC. Relay contacts open for fault condition.

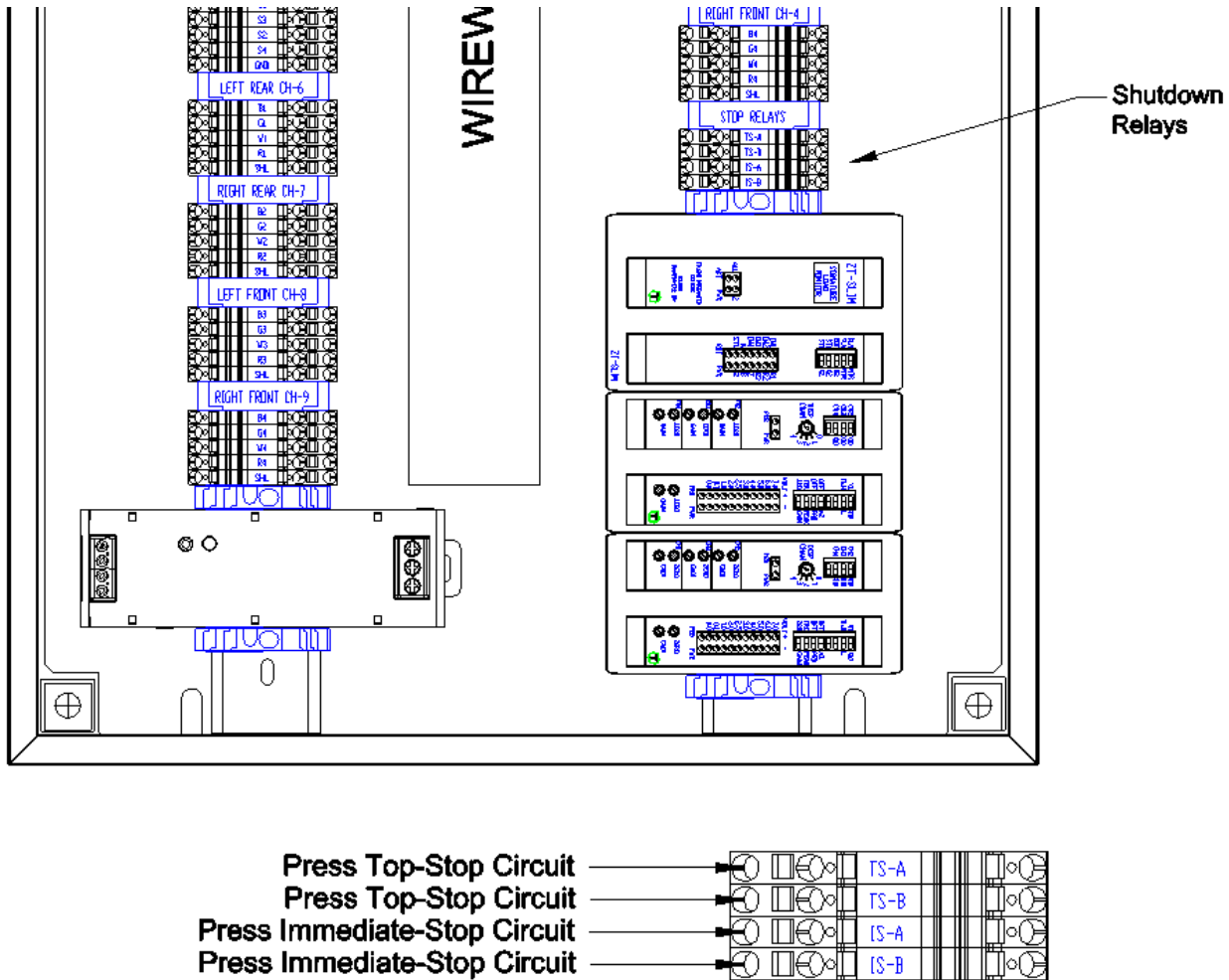


Figure 1-11: Shutdown Relay Wiring

The function of these relays will vary, depending on the type of alarm that occurs and how it is configured in SlimWare.

Top Stop Fault	>>	TS-A/B opens at 290°	IS-A/B remains closed
Immed. Stop Fault	>>	TS-A/B opens immediately	IS-A/B opens immediately

9. Serial Port Connection

An optional RS422/485 serial port can be used for interfacing with a wide variety of instruments like Programmable Logic Controllers, Industrial PCs, and laptop computers. RS422/485 allows the implementation of a daisy chain (multi-drop) serial network, such as the PressNet Networking Suite. Remove the terminal block adapter from the serial port to complete serial wiring (see the wiring diagram on the next page).

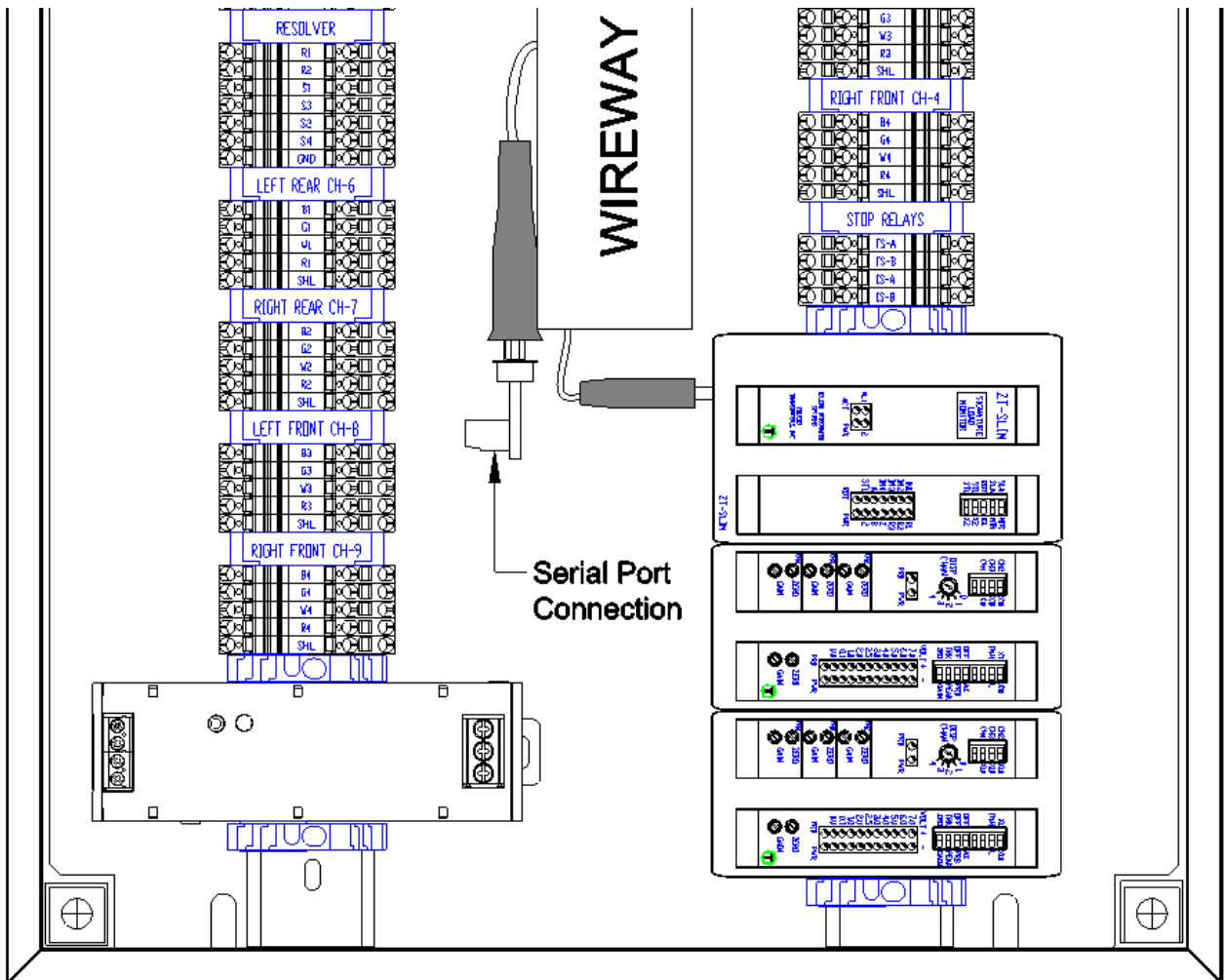


Figure 1-12: Serial Port Connection

The wiring diagram below illustrates the connection to a RS422/485 serial daisy chain PressNet network.

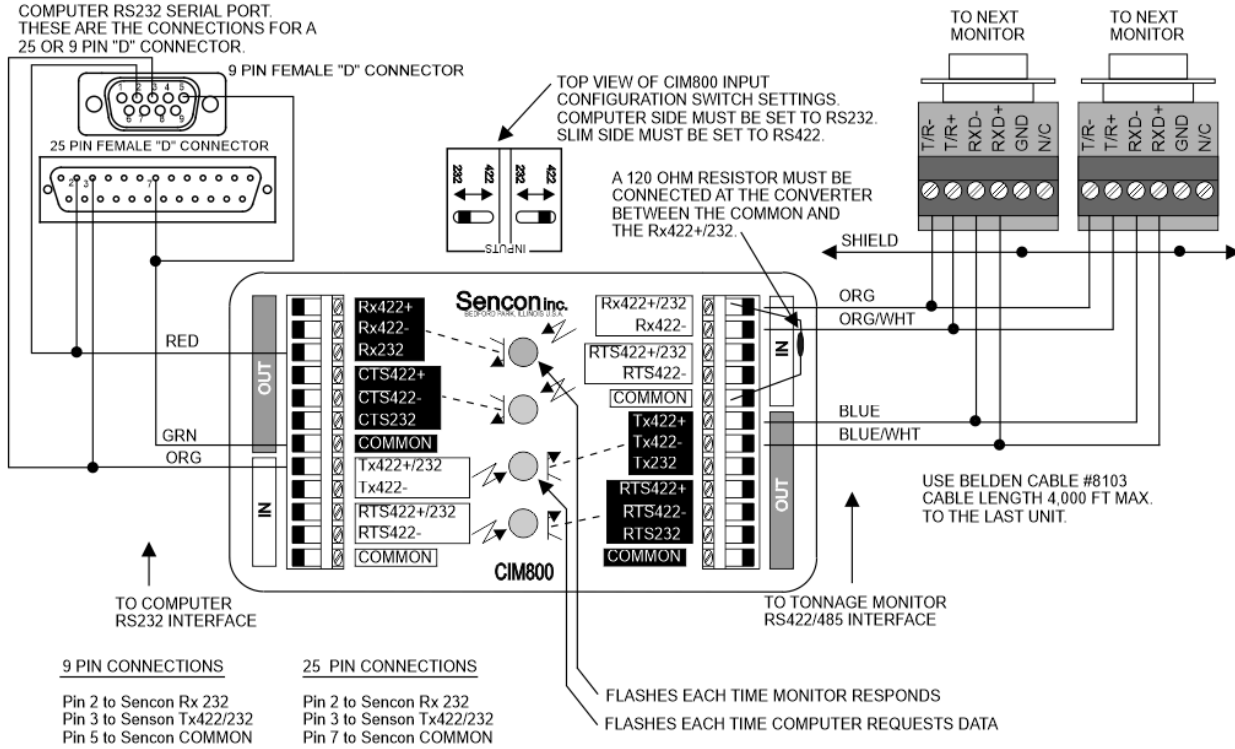


Figure 1-13: Serial PressNet Connection

➤ Operation

1. Overview

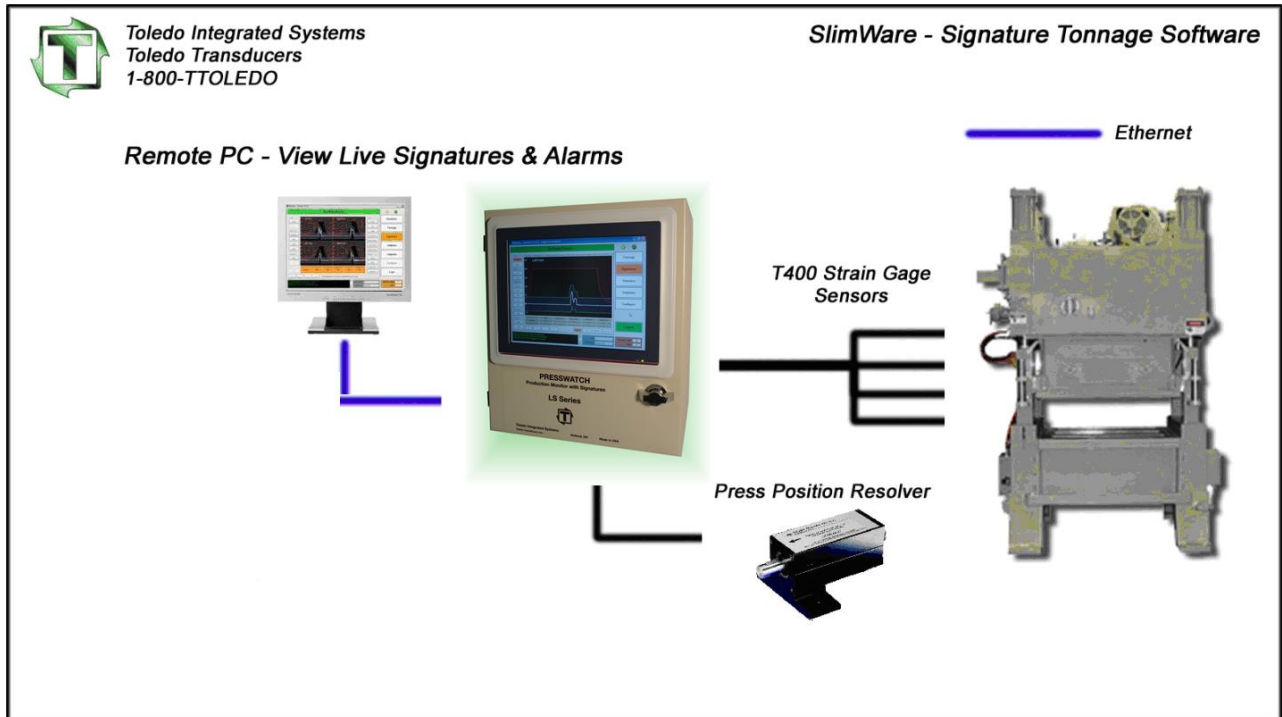


Figure 2-1: System Overview

The LS-ZT uses our exclusive SlimWare HMI (Human-Machine Interface) software. SlimWare can provide and monitor all information stored in the LS-ZT including tonnage, setpoints, alarm history and signatures (tonnage curves).

The LS-ZT is a powerful tonnage monitor that does more than protect your press and dies from hard-hits. The LS-ZT allows for 5 levels of alarms (Capacity, CCM, High & Low Setpoint, High & Low Envelope and Reverse Setpoint). Each alarm type can be enabled/bypassed and configured for top or immediate stop.

Another feature of the LS-ZT is to provide users with signature-based tonnage analysis. These signatures are extremely helpful in determining problems in the forming process. Problems can include excessive tonnage through the stroke, loose tie-rods, low nitrogen cylinders or reverse (strike-through) tonnage. SlimWare is able to monitor and control all features included with the LS-ZT unit.

2. Initial Startup

The initial communications settings are as follows:

- Communication Mode: Ethernet
- IP Address: 192.168.16.180
- Subnet Mask: 255.255.255.0
- TCP Port: 31000
- Address: 0

SlimWare will start automatically upon boot-up. It can also be manually started by either double-clicking the shortcut on the desktop or by the following:

Start >> All Programs >> Toledo Integrated Systems >> SlimWare 7

To determine if communications have been established between SlimWare and the control module, start SlimWare. If there is no communications, the yellow LED's in the upper right hand corner of the SlimWare window will not be flashing and a communications error will appear near the top of the screen as well as in the historical data box. See Figure 2-2 and Figure 2-3 for examples of a communications error.



Figure 2-2: Communication Error Alert

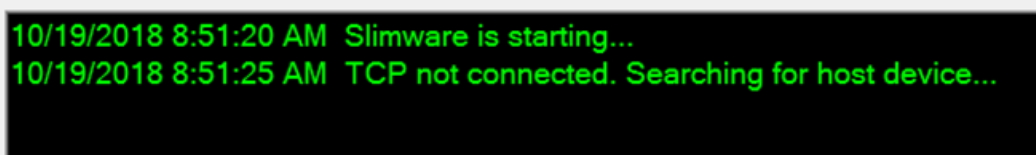


Figure 2-3: Communication Error (Historical Data Box)

See Comms/Network Configuration on page 52 for a more detailed explanation of establishing communications between SlimWare and the LS-ZT control module.

3. Main Window

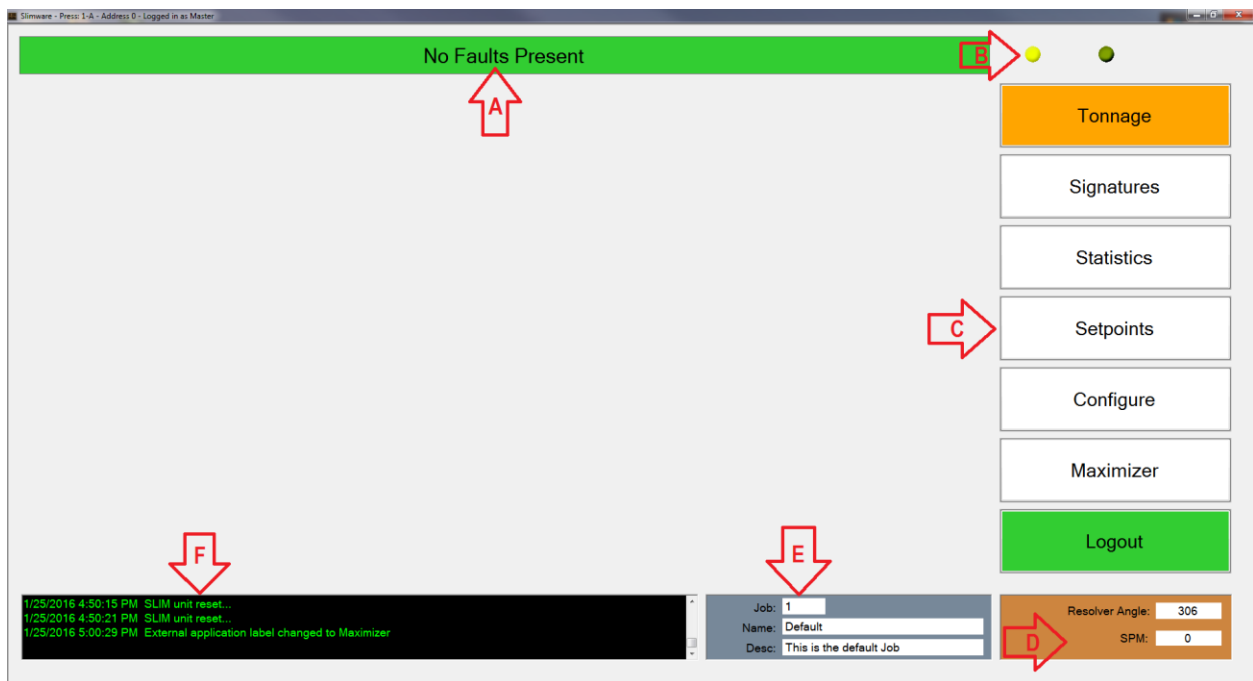


Figure 2-4: SlimWare Main Window

The main window is always displayed regardless of what page a user is on. The main window includes all of the navigation buttons, press angle, strokes per minute, job number, name and description, status bar and the historical data log. Also displayed in the top left-hand corner of the main window is the Press Name (configurable), communication address, and user permission level if logged in.

- **Status Bar (A)** – Displays the current status of the LS-ZT unit. If an alarm is detected, the status bar will flash red and white and display the highest-level alarm. To reset an alarm, a user can simply click on this bar while alarmed.
- **Indicator Lights (B)** – In the top right-hand of the SlimWare windows are two (2) yellow LED's. If these LEDs are idle, this is due to a communication error.
- **Navigation (C)** – These buttons allow the user to navigate to the various pages throughout SlimWare.
 - **Tonnage** – Pressing this button will load the tonnage page. From the tonnage page, the current peak or reverse tonnage can be viewed easily. Personnel with a setup or master password can also enable setup or learn modes from this page.
 - **Signatures** – This button will load the signature page. From the signature page, users can recall current signatures from the LS-ZT monitor or recall previously saved signatures.

- **Statistics** – Pressing this button will load the statistics page. This page displays information such as the highest load, number of high alarms and last alarm. Personnel logged in with a setup or master password can clear the alarm history from this page.
- **Setpoints** – Clicking the setpoints button will load the setpoints page. If the user is not logged in with a setup or master password, this page is read only and no setpoints can be changed. If a user is logged in with a setup or master password, setpoints such as high and low alarms and reverse tonnage setpoints can be modified.
- **Configure** – Only a master password can access the configure page. From this configure page, all personnel and hardware settings can be modified, alarms can be disabled and a tonnage calibration can be performed.
- **External Application**– This button will call an external program (such as a SCADA program). This program is declared on the configuration page. In Figure 2-4, the configured external program is the “Maximizer”, Toledo Integrated Systems’ proprietary automation program.
- **Login/Logout** – Pressing this button will load the login keypad if no user is currently logged in. Enter the correct password and the button will change to a green background indicating that a user is logged in. While logged in, if the user selects this button again, the current user will be logged out. The Login/Logout pushbutton will be hidden if SlimWare is configured to use external data management.

The LS-ZT comes shipped with the default passwords set to:

- Master: “m”
- Setup: “s”
- Operator: “o”

The passwords can be changed from the Configure → Hardware/Trigger screen.

- **Press Angle (D)** – Displays the current angle of the press if a resolver, encoder, or gray code input is used.
- **SPM – Strokes Per Minute (D)** – Displays the speed at which the press is running.
- **Job Number (E)** – Displays the current job number loaded. If enabled, a user can click on the job number box and load or create a new job.
- **Job Name (E)** – Displays the current job name loaded. If enabled, a user can click on the job name box and load or create a new job.
- **Job Description (E)** – Displays the current job description loaded. If enabled, a user can click on the job name box and load or create a new job.
- **Historical Data Log (F)** – This displays all pertinent information regarding the LS-ZT unit and any changes or alarms that occur. This log can be saved to a log file located in the user’s storage folder if “Data and Alarm Logging” is enabled from the configure page.



4. Tonnage

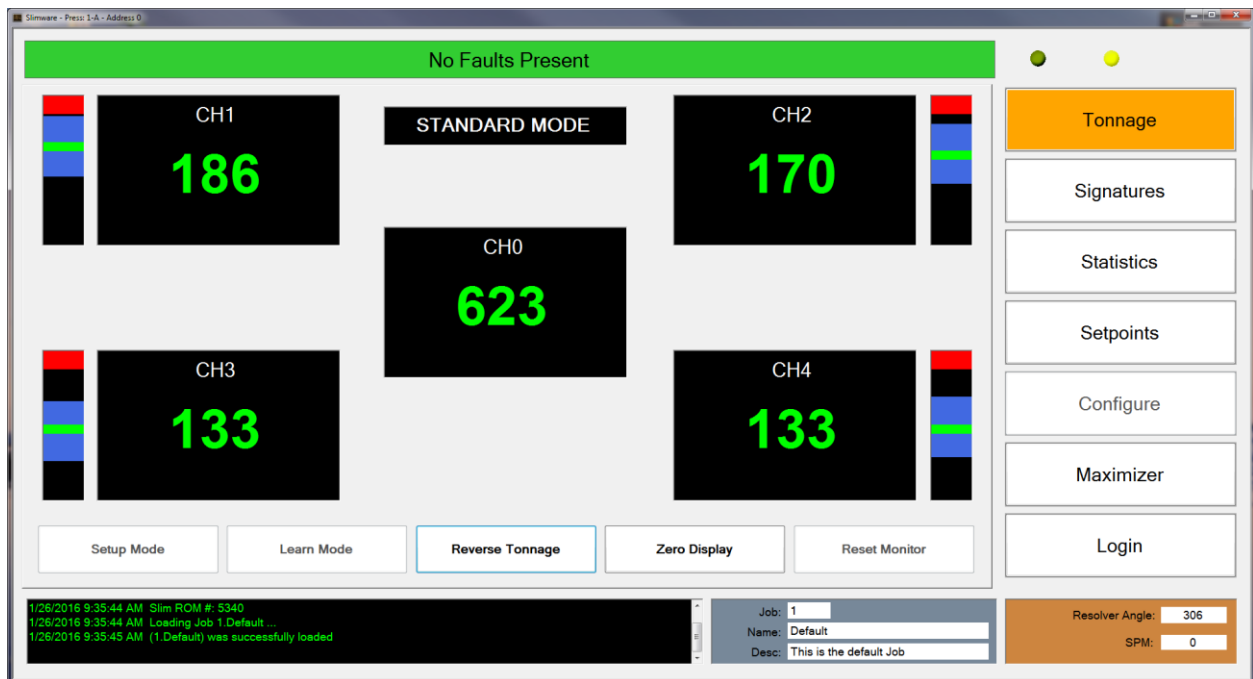


Figure 2-5: Tonnage Screen (4-Channel)

The tonnage page displays all relevant tonnage information. This information includes current tonnage, alarm status of each channel, the monitor mode (setup, learn or normal) and a graphical representation of each corner's high/low setpoint windows with regards to current tonnage.

Figure 2-5 shows a typical four (4) channel LS-ZT monitor. Each corner displays the current tonnage and will turn red if an alarm is flagged for that channel.

I. Setup Mode

- *[Requires Operator, Setup, or Master password]*
- Press the "Setup Mode" button in the bottom left-hand corner to place the LS-ZT unit into setup mode. While in setup mode, the press will be able to run and the following alarms will be bypassed.
 - High and Low Envelope Alarms
 - High and Low Setpoint Alarms
 - Reverse Alarms

The setup mode button is only available when a user is logged in. The monitor should only be placed in setup for the beginning or end of runs. Setup mode is not recommended for normal production use, as several alarm modes are bypassed.

II. Learn Mode

- *[Requires Operator, Setup, or Master password]*
- Press the “Learn Mode” button in the bottom left-hand corner to place the LS-ZT unit into learn mode. Learn mode will run for eight (8) strokes. During these eight strokes, the LS-ZT unit will calculate new high and low setpoints, as well as a new benchmark for each channel.
- When the learn mode button is pressed, a dialogue box will appear prompting the user to confirm that learn mode is desired. This is to prevent users from accidentally entering learn mode and learning new benchmarks.
- The LS-ZT unit will come out of learn mode automatically after eight (8) strokes.
- The learn mode button is only available when a user is logged in, and when autoset mode is enabled.

III. Reverse Tonnage

- Press the “Reverse Tonnage” button to display the reverse tonnage for each channel.
- Even with reverse tonnage displayed, the monitor will function as in normal mode; all alarms will be monitored. This button is available for all users.
- To return to normal mode, simply press the “Reverse Tonnage” button and the normal tonnage will be displayed.

IV. Zero Display

- Press the “Zero Display” button to clear the displayed tonnage.
- This is mostly used in the initial setup of the LS-ZT and SlimWare to make sure communications are correct and the tonnage values are updating properly.

V. Reset Monitor

- *[Requires Setup or Master password, Operator option available]*
- Press the “Reset Monitor” to reset any alarms.
- The “Reset Monitor” button by default is only available to setup or higher-level passwords, however it can be enabled for Operators if “Operator Personnel Reset Alarms” is enabled on the configure page (See Section 8).
- Alarms can also be reset by pressing the channel which is alarmed or pressing the flashing status bar at the top of the screen (subject to password authorization).



VI. Bar Graphs

- The bar graphs next to each channel display the relationship between the current tonnage and the high and low setpoint window.
- This graph can be changed to display either the current tonnage with regards to the high and low setpoint window, or the benchmark with regards to the percentage variation of each hit. The display is determined by which autosest mode (Capacity or Benchmark) is selected in the configuration page.

VII. Mode Display

- Just above the total tonnage is the mode display box. This displays what type of mode the monitor is in. These modes can be any of the following:
 - Standard (Shown in Figure 2-5)
 - First Level
 - STI
 - TFP
 - Pendulum
 - Multi-Strike
- The tonnage modes can only be changed from the configuration page. (To learn more about each type of mode, refer to the configuration section.)

VIII. Alarms

- If the LS-ZT detects an alarm, the status bar will begin flashing red and white and the alarmed channel will turn red. To reset any of these alarms, first find the cause for the alarm. Once the cause has been corrected, press either the alarmed corner, the status box or the "reset monitor" pushbutton in the bottom right-hand corner of the tonnage page (subject to password authorization).



5. Signatures

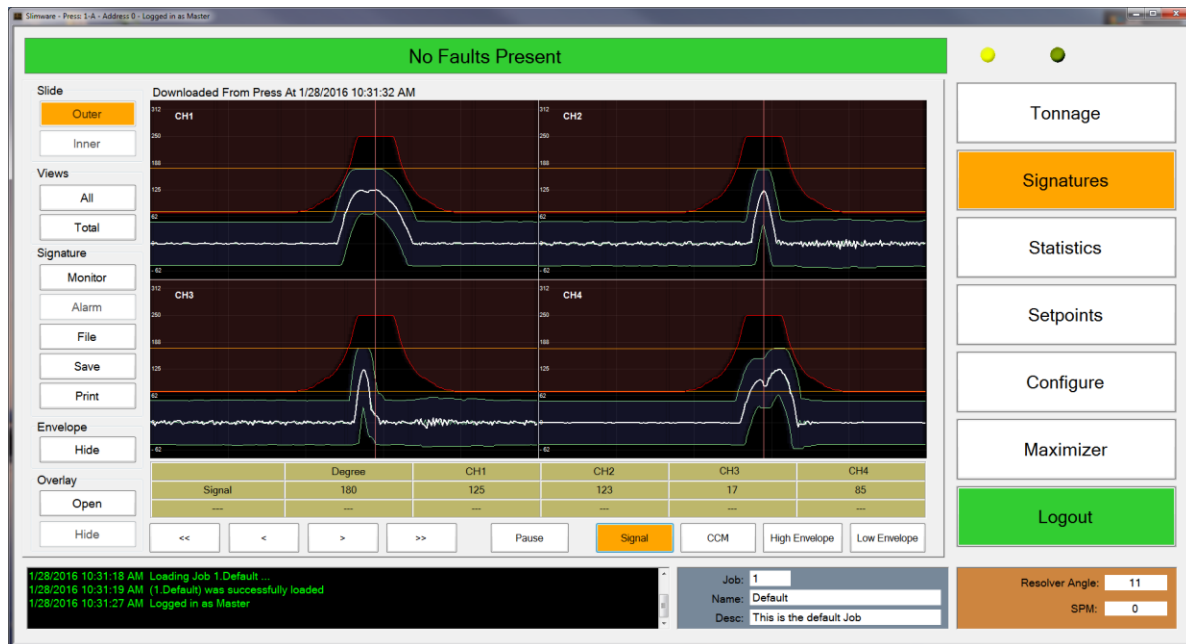


Figure 2-6: Signature Screen (4-Channel)

The signature page is used to display historical or live signatures from the LS-ZT monitor. To navigate to the signature page, simply press the “Signatures” button on the right side of the main screen.

Figure 2-6 shows a typical four (4) channel signature with enveloping. Operators can analyze the signatures from each stroke and determine if there are problems such as excessive tonnage early or late in the stroke.

I. Slide

- The slide buttons determine whether to display signatures for the inner or outside slide, or both. If the number of channels is set to 2 or 4, the inner slide option is disabled.
 - Outer – Displays the outer slide signature (Channels 0-4)
 - Inner – Displays the inner slide signature (Channels 5-9)

II. Views

- The default view of the signatures page is all 4 corners shown in normal viewing mode. Clicking on one of the corner signature windows will display an enlarged view of the corner. Click the enlarged view to return to the 4-corner view. In addition, the following buttons may be used to provide other viewing options.

- All – This view will overlay all four corners into one window. This is best used to view differences between channels. Click the signature window to return to the 4-corner view.
- Total – This view shows the total for the selected slide(s). Click the signature window to return to the 4-corner view.

III. Signature

- The signature group box contains the controls for polling, retrieving from file or saving to file, a signature.
 - Monitor – Select this button to poll the LS-ZT for the most recent 25 signatures.
 - Alarm – Select this button to poll the last alarmed signature.
 - File – Selecting this button will load a file dialogue box. From here, select a .SIG, .SWS, or .SWSX file to open and view in the signature viewing window. When a signature is loaded, the file path will be shown above the viewing window.
 - Save – Select this control to save the loaded signature to a file.
 - Print - Use the print function to print out any signatures or overlays shown in the viewing window. The default print setting is landscape mode. When printing a signature, the current signature view will be printed.

Note: Before you can print, one of the following must be true:

 - The LS-ZT Panel PC must be connected to and configured for the network and a network printer must be properly setup.
 - The LS-ZT Panel PC must be connected to a local USB printer and the printer's drivers must be properly installed.

IV. Envelope

- This option enables an operator to hide or display envelope and benchmark signatures. This option is only available if enveloping is enabled.

V. Overlay

- Once a signature is loaded, the overlay controls will become enabled. Use overlays to compared previous “good” signatures to current signatures.
 - Open – Selecting this control will load a file dialogue box. From here, select a .SIG, .SWS, or .SWSX file to load as an overlay. The overlay will be a light gray color in each channel.
 - Hide – Once an overlay is loaded, select the “Hide” control to hide the overlay.

VI. Detail and Scan

- While viewing live signatures the signature will continually update. To examine a signature more closely press the Pause button to stop the screen from updating. SlimWare will continue to update all critical data in the background.



- To view the details of each signature (peak, CCM, envelope and capacity at each degree), use the four (4) buttons in the bottom left-hand corner of the signature window. A vertical red line will appear through the signature viewing area. To change the degree, use the four (4) navigation buttons mentioned above.
- The details display is updated if the view or angle is changed. When all four corners are displayed, the displayed details include:
 - Degree
 - Channel 1 Signal Value
 - Channel 2 Signal Value
 - Channel 3 Signal Value
 - Channel 4 Signal Value

If the total or any corner is displayed, the values include:

- Degree
- Load Value
- CCM Value
- High Envelope Value
- Low Envelope Value
- The current loaded signature filename or timestamp is shown above the signature window. If the signature has been downloaded from the press, this path will include the timestamp of when the signature was downloaded. If the signature has been recalled from a file, the file path will be shown.
- All signatures and overlays are saved as .SWSX files.

6. Statistics

The statistics page is used to detail the number and types of alarms that have been recorded. From this page, any user can view the various alarms for each channel.



Figure 2-7: Statistics Screen

Figure 2-7 shows a typical four (4) channel LS-ZT unit's historical statistics. If the user is not logged in with a setup or master password, these statistics are "read only". If logged in with a setup or master password, these values can be cleared by pressing the "C" button for the corresponding alarm row.

- **Highest Load** – Displays the highest recorded tonnage per channel
- **Lowest Load** – Displays the lowest recorded tonnage per channel
- **Last Alarm** – The last recorded alarm (any type) per channel
- **Last High Alarm** – The last recorded high alarm per channel
- **Last Low Alarm** – the last recorded low alarm per channel
- **# Capacity Alarms** – The number of capacity alarms recorded per channel
- **# CCM Alarms** – The number of CCM alarms recorded per channel
- **# High Alarms** – The number of high alarms recorded per channel
- **# Low Alarms** – The number of low alarms recorded per channel
- **# Reverse Alarms** – The number of reverse alarms recorded per channel

7. Setpoints

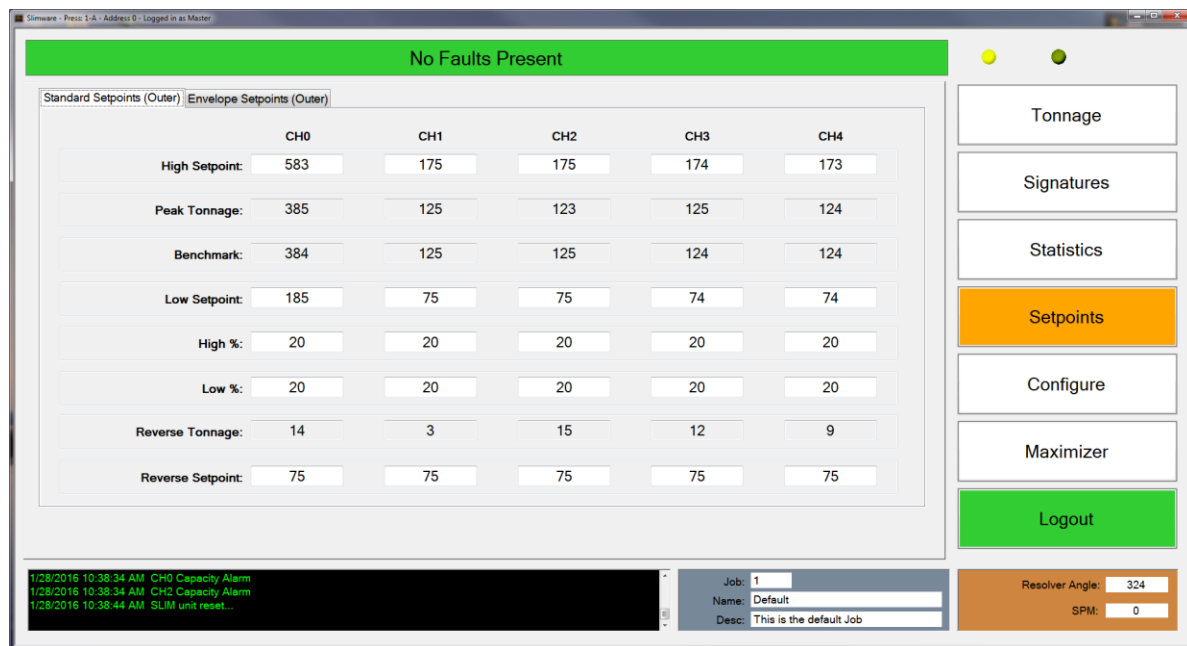


Figure 2-8: Standard Setpoints Screen (4-Channel)

The setpoints page displays and configures the LS-ZT unit's alarm setpoint values. From this page, setpoints such as high and low setpoints, high and low benchmark percentages and reverse setpoints can be altered. Capacity settings are "read only" on this page and can only be changed from the configure screen.

Figure 2-8 shows a typical four (4) channel LS-ZT unit's setpoint screen. If the user is not logged in with a setup or master level password, these setpoints are "read only". If a user is logged in with a setup or master password, these values can be changed.

I. Standard Setpoints

A. High Setpoint

- The high setpoint value will stop the press when peak tonnage is above this value.
- The high setpoint value is stored with each job, so each job can have a different high setpoint value.
- A high setpoint alarm can be configured for an immediate stop or top stop (See page 51).

B. Peak Tonnage

- Peak tonnage is the current tonnage that the LS-ZT has recorded. This value is specific to the monitor mode (Standard, First Level, Etc...).
- Peak tonnage is read only and cannot be changed.

C. Benchmark

- The benchmark value is the desired peak tonnage per corner. The benchmark value is created by putting the monitor into learn mode.
- The benchmark tonnage is read only and can only be changed by putting the LS-ZT into learn mode.
- The benchmark tonnage is stored with each job, so each job can have a different benchmark tonnage.

D. Low Setpoint

- The low setpoint value will stop the press when peak tonnage is below this value.
- The low setpoint value is stored with each job, so each job can have a different low setpoint value.
- A low setpoint alarm is always top stop.

E. High Percentage

- The high percentage value is used in conjunction with learn mode. This value is used to determine the new high setpoint value.
- While in learn mode, the LS-ZT will multiply either the capacity or new benchmark value (configurable) by the high percentage value. The difference is then added to the benchmark value and the high setpoint value is established.
- The high percentage value is stored with each job, so each job can have a different high percentage value.

F. Low Percentage

- The low percentage value is used in conjunction with learn mode. This value is used to determine the new low setpoint value.
- While in learn mode, the LS-ZT will multiply either the capacity or new benchmark value (configurable) by the low percentage value. The difference is then deducted from the benchmark value and low setpoint value is established.
- The low percentage value is stored with each job, so each job can have a different low percentage value.



G. Reverse Tonnage

- Reverse tonnage is current reverse tonnage that the LS-ZT has recorded.
- Also called “Snap Thru” tonnage, this is tonnage that is applied to the press once the punch stamps through the part.
- Reverse tonnage is read only and cannot be changed.

H. Reverse Setpoint

- The reverse setpoint value will stop the press when reverse tonnage is beyond this value.
- The reverse setpoint value is stored with each job, so each job can have a different reverse setpoint value.
- A reverse setpoint alarm can be configured for an immediate or top stop (see page 51).

II. Envelope Setpoints

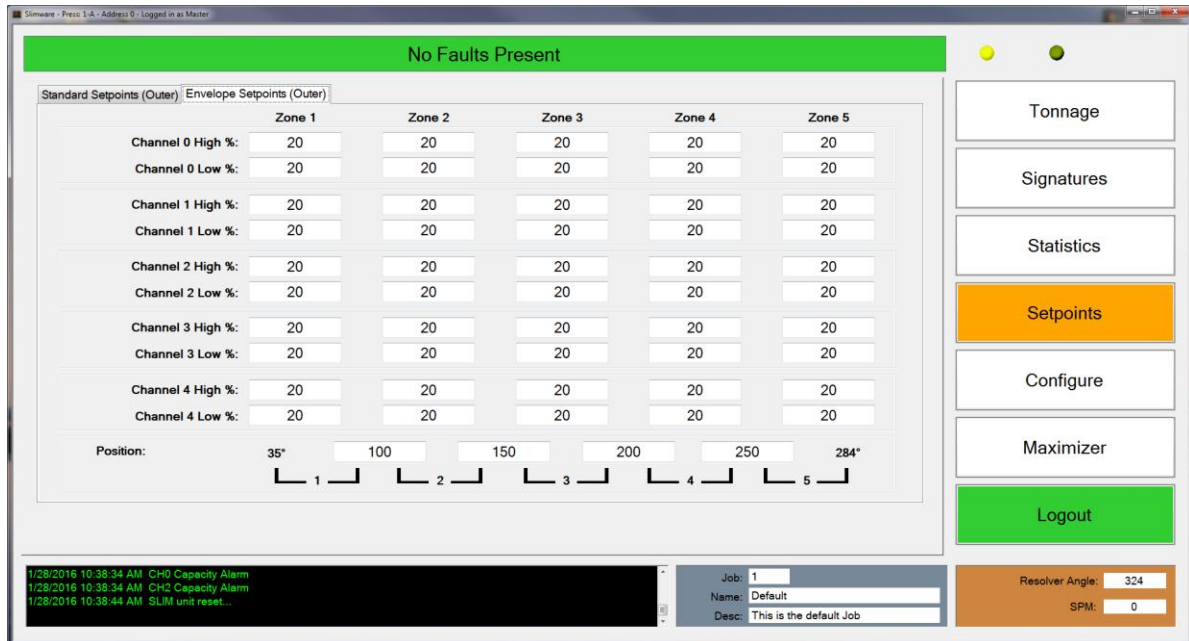


Figure 2-9: Envelope Setpoints Screen (4-Channel)

Enveloping allows for a form-fitting curve through the entire press stroke. Enveloping goes above and beyond a simple high and low setpoint by calculating different high and low limits throughout each degree of the press stroke.

With the LS-ZT, five (5) envelope zones can be calculated allowing for different high and low tolerances throughout certain windows. As seen in Figure 2-9, the enveloping setpoints for each zone are set by a degree-based value. Each window can be configured by entering the desired degrees. To bypass a zone, simply enter the same value as the previous zone.

A. Channel High and Low %

- These are the percentage values above and below the benchmark used to calculate the high and low enveloping limits in each specified zone. These values are used during learn mode.

B. Position

- The LS-ZT allow for up to five (5) zones to be calculated throughout the press stroke. Enter the desired windows in these textboxes.

8. Configure

I. Settings

There are 5 total configuration pages. From these pages, a user logged in with a master password can access such features as tonnage calibration, user settings, communication settings, capacity values and alarm bypass settings.

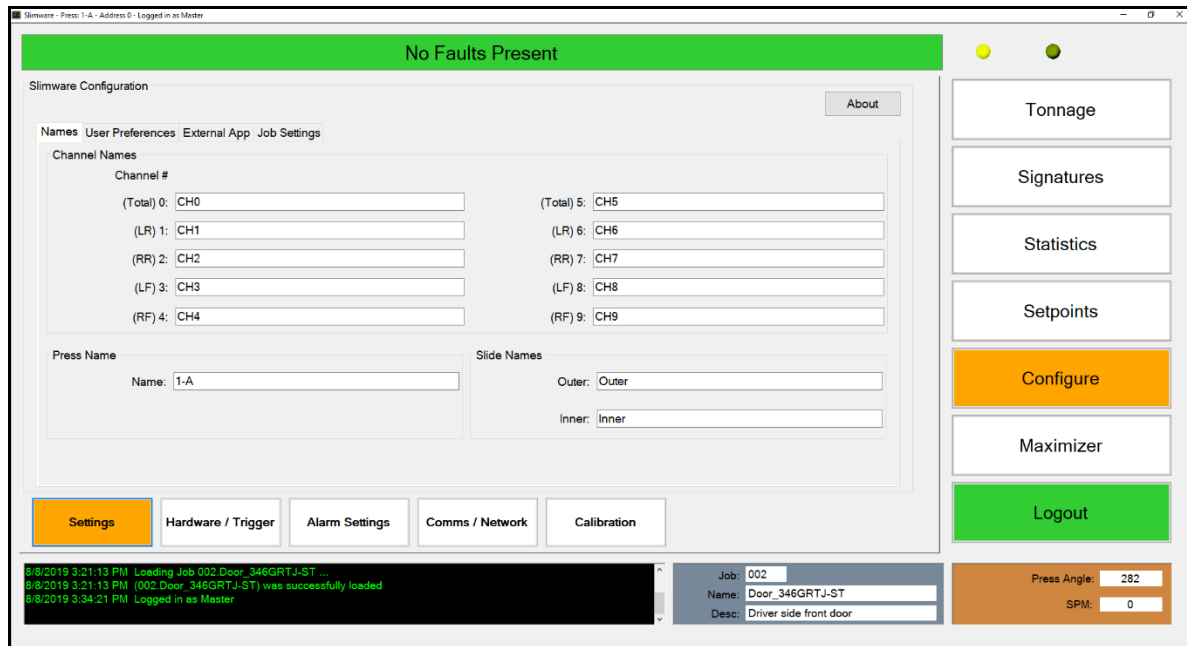


Figure 2-10: Configure Settings - Names Screen

Figure 2-10 shows the initial configure page (Settings). The Settings screen is split up into four different tabs (Names, User Preferences, External App, and Job Settings). Use the buttons near the bottom of the configuration window to navigate to the different configuration menus.

- **Names**
 - **Channel Names** – Each channel can be configured for a specific name. Type in the desired name and press “Enter” to save the name to the desired corner. The default names are shown in Figure 2-10.
 - **Press Name** – Enter the name of the press on which the LS-ZT unit is installed. This name will be displayed in the SlimWare title bar. You may need to restart SlimWare after the press name is changed.
 - **Slide Names** – Each slide can be configured for a specific name. Type in the desired name and press “Enter” to save the name to the desired corner.

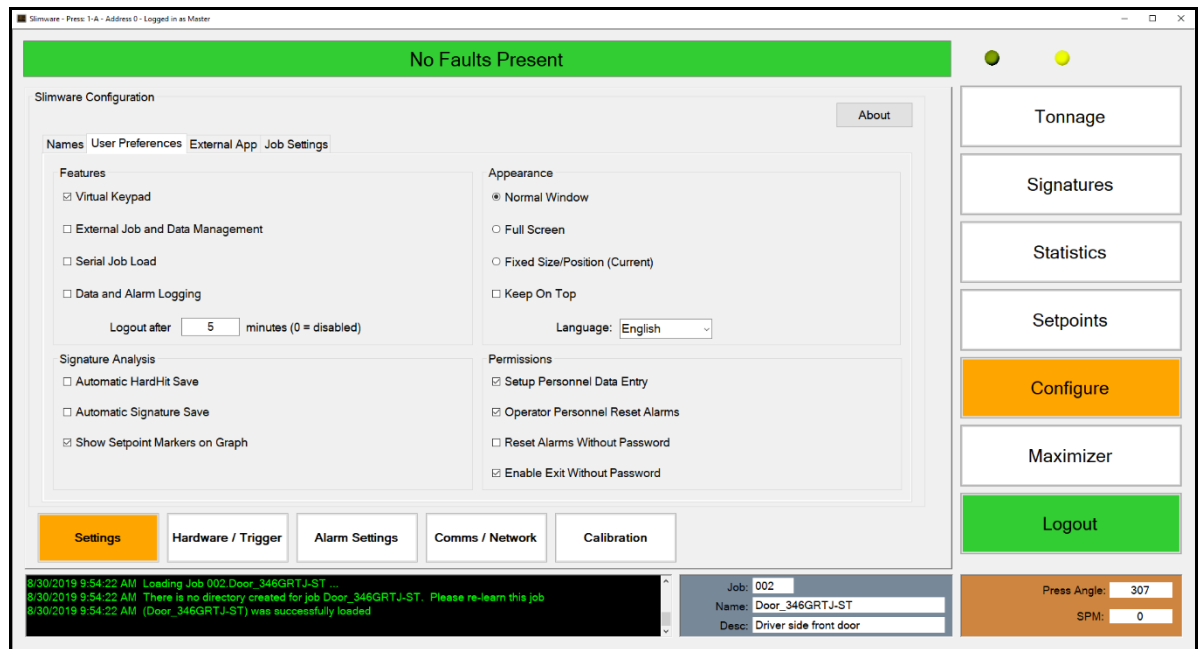


Figure 2-11: Configure Settings - User Preferences Screen

- User Preferences

- Features

- **Virtual Keypad** – Enabled by default, this calls a keypad to the foreground when an alpha or numeric entry is required. This is to be used when a mouse and keyboard is not available (touch-screen applications). If a keypad is not desired, uncheck this option.
 - **External Job Data and Management** – This allows for third-party program to be used with SlimWare for functions such as automated job loading. For example, if using a SCADA program, this option would be checked. Checking this option will also enable the Live Data Output feature. See sections 10 and 11 for more information.
 - **Serial Job Load** – Checking this option allows a job to be loaded using a serial command from another device such as a PLC.
 - **Data And Alarm Logging** – Checking this option will log all events from the event viewer window to a text file. This file is stored in the program installation folder (default location: C:\ProgramData\Toledo Integrated Systems\SlimWare 7\). If this log file becomes larger than 2GB, the oldest record will be deleted and the most current records will be added.
 - **Logout Time** – The number of minutes of inactivity that SlimWare will wait before automatically logging out the current user. Setting this to 0 will disable the auto-logout feature.

- **Appearance**
 - **Normal Window** – Selecting this option will allow the user to change the size and position of SlimWare like any other window (click-and-drag, etc.). It is recommended to restart SlimWare after this option is changed.
 - **Full Screen** – Selecting this option will cause SlimWare to take up the entire screen, including the taskbar. It is recommended to restart SlimWare after this option is changed.
 - **Fixed Size/Position (Current)** – Selecting this option will cause SlimWare to open at the current size and position every time it starts. Before selecting this option, set the appearance to Normal Window, adjust SlimWare to the desired location and size, then select Fixed Size/Position. It is recommended to restart SlimWare after this option is changed.
 - **Keep On Top** – When enabled, SlimWare will always be the top-most window. Disable this if you would like SlimWare to be able to go to the background.
 - **Language** – SlimWare has the capability of running in three different languages (English, Spanish and Simplified Chinese). Note that SlimWare will need to be restarted after this option is changed.

- **Signature Analysis**
 - **Automatic HardHit Save** – When checked, SlimWare will automatically save the incoming alarm signatures to the HardHit directory.
 - **Automatic Signature Save** – This option allows for SlimWare to automatically request and save a signature every 2 seconds.
 - **Show Setpoint Markers On Graph** – Checking this option will display the high and low setpoint markers on the signature(s). These markers are designated by yellow horizontal lines on the graph.

- **Permissions**
 - **Setup Personnel Data Entry** – By checking this, setup personnel is allowed to enter data including:
 - High Setpoints
 - Low Setpoints
 - Benchmark Percentage Setpoints
 - Enveloping Setpoints
 - Reverse Setpoints
 - **Operator Personnel Reset Alarms** – This option allows users logged in as an operator to reset alarms. If operators should not be allowed to reset alarms, uncheck this option.
 - **Reset Alarms Without Password** – Checking this option will allow alarms to be reset regardless of the level of user logged in or when no one is



logged in. Setting this option will override the operator personnel reset alarm option.

- **Enable Exit Without Password** – Checking this option allows SlimWare to be closed, regardless of the login status. When unchecked, the user must be logged in with the master password before SlimWare can be closed.



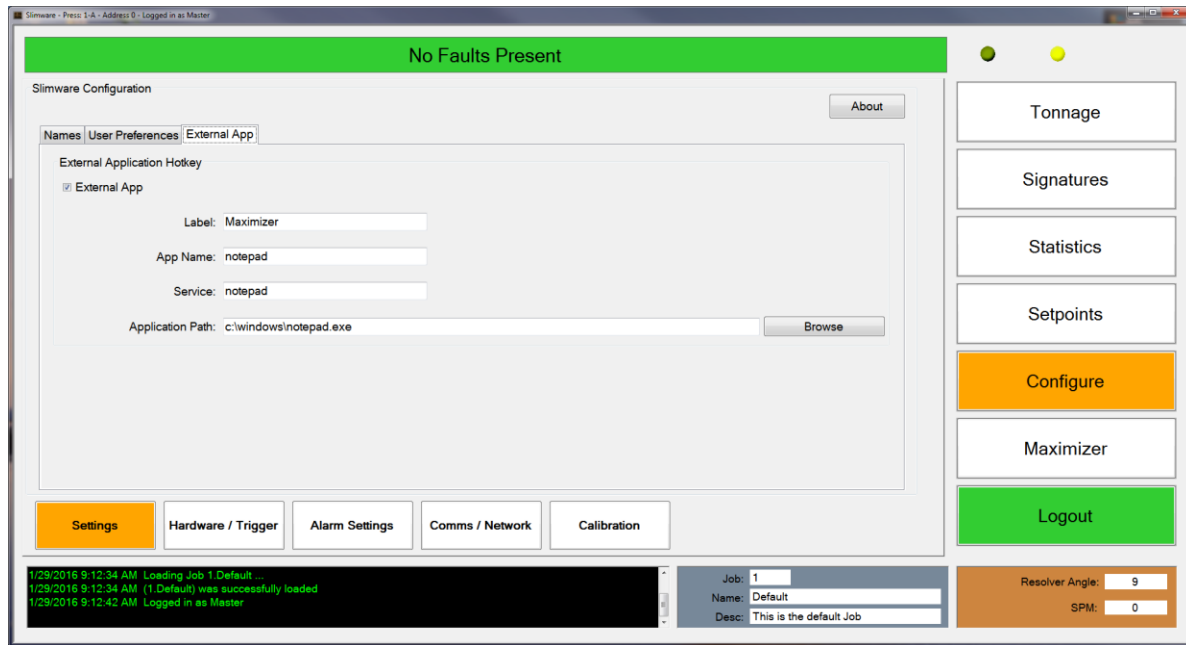


Figure 2-12: Configure Settings - External App Screen

- **External Application Hotkey**
 - **External App** – Checking this option will enable the external application button above the Login/Logout button. This button is used to call a third-party program to the front.
 - **Label** – Input the name to be shown on the external application button.
 - **App Name** – The name of the external application. This name can be seen in the taskbar when the program is running.
 - **Service** – This is the external applications service name. *The service name can be seen by right clicking on the taskbar and selecting “Task Manager”. On the services tab of the task manager, find the external applications service name.*
 - **Application Path** – This is the path to the .exe of the external application. Use the browse button to open a dialogue box to browse to the external program executable.

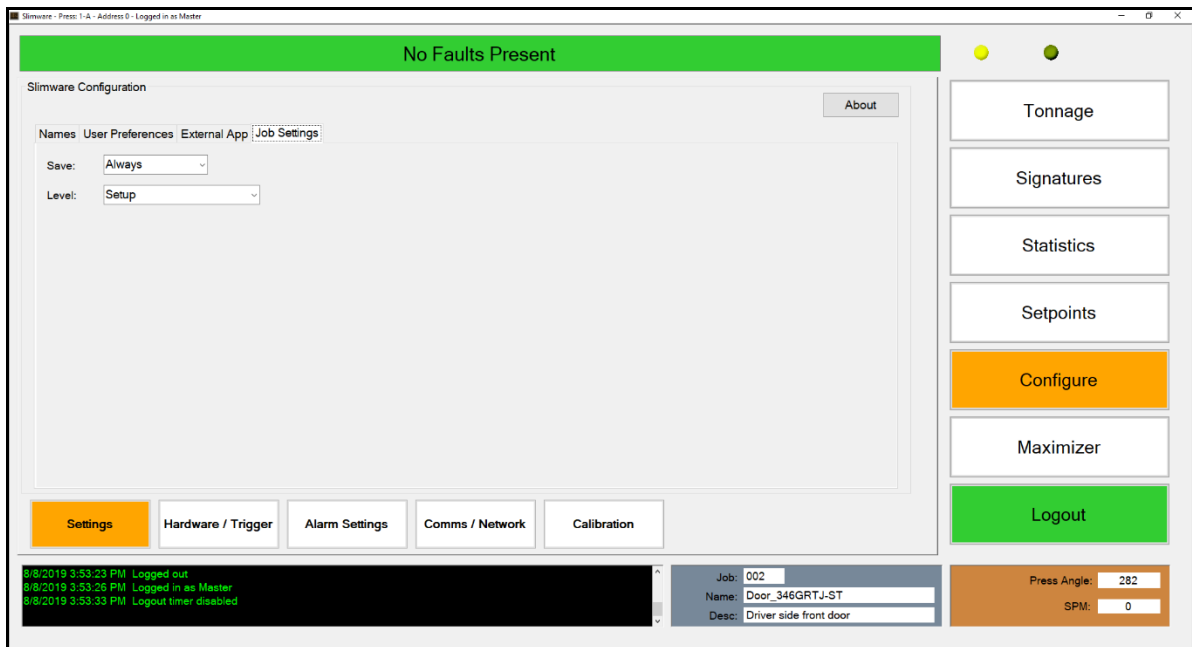


Figure 2-13: Configure Settings - Job Settings Screen

- **Job Settings**
 - **Save Changed Setpoints To Job**– When changing setpoints (standard or enveloping) to a loaded job, the changes can be:
 - Always saved
 - Prompted before saving
 - Never saved (dismissed)
 - **Minimum Login Level Required For Job Changes** – As an extra level of security, a login level can be required to perform job changes. Select the lowest level of user desired for job changes from this list. All levels above the selected level will also be allowed to perform job changes.

II. Hardware / Trigger

The hardware/trigger page contains the basic tonnage monitor features such as the monitor type, number of channels, corner capacity, type of position instrument, decimal place precision and enveloping mode. The hardware/trigger page is split up into three different tabs (Hardware Configuration, Capacity, and Trigger).

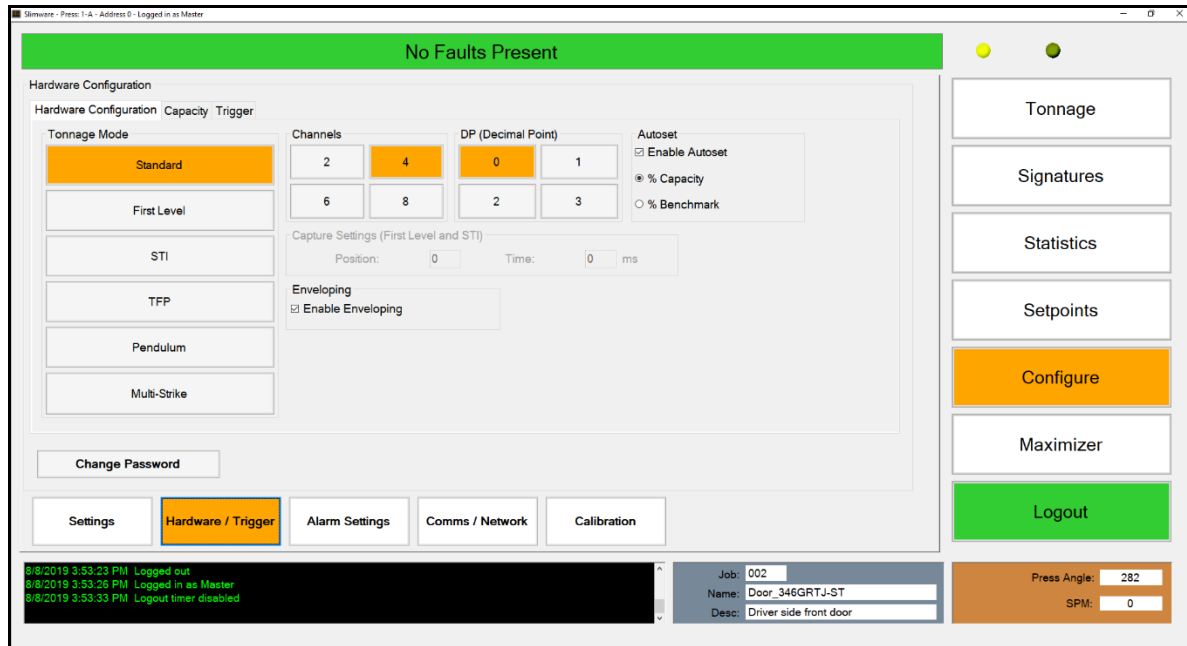


Figure 2-14: Configure Hardware/Trigger - Hardware Configuration Screen

- **Hardware Configuration**
 - **Tonnage mode**
 - **Standard** – The normal mode of operation. For most applications, this is the desired mode. Unless otherwise noted, use this tonnage mode.
 - **First Level** – In first level mode, the load is the peak loading which occurs during the portion of the stroke from the initial threshold crossing until the time point is reached.
 - **STI** – Designed for double-action stamping presses. This mode allows for the inner and outer slide tonnage to be monitored with only mounting four (4) sensors.
 - **TFP** – Designed for a specific type of transfer press system with six (6) columns, where center columns are shared by the two slides.
 - **Pendulum** – Used by servo presses. This mode allows tonnage gathering for the non-cyclical, forward-backward, short stroke motion of servo presses. Each short stroke produces a part.

- **Multi-Strike** – Used by servo presses. Similar to Pendulum mode, but several strikes are used to produce a single part.
- **Channels**
 - The number of channels (sensor inputs) the LS-ZT unit is to monitor, normally four (4).
- **DP (Decimal Point)**
 - Sets the digits to the right of the decimal point to be displayed.
- **Autoset**
 - **Enable Autoset (Capacity)** – When enabled, the monitor will calculate all percentages based on press capacity. (The percentages can be configured from the setpoints page).
 - **Enable Autoset (Benchmark)** – When enabled, the monitor will calculate all percentages based on the obtained benchmark value calculated during learn mode. (The percentages can be configured from the setpoints page).
- **Capture Settings**
 - **Position** – Used with first level and STI tonnage modes, this is the position (resolver, encoder, or gray code triggering) that the load will be captured.
 - **Time** – Used with first level and STI tonnage modes, this is the amount of time the peak hold circuit is monitored once the threshold tonnage has been crossed (threshold triggering) or the probe input signal is read (probe triggering).
- **Enveloping**
 - **Enable Enveloping** – Check this to enable enveloping mode. Enveloping provides a window throughout the press stroke that monitors tonnage from 35 to 284 degrees. Applies to resolver, encoder, or gray code triggering only.

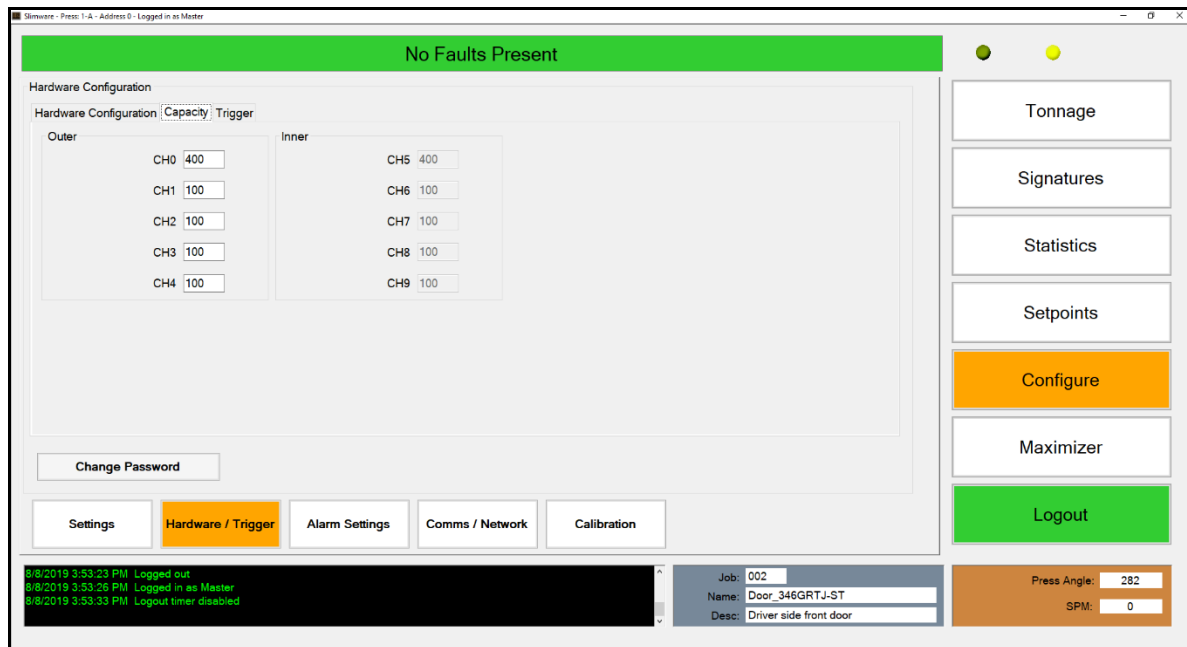


Figure 2-15: Configure Hardware/Trigger - Capacity Screen

The capacity settings for the unit should be set during initial startup and should not be changed thereafter. Changing the capacity will affect all other setpoints.

- **Capacity**

- **Outer** – The rated maximum tonnage for the outer slide’s total and each corner.
 - For standard single-action presses, this is where the press’s rated capacity is entered.
 - For double-action presses, this is where press’s rated capacity for the outer slide is entered.
 - Each corner’s capacity is typically the slide’s total divided by the number of channels for that slide. When the total capacity is entered, SlimWare will automatically calculate the capacities for the individual corners.
 - Each corner can have a different capacity assigned if required (not typical).
- **Inner** – The rated maximum tonnage for the inner slide’s total and each corner.
 - For double-action presses, this is where the press’s rated capacity for the inner slide is entered. Not used for single-action presses.
 - Each corner’s capacity is typically the slide’s total divided by the number of channels for that slide. When the total capacity is entered, SlimWare will automatically calculate the capacities for the individual corners.
 - Each corner can have a different capacity assigned if required (not typical).

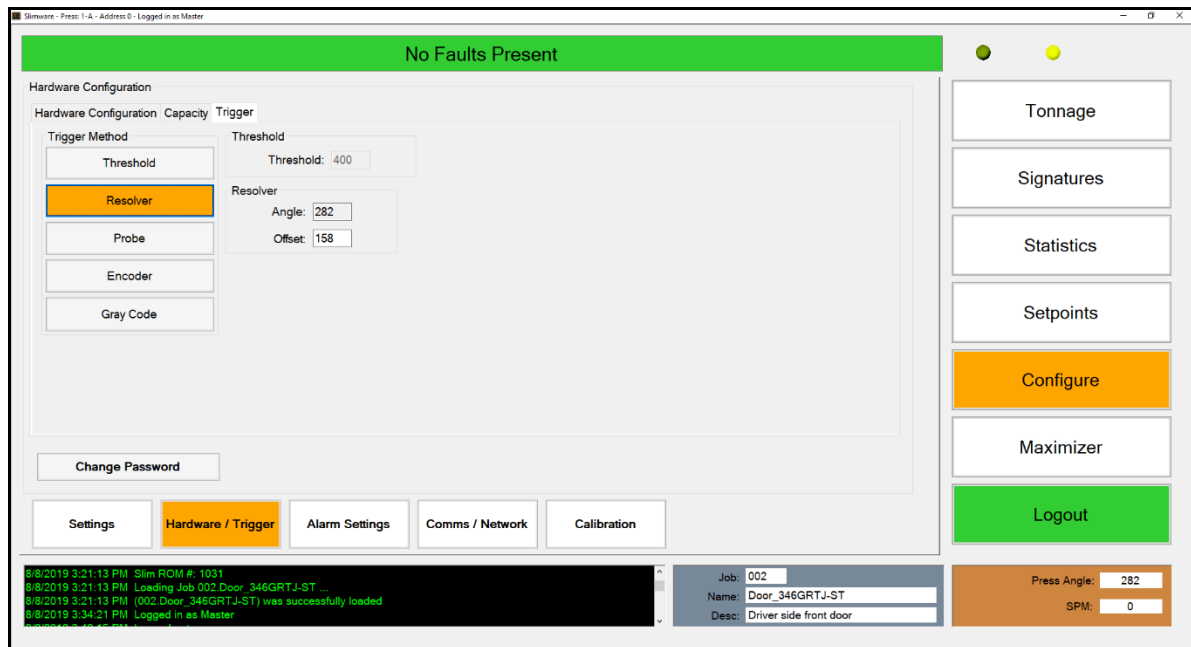
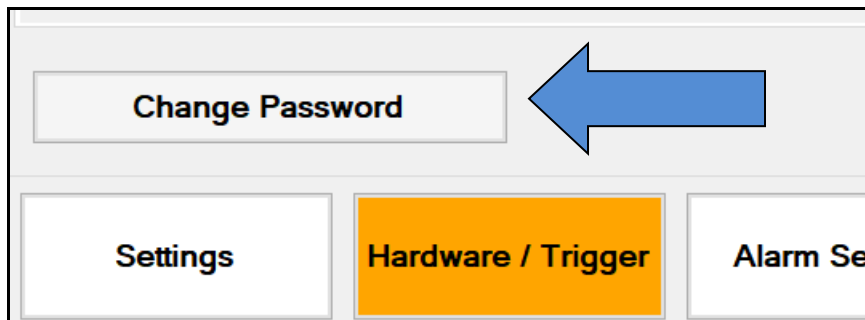


Figure 2-16: Configure Hardware/Trigger - Trigger Screen

- **Trigger**
 - **Trigger Method**
 - **Threshold** – Setting the trigger to threshold will allow a user to enter a desired total tonnage value at which the monitor should start monitoring. For example, if 100 tons is entered, the monitor will not begin its peak hold circuit until 100 total tons has been obtained.
 - The maximum press speed is 400 spm with a threshold trigger.
 - Signatures are not available when using a threshold trigger.
 - The threshold entry field is the total tonnage value (CH0) at which the LS-ZT will start to monitor. If the threshold method is not selected, this field is not changeable.
 - **Resolver** – The standard method. Use this method when a resolver is wired into the resolver input on the LS-ZT.
 - The angle field is read-only and displays the current resolver/encoder/gray code position.
 - The maximum press speed with a resolver trigger is 900 spm.
 - The offset entry field allows users to enter the desired offset value to obtain the correct angle. Valid offset values range from 0-359.
 - **Probe** – The probe method can be wired so that an input signal can trigger the monitor to start and stop monitoring.
 - The maximum press speed with a probe trigger is 2000 spm.
 - Signatures are not available when using a probe trigger.

- **Encoder** – Similar to resolver method. Use this method when an incremental encoder is wired into the encoder input on the LS-ZT control module.
 - The angle field is read-only and displays the current resolver/encoder/gray code position.
 - The maximum press speed with an encoder trigger is 900 spm.
 - The offset entry field allows users to enter the desired offset value to obtain the correct angle. Valid offset values range from 0-359.
- **Gray Code** – Accepts a gray code logic signal. Use this method when a gray code signal is wired into the IN(x) inputs on the LS-ZT control module.
 - The angle field is read-only and displays the current resolver/encoder/gray code position.
 - The maximum press speed with a gray code trigger is 900 spm.
 - Gray code is the absolute position of the press. Therefore, no offset value is needed.
- **Change Password** – Press the button to change the passwords for master, setup or operator users. Select the desired type of user from the top radio buttons and select “Enter” once a new password has been entered.



III. Alarm Settings

Alarm settings can be configured from the Alarm Settings screen (see example below). Each type of alarm can be configured for a specific type of stop including top or immediate stop. Alarms can also be bypassed on a channel-by-channel basis.



Figure 2-17: Configure Alarm Settings Screen (4-Channel)

For example, in the above screen shot, the high setpoint and reverse alarms are bypassed, while Capacity, CCM, Low setpoint, High and Low enveloping alarms are active. Immediate stops are declared for Capacity and CCM alarms, while top stops are declared for the remaining alarms.

To bypass and/or change the alarm type, click on the button to scroll through the available options. When any type of alarm or stop is changed, an Apply and Cancel button will appear in the bottom right-hand corner of the configuration screen. To save the alarm setting changes, press the “Apply” button.

For an eight (8) channel unit, toggle between the slides by using the two tabs near the top of the screen. As with the four (4) channel unit, each slide and channel number can be configured independently.

The alarm configuration will affect the function of the LS-ZT’s two (2) shutdown relays when the corresponding fault occurs.

Top Stop Fault	>>	TS-A/B opens at 290°	IS-A/B remains closed
Immed. Stop Fault	>>	TS-A/B opens immediately	IS-A/B opens immediately

IV. Comms / Network

The Comms (communication) / Network screen contains all the settings pertaining to the communication between SlimWare and the LS-ZT control module, hard-hit software connections and opc server and client tag definitions. Once configured during setup, the communication and network settings should not be adjusted unless communications have been terminated. The Communication/Network screen is split up into four different tabs (Common, Ethernet, Serial, and PLC).

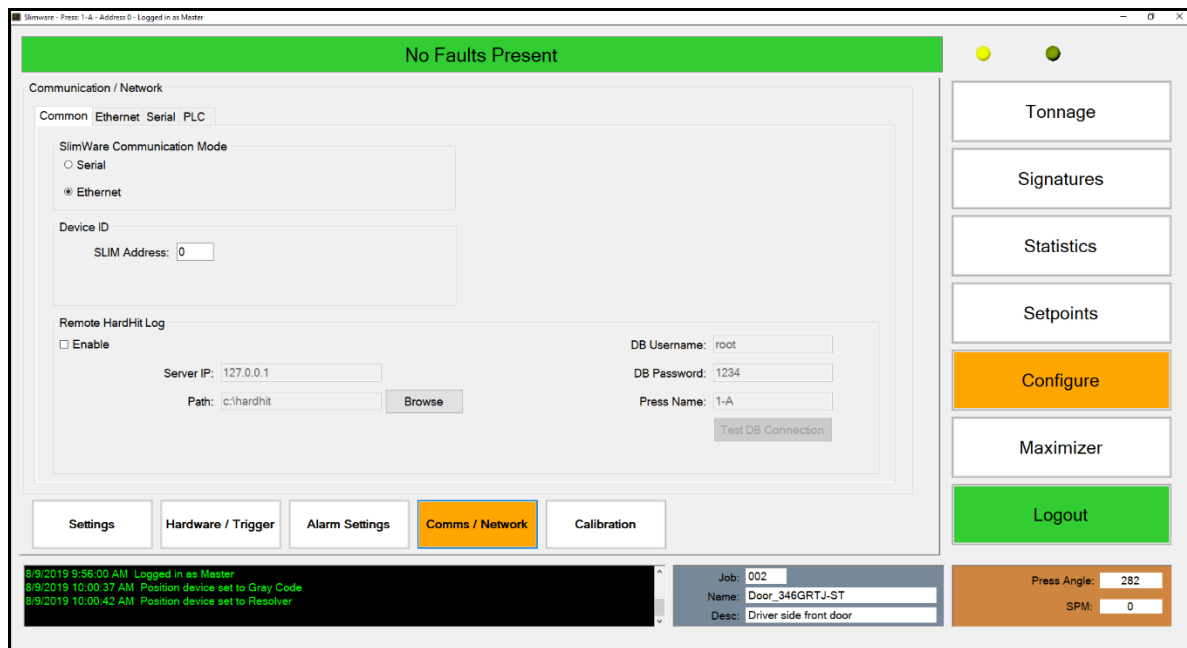


Figure 2-18: Configure Comms/Network - Common Screen

- **Common**
 - This tab contains settings that are common to Ethernet, Serial, and PLC communication.
 - **SlimWare Communication Mode** – Specifies the means by which SlimWare will communicate with the LS-ZT control module. Choose between Serial or Ethernet, depending on the connection. By default, the LS-ZT uses the Ethernet configuration. Typically, this should not be changed.
 - **Device ID**
 - **SLIM Address** – The SLIM Address is a unique number (0-31) assigned to each individual tonnage monitor when multiple units are installed on a PressNet plant-wide network. If not part of a PressNet network, leave this at 0.
 - **Remote HardHit Log** – This group contains the network settings for saving hard hits (over-tonnage) to a location on the network.
 - **Enable** – If checked, SlimWare will attempt to write any alarm values to the remote MySQL database and save hard-hit signatures (alarms) to the

remote PC. If the remote PC is unavailable, SlimWare will attempt to store the alarm information in a local database. Once the remote PC becomes available, the alarm data stored in the local PC will be transferred to the remote PC database.

- **Server IP** – The IP address of the remote PC.
- **Path** – The location on the remote PC where signatures will be stored.
- **DB Username** – The MySQL database username (Default: “root”).
- **DB Password** – The MySQL database password (Default; “1234”).
- **Press Name** – The name of the press. This is stored in the remote database and used for reporting purposes.
- **Test DB Connection** – This button can be used to verify the connection between SlimWare and the remote database. By clicking this button, SlimWare will attempt to connect to the remote database. A message box will appear indicating the connection status.



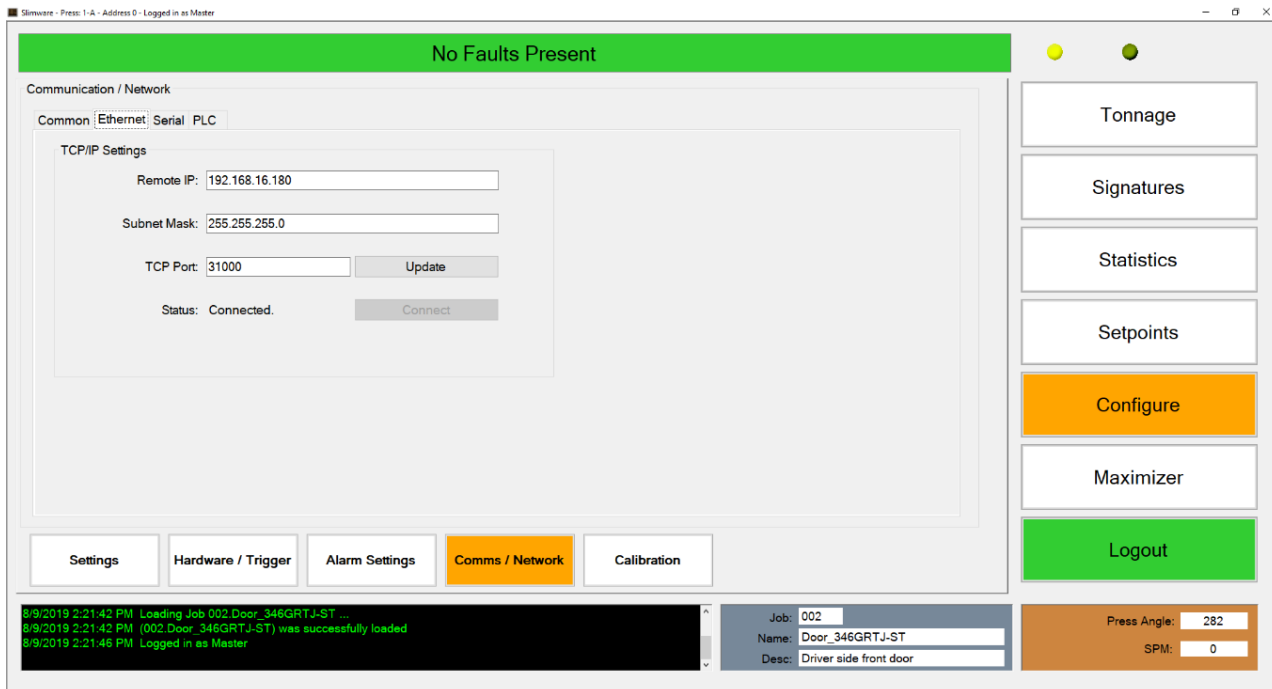


Figure 2-19: Configure Comms/Network - Ethernet Screen

- **Ethernet**
 - This tab contains Ethernet-related communication settings. These settings are only changeable when the SlimWare Communication Mode is set to Ethernet.
 - **TCP/IP Settings**
 - **Remote IP** – The IP Address of the LS-ZT control module. Default is 192.168.16.180
 - **Subnet Mask** – The subnet mask of the local network on which the SlimWare PC and the LS-ZT are connected. Default is 255.255.255.0
 - **TCP Port** – The unique port number of the TCP connection that the LS-ZT and SlimWare will share. Default is 31000.
 - **Status** – The current state of the TCP connection between SlimWare and the LS-ZT control module. Will be either “Connected” or “Disconnected”.
 - **Update** – Pressing this button will send the Remote IP Address, Subnet Mask, and TCP Port settings to the LS-ZT control module. Press the Update button after changing any of the above settings. After the settings are sent, the control module will reboot and SlimWare will display a message that it will need to restart to apply the settings. Wait for the control module to finish rebooting, then reopen SlimWare.

If the SlimWare communication method is set to Ethernet, and communication has been lost, follow these steps to establish communication with the LS-ZT control module.

- **Ethernet Communication Setup**
 - Verify that the Ethernet cable is connected between the Panel PC and the LS-ZT control module.
 - Go to the Configure → Comms/Network screen.
 - On the Common tab, make sure the Communication Mode is set to Ethernet.
 - On the Ethernet tab, enter the default IP address (192.168.16.180), subnet mask (255.255.255.0), and TCP port (31000).
 - Click the Update button.
 - If communications do not start, close SlimWare then restart it from the desktop shortcut.



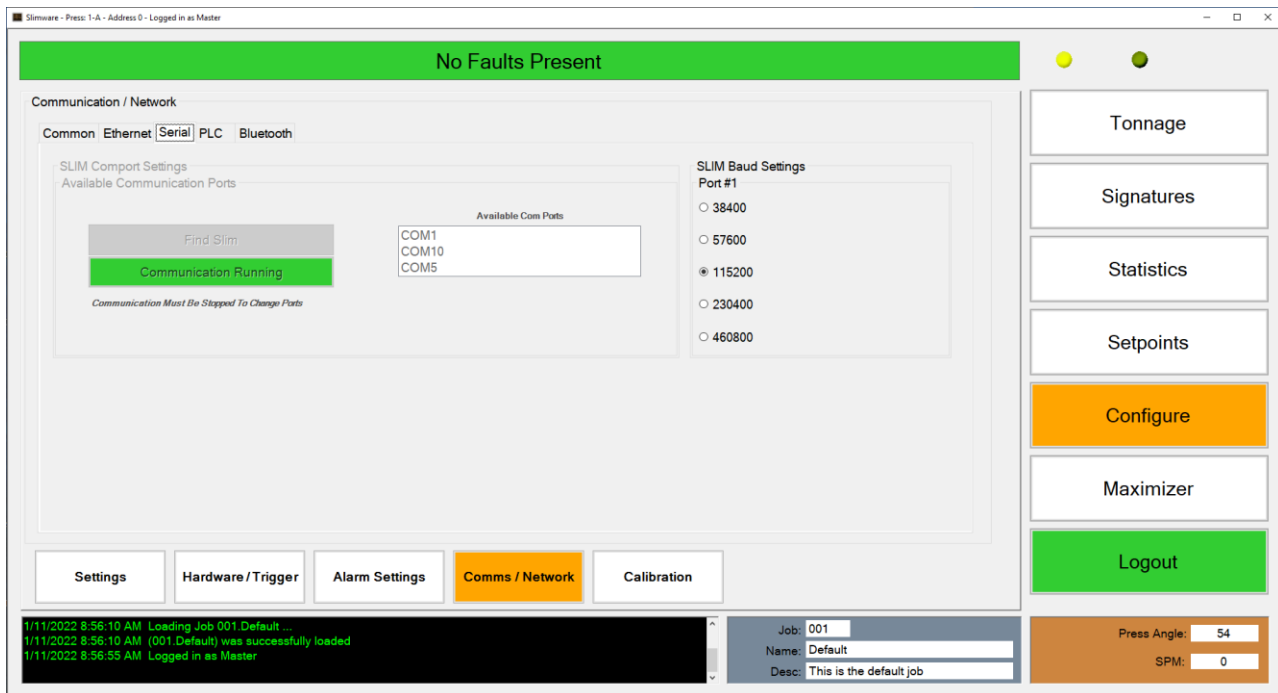


Figure 2-20: Configure Comms/Network - Serial Screen

- **Serial**
 - This tab contains Serial-related communication settings. Some settings are only changeable when the SlimWare Communication Mode is set to Serial.
 - **SLIM Comport Settings**
 - This section is only available when the Communication Mode is set to Serial.
 - **Find Slim** – Select this button if the com port, baud rate or address have been changed. *See more about this is the initial communication setup later in this section.*
 - **Available Com Ports** – Lists the available com ports on the PC.
 - **Communication Running / Idle** – Indicates whether communications have been established and whether communications are running. If the com port is open, this button will be green. If no com port is open, this button is yellow.
 - **SLIM Baud Settings/Port #1** – If the Communication Mode is set to Serial, this is the baud rate of the main communication port between the PC (SlimWare) and the control module. Select the correct baud rate for the control module. If the Communication Mode is set to Ethernet, this is the baud rate of the serial port between the LS-ZT control module and the remote device/communication software (i.e. the PressNet network). Select the correct baud rate for the remote device.

If the SlimWare communication method is set to Serial, and the serial communication has been lost, follow these steps to establish communication with the LS-ZT control module.

- **Serial Communication Setup**

- If communications are currently running, press the green “Communications Running” button. The button should turn yellow and the text will change to “Communication Not Running”.
- From the Available Com Ports list box, select the desired PC com port, then press the yellow “Communication Not Running” button. SlimWare will try to connect to the desired com port.
- If needed, change the baud rate and SLIM address to the desired values.
- If the baud rate and/or SLIM address is not known, press the Find Slim and wait while SlimWare searches for the proper settings.



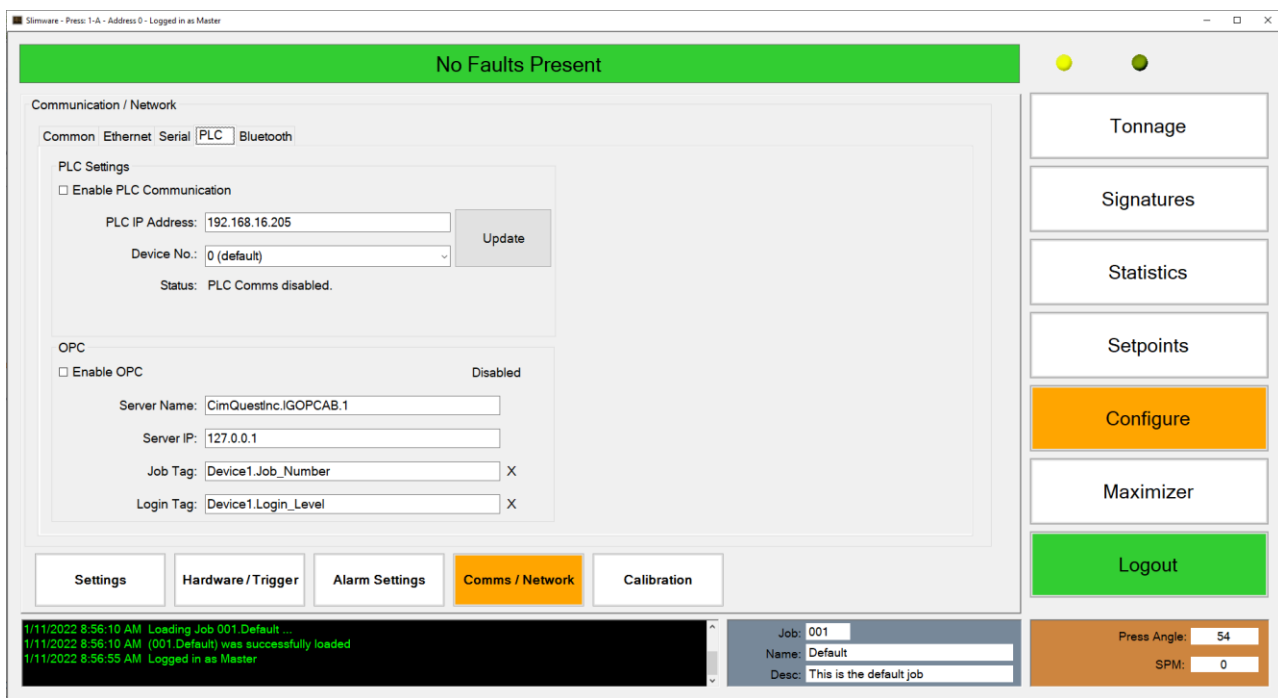


Figure 2-21: Configure Comms/Network - PLC Screen

- **PLC**
 - This tab contains PLC-related communication settings. Configure these settings when the LS-ZT will communicate directly to a PLC.
 - **PLC Settings**
 - **Enable PLC Communication** – Check this box to enable communications between the LS-ZT and the PLC located at the IP Address listed in the PLC IP Address field.
 - **PLC IP Address** – The IP address of the PLC with which the LS-ZT will communicate. The Enable PLC Communication checkbox must be unchecked before you can edit this.
 - **Device No.** – Configure the device number of the LS-ZT if the PLC is communicating to multiple units. If the PLC communicates with only this LS-ZT, this setting should remain at 0 (default).
 - **Update** – Press this button to send the PLC IP Address to the LS-ZT. The Enable PLC Communication checkbox must be unchecked before you can send the PLC IP Address to the LS-ZT.
 - **Status** – The current state of the PLC connection.
 - **OPC**
 - This group box contains the OPC server address and OPC client tag names used for job changes, bolster ID, etc.

- **Enable OPC** – If checked, SlimWare will attempt to read the OPC tags defined from the tag names and server address.
- **Server Name** – This is the OPC server name. By default, this is *CimQuestInc.IGOPCAB.1*
- **Server IP** – The IP address of the PC where the OPC server is located.
- **Job Tag** – The OPC client tag name. This value is defined by the job name/number tag in the PLC.
- **Login Tag** – The OPC client tag name. This value is defined by the login level tag in the PLC.



V. Calibration

This details the tonnage calibration for the LS-ZT unit. This should only be done by a trained Toledo Integrated Systems technician or someone else with tonnage monitor calibration knowledge.

Refer to the Calibration Procedure of this manual for further details.

****Warning: Improper calibration of the LS-ZT unit can result in physical damage to the press. Please contact Toledo Integrated Systems if you have any questions about the tonnage calibration procedure.**

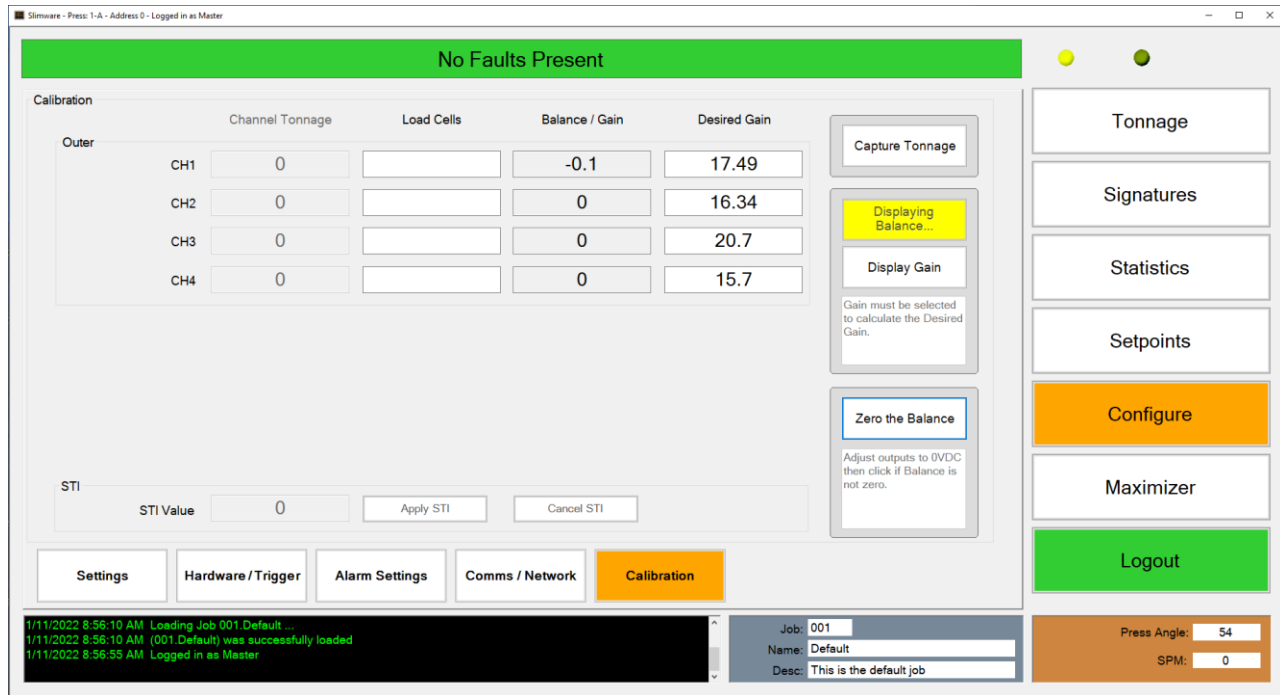


Figure 2-22: Configure Calibration Screen

- **Channel Tonnage** – Displays the current peak tonnage from the LS-ZT unit
- **Load Cells** – User input of the displayed tonnage from the calibration load cells (AutoCells). Available when displaying Gain values. Entering a Load Cell value will cause SlimWare to calculate a new Desired Gain value based on the current channel tonnage.
- **Balance/Gain** – Depending on the mode and stage of calibration, the monitor's balance (zero) or gain (shunt).
- **Desired Gain** – User input of the new desired gain values. Available when displaying Gain values. These are automatically calculated by entering load cell values.
- **Capture/Capturing Tonnage** – When the LS-ZT is ready to capture peak load tonnage values, this button will turn yellow and display the "Capturing Tonnage" message. When the balance or gain values are being displayed, pressing this button will exit calibration mode and the LS-ZT will be ready to capture peak load tonnage again.

- **Display/Displaying Balance** – Press this button to display the current sensor balance for each channel. After pressing this button, the values in the “Balance/Gain” fields show the sensor balance. This mode is used for calibration purposes. The monitor will not update its peak tonnage while it is displaying the balance.
- **Display/Displaying Gain** – Press this button to display the current gain for each channel. After pressing this button, the values in the “Balance/Gain” fields show the sensor gain. This mode is used for calibration purposes. The monitor will not update its peak tonnage while it is displaying the gain.
- **Zero the Balance** – When displaying the balance, this button zeroes the balance of the LS-ZT monitor’s channels. The balance should only be zeroed when the press is in the top position without any load on the sensors. ***This button does not balance the actual signal output voltage by the LS-ZT analog module.*** You should always adjust the balance pot of each channel on the analog module to read close to zero volts output. After this is done, you can use the Zero the Balance button to correct minor differences between the actual balance voltage and the balance readings as shown in SlimWare.
- **STI**
 - **STI Value** – User input for the desired STI value so that the LS-ZT can calculate the Inner Slide tonnage. Only available when in STI mode.
 - **Apply STI** – When entering the STI Value this button will send the desired value to the LS-ZT unit.
 - **Cancel STI** – When entering the STI Value this button will cancel the value the user has entered and return to the original value.



9. Job Settings

The job settings can be controlled through SlimWare itself or externally through INI (configuration) files. From SlimWare, users can add, edit or delete job setpoints. To access the job settings page, click anywhere in the job group box near the bottom of the screen (see Figure 2-4, point E). If the password is at or above the required level to access the job settings page, the screen in Figure 2-23 will load.

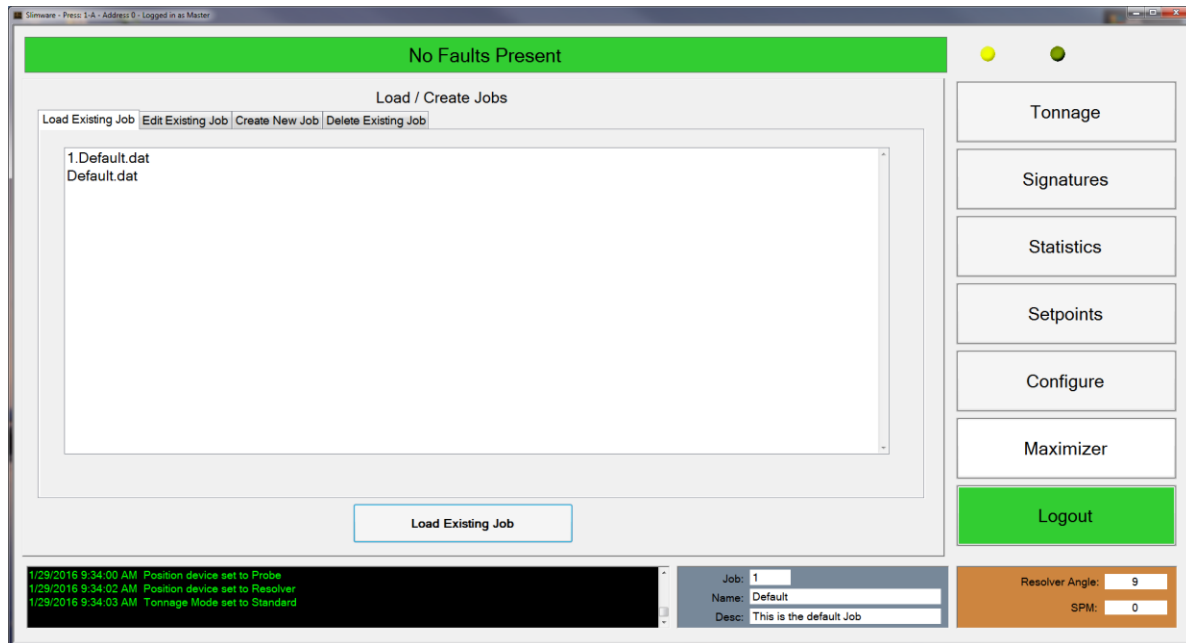


Figure 2-23: Load Existing Job Screen

I. Load Existing Job

- As mentioned above, SlimWare is able to manually or externally load a new job. If “External Job Data and Management” is checked on the configuration page, third party programs need to create an INI file in SlimWare’s external file directory and a new job will load.
- To load a new job manually, click on the desired job (the new job will become highlighted in the list), and select “Load Existing Job”. Notice the job number, name and description will update along with the historical text box.
- If the loaded job is new or has not yet been “learned”, a message will appear notifying the user that no available signature is available. Once the job has been successfully “learned”, a saved signature and folder will be created for the job. (To learn a job, simply select “Learn” from the tonnage page once the new job is loaded. This will automatically calculate setpoints based on 8 strokes.)



- The external job folder is located in the SlimWare data directory. Normally, this path is: C:\ProgramData\Toledo Integrated Systems\SlimWare 7\ExtData.
- To view the INI file structure type, view section 10 for all external file type structures.

II. Edit Existing Job

Setpoints (Outer) Env. (Outer)

Job Number: Job Name:

Job Description:

Tonnage Mode:

	Channel 0	Channel 1	Channel 2	Channel 3	Channel 4
HS	<input type="text"/>	<input type="text"/>	<input type="text"/>	<input type="text"/>	<input type="text"/>
LS	<input type="text"/>	<input type="text"/>	<input type="text"/>	<input type="text"/>	<input type="text"/>
H%	<input type="text"/>	<input type="text"/>	<input type="text"/>	<input type="text"/>	<input type="text"/>
L%	<input type="text"/>	<input type="text"/>	<input type="text"/>	<input type="text"/>	<input type="text"/>
BH	<input type="text"/>	<input type="text"/>	<input type="text"/>	<input type="text"/>	<input type="text"/>
RS	<input type="text"/>	<input type="text"/>	<input type="text"/>	<input type="text"/>	<input type="text"/>

Save Job Settings

Figure 2-24: Edit Existing Job Screen

- SlimWare allows for users to edit job parameters while the job is not loaded. By selected the “Edit Existing Job” tab, a list of all previously saved jobs (excluding the currently loaded job) will appear. Click on the desired job and the setpoints (standard and enveloping) will load.
- Edit any of the job parameters and select “Save Job Settings”. This will save the setpoints to the desired job. The changes will be reflected next time the job loads.

III. Create New Job

- To create a new job, select the "Create New Job" tab. The window below will load.

The screenshot shows a software interface for creating a new job. At the top, there are four tabs: "Load Existing Job", "Edit Existing Job", "Create New Job", and "Delete Existing Job". The "Create New Job" tab is selected. Below the tabs, there are three input fields: "Job Number:" with a text box containing "000", "Job Name:" with an empty text box, and "Job Description:" with an empty text box.

Figure 2-25: Create New Job Screen

- Enter the desired job number, job name and description for the new job and select "Create New Job". Note: The job number can be a max of three digits and the job name must start with a non-numeric value.
- The newly created job is not loaded, just created. It is created with the current setpoints that are stored in the LS-ZT control module (the current job loaded). To load the new job, select the "Load Existing Job" tab. The recently created job will be listed. Click on the new job and select "Load Existing Job". The new job will be loaded.
- If the setpoints of the currently loaded job are not suitable, once created, follow the steps in the section above for editing an existing job.

IV. Delete Existing Job

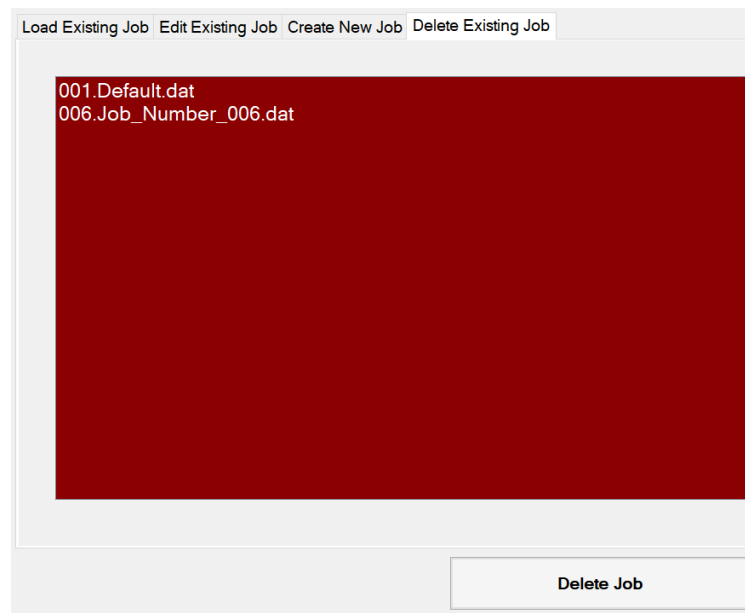


Figure 2-26: Delete Existing Job Screen

- To remove an existing job, select the “Delete Existing Job” tab and highlight the job that is to be removed. Once highlighted, select “Delete Job”. A message box will appear asking for confirmation; select “Yes” to permanently remove the job from SlimWare.

10. External Configuration Files

There are two (2) configuration files that control job, login and setpoint features. These two configuration files are named **Ext_Job.ini** and **Slimware_Stat.ini**. These files are to be written to the following location:

C:\ProgramData\Toledo Integrated Systems\SlimWare 7\ExtData

The above path reflects the default installation path. If this path was changed during SlimWare installation, the path will reflect these changes.

I. Ext_Job.ini

- Ext_Job.ini controls all features related to job changes. A sample Ext_Job.ini is shown below in Figure 2-27.

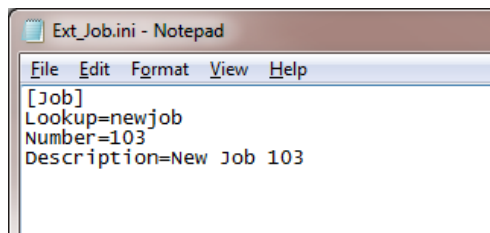
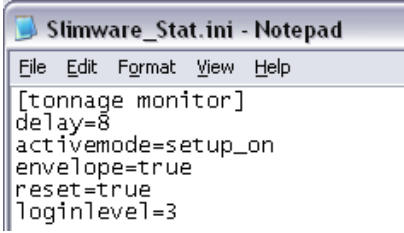


Figure 2-27: Ext_Job.ini File

- **[Job]** – This is a static value and cannot be changed. When writing the Ext_Job.ini, this value must be included.
- **Lookup** – This is the value that SlimWare will use to lookup or create the job. The Lookup value is the Job Name and must start with a non-numeric value.
- **Number** – SlimWare will also use this value to lookup or create the job. The Number value is the Job Number. This must be a numeric value and a max of three digits.
- **Description** – This value is only used to give a better description of the job and is not used to lookup or create a job.
- In Figure 2-27, SlimWare is searching for the job with the name of “newjob” and a number of “103”. If this job can be found, the job and corresponding setpoints will be loaded. If “103.newjob” is not found, the job will be created with the current setpoints and the user will be alerted that the job could not be found (in the historical data window).

II. Slimware_Stat.ini

- Slimware_Stat.ini controls all features related to setpoints, login and other functions with the LS-ZT.



```

Slimware_Stat.ini - Notepad
File Edit Format View Help
[tonnage monitor]
delay=8
activemode=setup_on
envelope=true
reset=true
loginlevel=3

```

Figure 2-28: Slimware_Stat.ini File

For all items defined below, only one variable is required when writing the Slimware_Stat.ini. For example, to reset the monitor, only the reset command needs to be sent. The delay, activemode, envelope and loginlevel are not required to be written along with the reset command.

- **[tonnage monitor]** - This is a static value and cannot be changed. When writing the Slimware_Stat.ini, this value must be included.
- **Delay** – This value is used in conjunction with the activemode feature (described below). When the delay value is set, the monitor will remain in setup mode for the declared amount of cycles before switching to learn mode. In Figure 2-28, the monitor will remain in setup mode of eight (8) cycles before automatically moving to learn mode.
- **Activemode** – There are four possible declarations for this variable:
 - setup_on: This will place the monitor in setup mode.
 - setup_off: This will take the monitor out of the setup mode.
 - learn_on: This will place the monitor into learn mode.
 - learn_off: This will take the monitor out of the learn mode.

Activemode is optional and is only required when the delay value is declared.

- **Envelope** – By setting this value to “true”, the monitor will enable enveloping mode. Enveloping is disabled by writing a “false” to this variable.
- **Reset** – The only value that can be written to this variable is “true”. By writing “true”, the monitor will issue the reset command to reset any alarms.

- **Loginlevel** – By writing a “3”, “2”, “1” or “0”, users can be logged in or out. Below are the login levels and equivalent values:
 - Master: “3”
 - Setup: “2”
 - Operator: “1”
 - Log Out: “0”

11. Live Data Output Feature

The Live Data Output feature provides a means for SlimWare to communicate the current peak load values and alarm status to external applications. This is accomplished via a Comma-Separated-Value (CSV) file, named "livedata.csv" that can be opened and read at any time. The file is written to the following location:

C:\ProgramData\Toledo Integrated Systems\SlimWare 7\ExtData

To enable this feature, check the External Job and Data Management option on the Configure>>Settings>>User Preferences screen.

I. File format of the "livedata.csv" file

- The "livedata.csv" file contains the most current peak load values for each channel as well as their corresponding alarm status. A sample file is shown below in Figure 2-29.

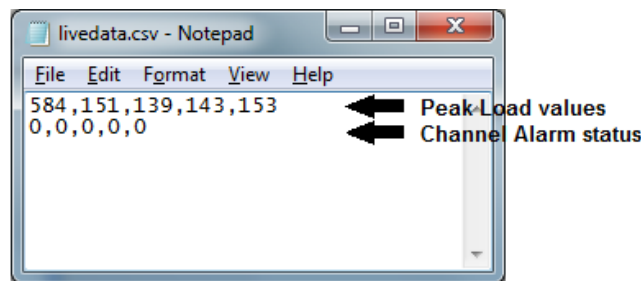


Figure 2-29: livedata.csv File

- The file format for a 4-channel LS-ZT is as follows:

```
<CH0 load>,<CH1 load>,<CH2 load>,<CH3 load>,<CH4 load><CR><LF>
<CH0 status>,<CH1 status>,<CH2 status>,<CH3 status>,<CH4 status>
```

where CH0 corresponds to the total, CH1 corresponds to channel 1, etc.

- Each peak load value is separated by a comma. Each channel alarm status is separated by a comma. The new-line characters (ASCII <CR> <LF>) separate the peak load values and the channel alarm statuses.
- The peak load values are stored in standard ASCII format, including decimal points (when applicable).

- The channel alarm status values are stored in standard ASCII format. The status is represented by a decimal number (0-7), which equates to the following alarm types:
 - 0 = No alarm
 - 1 = Capacity alarm
 - 2 = CCM alarm
 - 3 = High Setpoint alarm
 - 4 = Low Setpoint alarm
 - 5 = Reverse alarm
 - 6 = High Enveloping alarm
 - 7 = Low Enveloping alarm

- Note that only enabled channels are written to the file.
2-channel units will only include CH0, CH1, and CH2 load values and statuses.
8-channel units will include CH0, CH1, CH2, CH3, CH4, CH5, CH6, CH7, CH8, and CH9 load values and statuses.

II. Reading the “livedata.csv” file

- Any application that accesses the “livedata.csv” file must follow this sequence:
 - Open the file.
 - Read the contents.
 - Close the file.
- SlimWare will not be able to update the file if it remains opened.
- SlimWare updates the “livedata.csv” every 1 second. Any application that reads this file should not attempt to read it more frequently than this interval.
- The “livedata.csv” was designed to be read a line at a time.
The first line read will return the load values, starting at CH0 (the total) and ending with the highest configured channel, with a comma separating each value.
The second line read will return the channel alarm statuses, starting at CH0 (the total) and ending with the highest configured channel, with a comma separating each value.



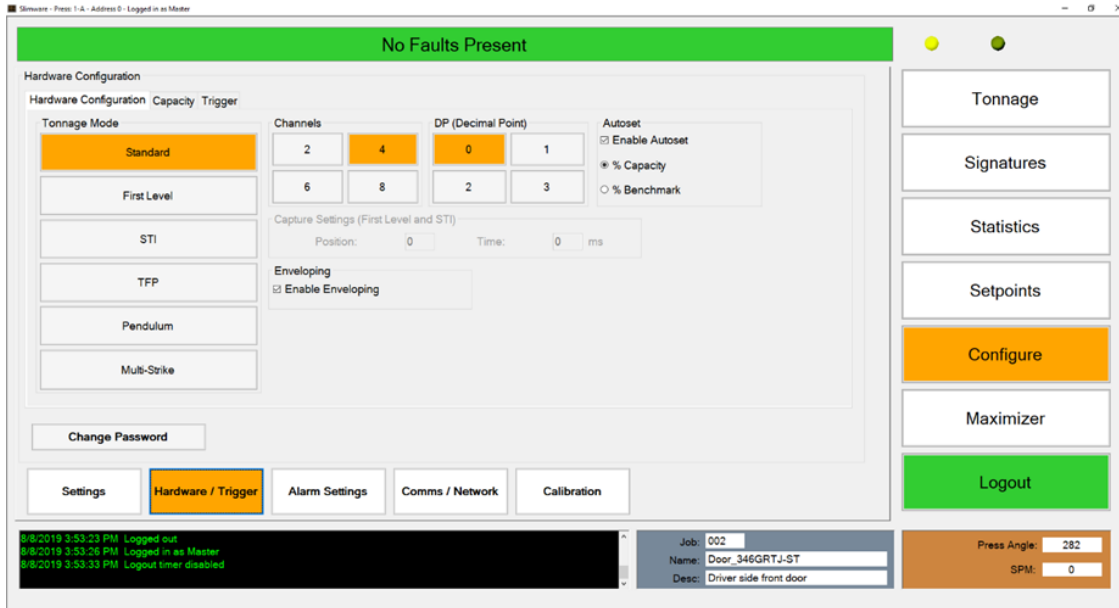
➤ Calibration Procedure



In order for the LS-ZT to display accurate tonnage information, the unit must be properly calibrated. Calibration is performed by using SlimWare and the Analog module (see above) which is located inside the LS-ZT enclosure.

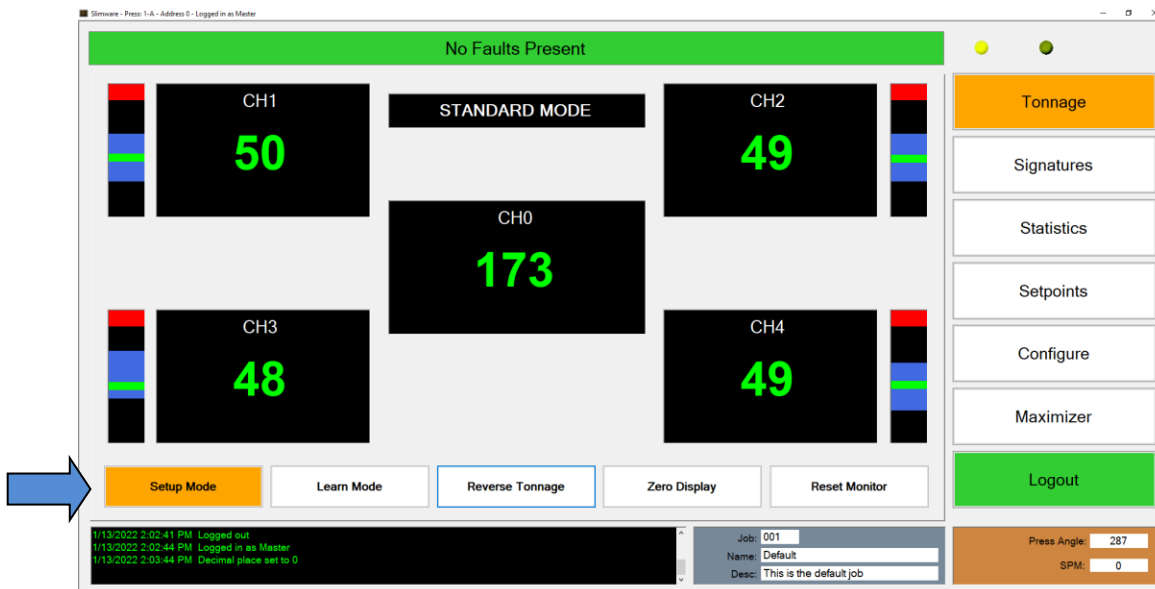
Note: If calibrating an 8-Channel unit, there will be two Analog modules - one for CH1-4 and one for CH6-9.

- 1) **Login to SlimWare. Default password is “m”.**
- 2) **Go to the Configure → Hardware/Trigger page.**
 - a) Select options similar to the following figure.



- b) Enter the press capacity on the Capacity tab.
- c) Choose the appropriate trigger method on the Trigger tab. If using resolver or encoder for triggering, set the offset so that the resolver angle matches the press angle.

3) Enable “Setup Mode” to bypass the high and low limits.



4) Find the shut height of the press.

- a) Jog the press until the ram is at bottom dead center (BDC) or 180° without any load cells or die in the press.

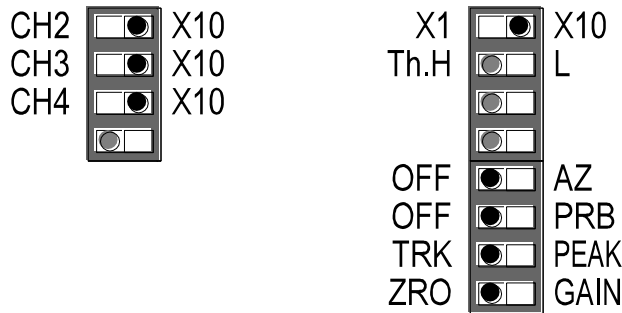
- b) Determine the amount of spacers needed with your load cells. Cycle the press without load cells to ensure correct height.

5) Place the load cells in the correct position in the press.

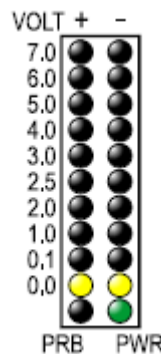
- a) All load cells should be equal distance from the sides and front and rear. For example, 12" from the sides, 10" from the front and rear. Load cells are typically placed at each corner of the press's bed.
- b) Cycle the press without hitting the load cells first.
- c) Place cardboard on the top and bottom of the load cells.

6) Balance the tonnage sensors.

- a) Make sure the press is under no load.
- b) Set the Analog module dip switches as shown. Set all gain pots to fully clockwise, then dial each gain pot about 12 turns counterclockwise to start.

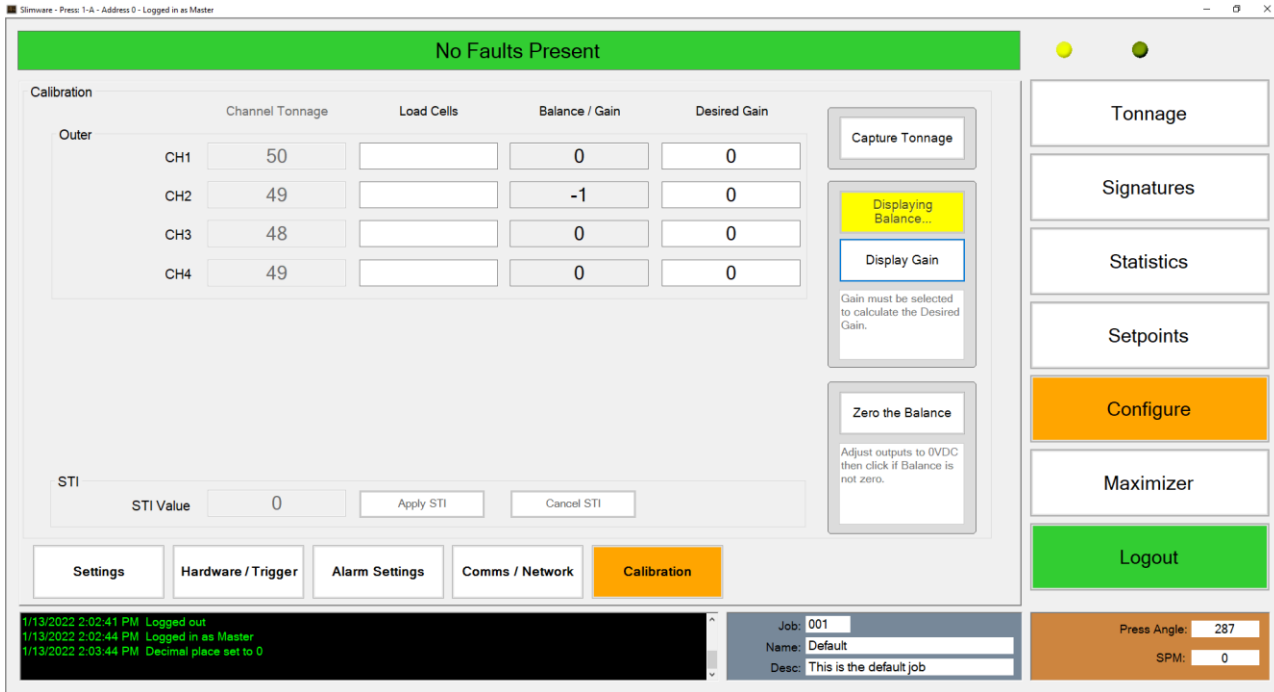


- c) On the Analog module, set the Display channel selector to **1** for Channel 1. The Bar-graph voltmeter now shows the balance of Channel 1.
- d) Adjust the Channel 1 ZERO pot until the bar-graph has only the 2 yellow **0.0V** LEDs lit. This indicates a balanced or zeroed state.



- e) Repeat steps c) and d) for Channels 2, 3, and 4.

- f) Go to SlimWare's Configure → Calibration page (see figure below).
- g) Push the "Display Balance" button.
- h) The Balance/Gain fields should be close to zero. If not, push the "Zero the Balance" button. The "Balance/Gain" column should become all zeroes.
- i) If calibrating an 8-Channel unit, repeat step 6 with the 2nd Analog module for CH6-9.



7) Cycle the press.

- a) Press the "Capture Tonnage" button in SlimWare.
- b) Further adjust the shut height so that the press impacts the load cells and generates a load at 100% of press capacity. See the following warning.

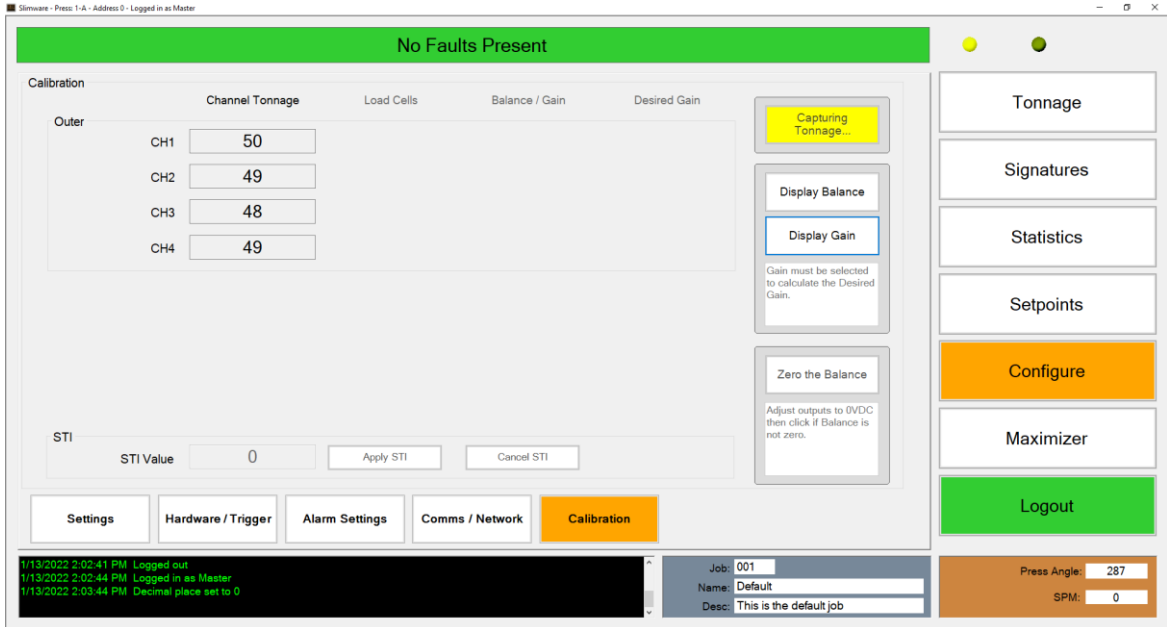
WARNING:

Depending on the press capacity and the size of the load cells being used, loading the press at capacity with load cells could indent the ram or bolster. To prevent this situation from happening, do one of the following:

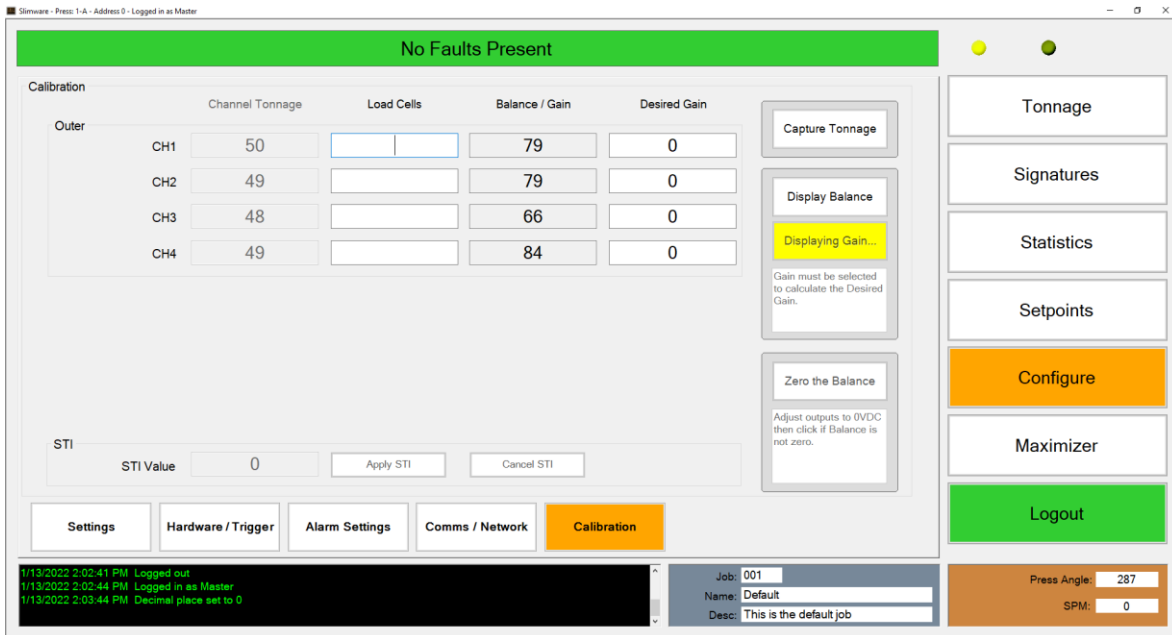
- Calibrate the press only up to 80% of capacity, or
- Use larger load cells to increase the loading surface. For instance, to calibrate a 400 Ton press at capacity, use (4) 250 Ton load cells instead of (4) 100 Ton load cells.

8) Adjust the gain.

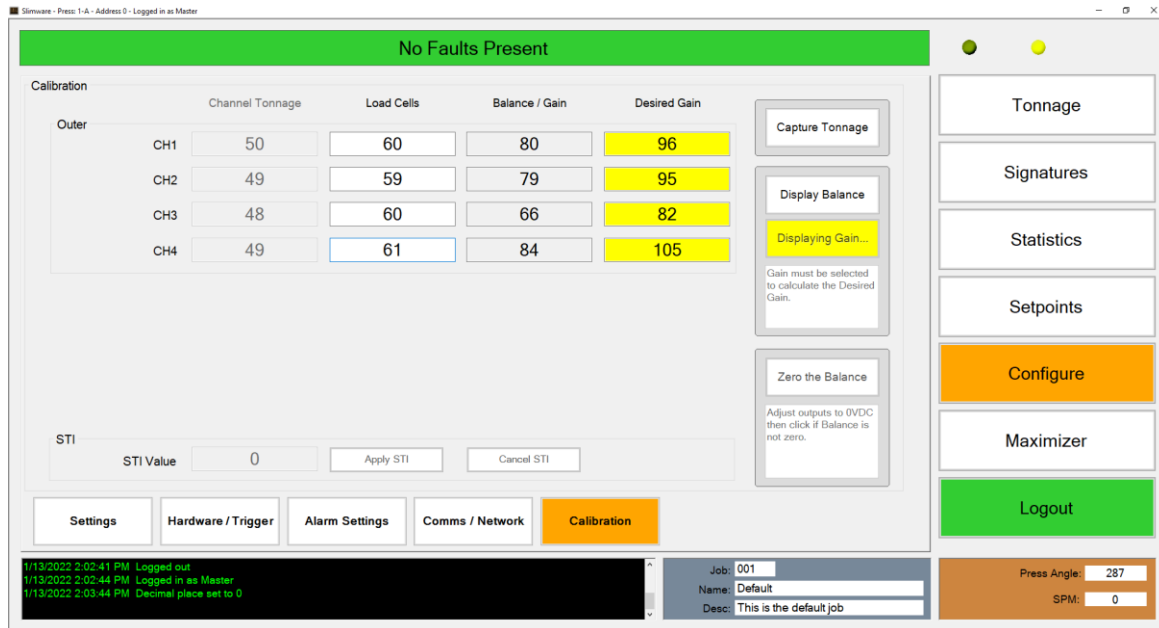
- a) Cycle the press a few times.
- b) The peak tonnage is shown in the “Channel Tonnage” column.



- c) Push the “Display Gain” button. The gain values are shown in the “Balance/Gain” column.



d) Enter the load cell values in the “Load Cells” column.



- e) If the values in the “Load Cells” column match the values in the “Channel Tonnage” column, the Analog module is already set to the correct gain. You can now skip to Step 9.
- f) Adjust the Gain pot for each channel until its Gain value matches the value in the “Desired Gain” column. If less gain is needed, change the channel’s Gain switch to X1.
- g) Press the “Capture Tonnage” button.
- h) Cycle the press. The values in the “Channel Tonnage” column should match the values on the load cells. If not, repeat from step 8 a).

9) Record Gain Numbers.


- a) The values in the “Desired Gain” column are the Gain Numbers. Record these gain numbers (instead of, or in addition to, the DC voltage gain) on the calibration card located on the side of the Analog module. Refer to the figure below.

Model ZT-4		Serial No. <u> A1501 </u>		
Calibrated By: <u> John Doe </u>		Date: <u> 1-1-2015 </u>		
Channel Number	Gain Range Switches	Gain (DC Volts)	Sensor Location	Mode Switch (Fill In Switch Position)
1	x1 <input type="checkbox"/> x10 <input checked="" type="checkbox"/>	151	LR	<div style="display: flex; flex-direction: column; align-items: center;"> <div style="display: flex; align-items: center; margin-bottom: 5px;"> <div style="width: 15px; height: 15px; border: 1px solid black; background-color: #ccc; margin-right: 5px;"></div> Th.H </div> <div style="display: flex; align-items: center; margin-bottom: 5px;"> <div style="width: 15px; height: 15px; border: 1px solid black; background-color: #ccc; margin-right: 5px;"></div> L </div> <div style="display: flex; align-items: center; margin-bottom: 5px;"> <div style="width: 15px; height: 15px; border: 1px solid black; background-color: #ccc; margin-right: 5px;"></div> AZ </div> <div style="display: flex; align-items: center; margin-bottom: 5px;"> <div style="width: 15px; height: 15px; border: 1px solid black; background-color: #ccc; margin-right: 5px;"></div> PRB </div> <div style="display: flex; align-items: center; margin-bottom: 5px;"> <div style="width: 15px; height: 15px; border: 1px solid black; background-color: #ccc; margin-right: 5px;"></div> PEAK </div> <div style="display: flex; align-items: center;"> <div style="width: 15px; height: 15px; border: 1px solid black; background-color: #ccc; margin-right: 5px;"></div> GAIN </div> </div>
2	x1 <input type="checkbox"/> x10 <input checked="" type="checkbox"/>	160	RR	
3	x1 <input type="checkbox"/> x10 <input checked="" type="checkbox"/>	114	LF	
4	x1 <input type="checkbox"/> x10 <input checked="" type="checkbox"/>	138	RF	
Toledo Integrated Systems Toledo Transducers, Inc.		Holland, OH	Made in the USA	

Sensor Signal Configuration (Fill In Switch Position)			
Sensor 1	Sensor 2	Sensor 3	Sensor 4
V / C <input type="checkbox"/> Lg / Sm <input type="checkbox"/> FIL ▶ <input type="checkbox"/>	V / C <input type="checkbox"/> Lg / Sm <input type="checkbox"/> FIL ▶ <input type="checkbox"/>	V / C <input type="checkbox"/> Lg / Sm <input type="checkbox"/> FIL ▶ <input type="checkbox"/>	V / C <input type="checkbox"/> Lg / Sm <input type="checkbox"/> FIL ▶ <input type="checkbox"/>
Shunt: _____ Ohm (if EXT used)	Notes:		

10) Document the LS-ZT Settings.

- a) Fill out all applicable settings including Press No., resolver dip switch configuration, capacities, and trigger method on the calibration card located on the side of the Control module. See the example below.

Model ZTSLM		Serial No. <u> A1502 </u>	
Setup By: <u> John Doe </u>		Date: <u> 1-1-2015 </u>	
Press No. <u> 3-2 </u>		Resolver Switch (Fill In Switch Position)	
IP Addr. <u> 192.168.16.180 </u>			
Capacities			
CH0: <u> 400 </u>	CH5: _____		
 Toledo Integrated Systems Toledo Transducers, Inc.		Holland, OH	Made in the USA
		<input checked="" type="checkbox"/> SLA <input type="checkbox"/> SLA <input type="checkbox"/> ROT <input type="checkbox"/> ST1 <input type="checkbox"/> ST2	<input type="checkbox"/> MTR <input type="checkbox"/> MTR <input type="checkbox"/> X2 <input type="checkbox"/> X2 <input type="checkbox"/> X2
		<input checked="" type="radio"/> Master <input type="radio"/> Slave	

Trigger Method (Mark only one)				
<input type="radio"/> Threshold	<input checked="" type="radio"/> Resolver	<input type="radio"/> Encoder	<input type="radio"/> Probe	<input type="radio"/> Gray Code
Value: _____	Offset: <u> 158 </u>			
Notes:				

11) Make linearity check.

- a) Go to the Tonnage page (see figure below).
- b) Raise the shut height in .020 to .030 inch increments to decrease tonnage.
- c) Cycle the press and impact the load cells.
- d) Compare the tonnage applied to the load cells to the tonnage displayed on the LS-ZT. Record these data on the Calibration Sheet (Form #1224) provided at the end of this procedure.

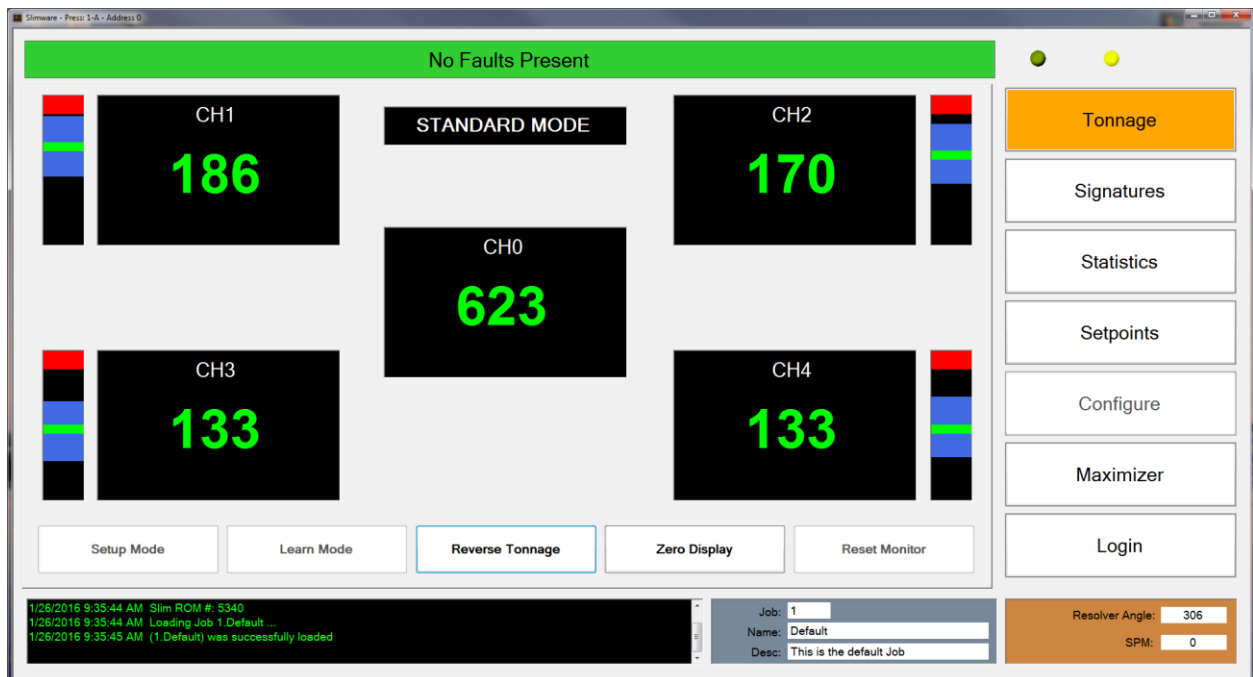


12) Calibration complete.

The calibration procedure is now complete. Contact Toledo Integrated Systems' Service Department for assistance if needed. Our Service Department can be reached at 419-867-4170, Monday through Friday, 8:00AM to 5:00PM.

**THIS PAGE
INTENTIONALLY
LEFT BLANK**

➤ Operator's Guide



- The LS-ZT tonnage monitor reads the force generated as a stamping press produces parts. By comparing this force to a known, good benchmark tonnage, the LS-ZT can generate high and low limits (setpoints) and check the force from each stroke to ensure that it falls within this acceptable range. The LS-ZT can generate alarms and stop the press when the tonnage gets too high or too low, which protects the quality of the parts produced, as well as protecting the press and die from dangerous over-capacity tonnage.
- When setting a new die in the press, place the LS-ZT into Setup Mode by pressing the **Setup Mode** button on the Tonnage screen. Run material through the press until a good part is formed, then place the LS-ZT into Learn Mode by pressing the **Learn Mode** button. After 8 strokes, the LS-ZT establishes a new benchmark and calculates new high and low setpoints based on the percentage settings from the Setpoints screen.
- If the LS-ZT is not configured to automatically generate high and low setpoints, the setpoints can be manually entered on the Setpoints screen.
- Once a benchmark and setpoints have been established for a particular die, all settings can be saved in a job file by pressing the grey Job box at the bottom of the screen. Select the **Create New Job** tab, enter a unique job number, name, and description and press the **Create New Job** button to save.
- To load a job file for a previously run die, simply press the grey Job box at the bottom of the screen, select the job file that you want to load, and press the **Load Existing Job** button. All stored setpoints will be recalled and loaded.
- When an alarm occurs, the shutdown relay opens to stop the press and the status bar at the top of the screen will flash red and display a message to indicate the type of alarm. In the case of tonnage alarms, the faulted channel(s) on the Tonnage screen will also flash red to indicate the location of the problem. To reset the alarm, first correct the situation that caused the alarm, then press the red flashing status bar, the faulted corner, or the **Reset Monitor** button to clear the alarm and close the shutdown relay.
- To avoid nuisance alarms and shutdowns while adjusting the press, put the LS-ZT in Setup Mode. The press will still be protected from an over-capacity hit, but high and low setpoint violations will be ignored.



**THIS PAGE
INTENTIONALLY
LEFT BLANK**

Appendix

- A) Sensor Installation (Doc# 11080)
- B) Calibration Sheets (2) (Form# 1224)

THIS PAGE
INTENTIONALLY
LEFT BLANK