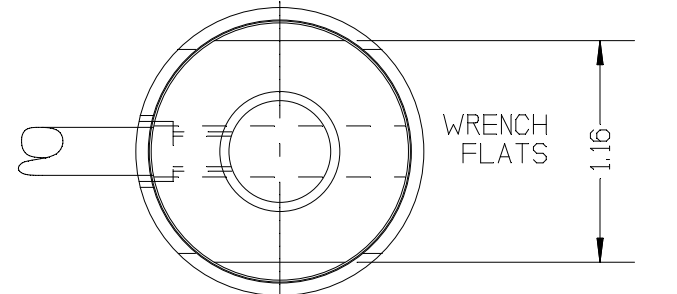


| REV | DATE     | DESCRIPTION                  | ECO | SIGN |
|-----|----------|------------------------------|-----|------|
| 1   | 11/21/96 | RELEASE FOR QUOTING PURPOSES | 437 | RAB  |

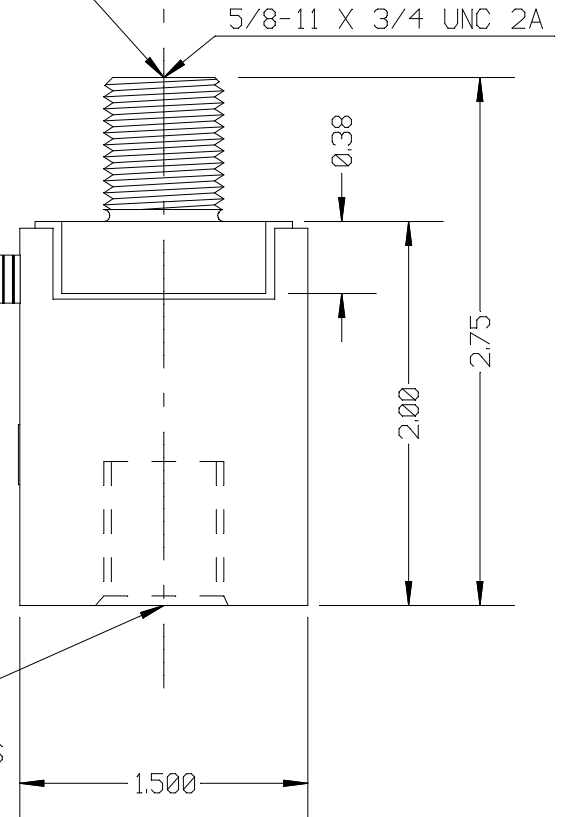
WIRE COLOR CODE:

+ EXCITATION GREEN  
 - EXCITATION BLACK  
 + SIGNAL WHITE  
 - SIGNAL RED  
 SHIELD 1 OHM TO ELEMENT\*  
 \*(DYNAMIC LOAD CELL USED WITH  
 T.T.I. PRODUCTION / LOAD MONITOR.)



INSTALLATION TORQUE SHOULD NOT EXCEED 1,050 IN-LB ON THIS END OF LOAD CELL

5 FEET STAINLESS STEEL METAL FLEX. HOSE  
 6 FEET OF SENSOR CABLE. TTI NO.2043  
 OPTIONAL LEMO ØB PLUG CONNECTOR\*  
 (NOT SHOWN)



SPECIFICATIONS:

RATED CAPACITY 20,000 POUNDS  
 RATED OUTPUT 2 mV/V typical  
 COMBINED ERROR 0.25 %  
 NON-REPEATABILITY 0.05 %  
 ZERO BALANCE ± 1 %  
 TEMPERATURE RANGE, COMPENSATED +14 TO 104° F  
 TEMPERATURE EFFECT, OUTPUT 0.014 % / ° F  
 TEMPERATURE EFFECT, ZERO BALANCE 0.05 % / ° F  
 INPUT IMPEDANCE 350 OHMS, typical  
 EXCITATION VOLTAGE (typical) 10 VDC or VAC rms  
 EXCITATION VOLTAGE, MAXIMUM 15 VDC or VAC rms  
 INSULATION RESISTANCE 5,000 MEG OHMS @ 50 VDC  
 MAXIMUM LOAD, SAFE 150 % F.S.  
 MAXIMUM LOAD, ULTIMATE 300 % F.S.

5/8-11 X 3/4 UNC 2B  
 TOOL TORQUE SHOULD NOT EXCEED 1,050 IN-LB ON THIS END OF LOAD CELL

TOLERANCES UNLESS OTHERWISE SPECIFIED:

XXX = ± 0.005  
 XX = ± 0.015  
 X = ± 0.025

SCALE: FULL

FINISH: FINE BRUSHED FINISH, O.D. NO MARKS

MAT'L: ALLOY STEEL / STAINLESS STEEL



TOLEDO  
 TRANSDUCERS,  
 INC.

Designed By: Mettert

Date: 11/15/96

Drawn By:

Date:

Approved By:

Date:

Title / Description:  
 INSERTION LOAD CELL  
 SPECIFICATIONS

Dwg. Size: A  
 Dwg. Type: SPEC

Page 1 of 1

Part No. SS1122-20K

File Name 10160SP.FCD

Doc. No. 10160